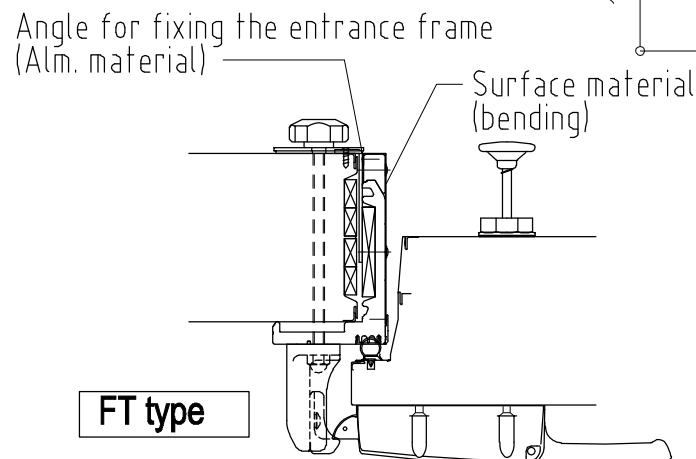
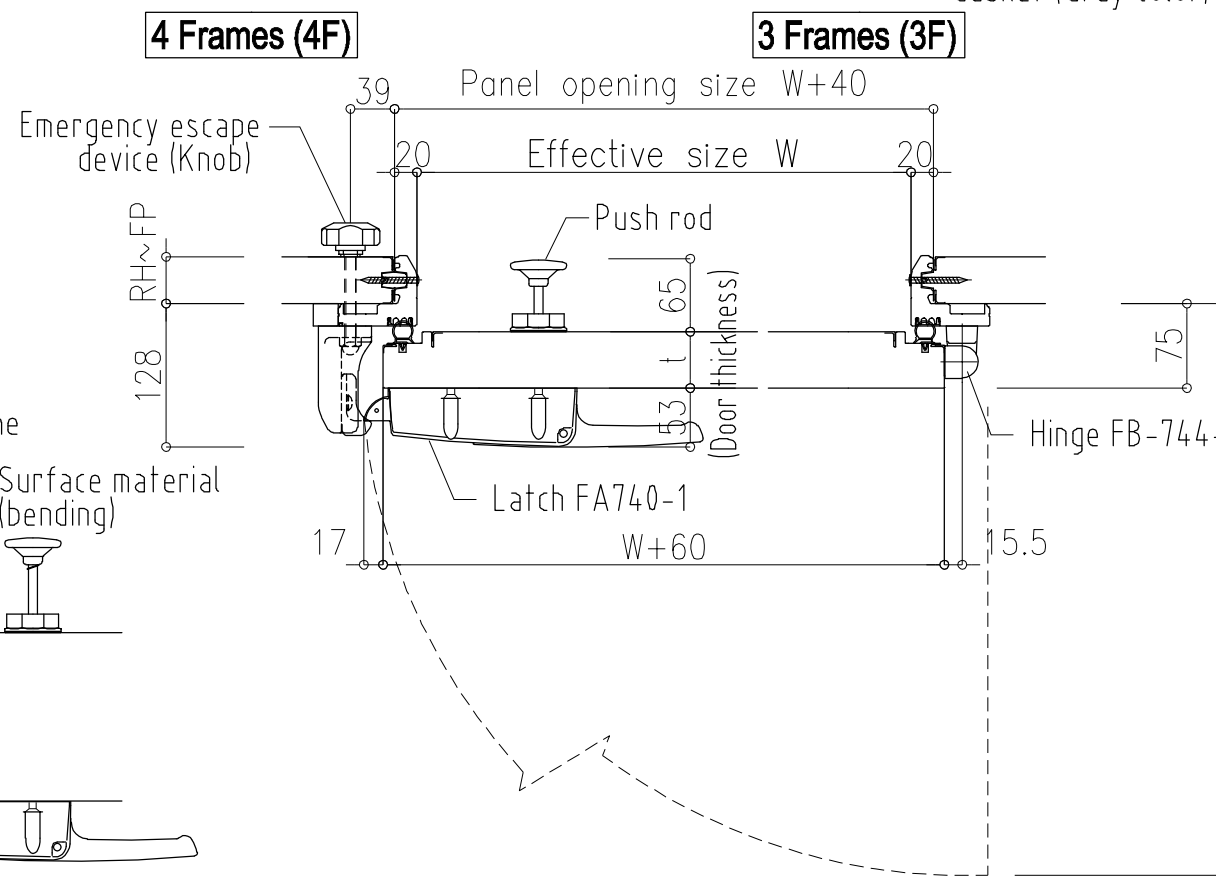
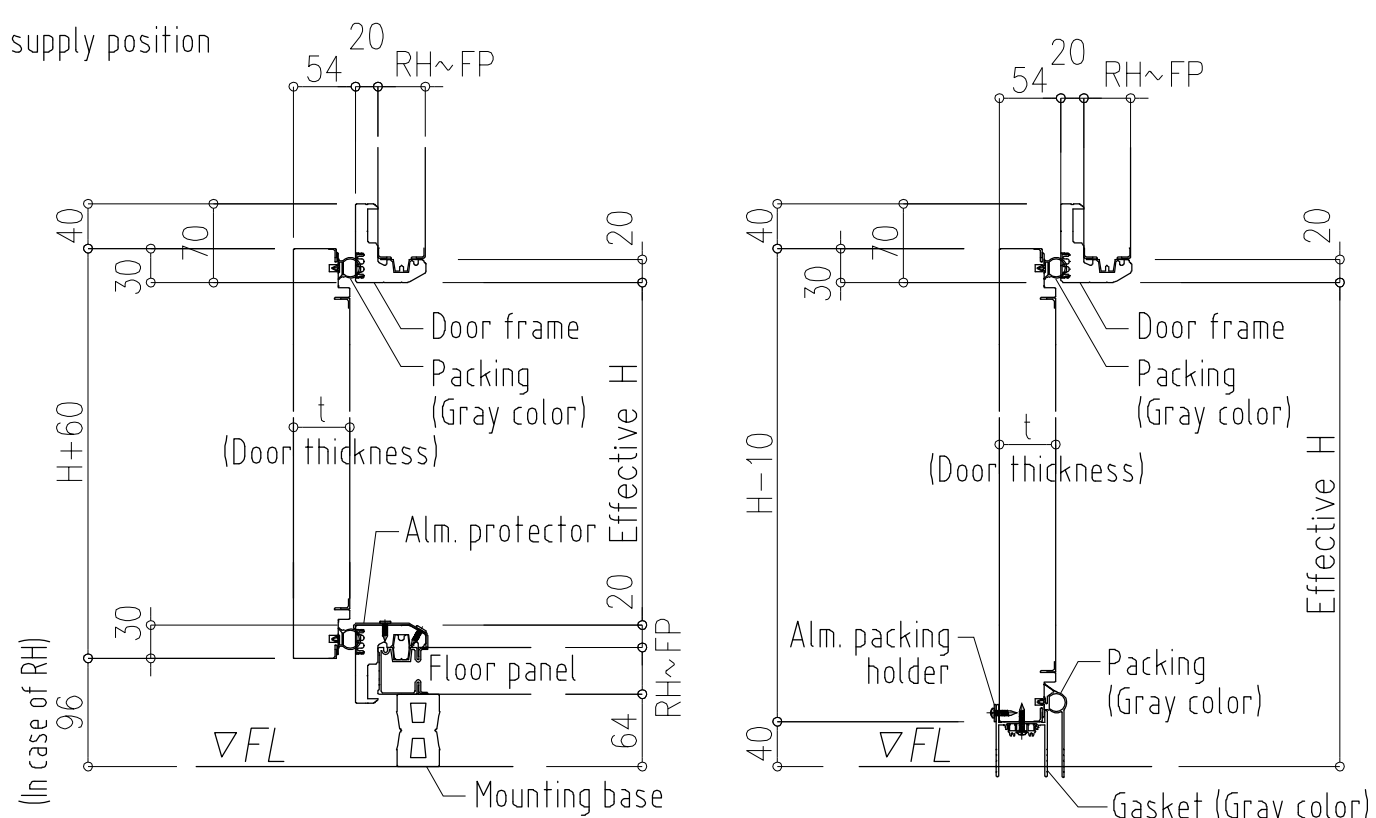
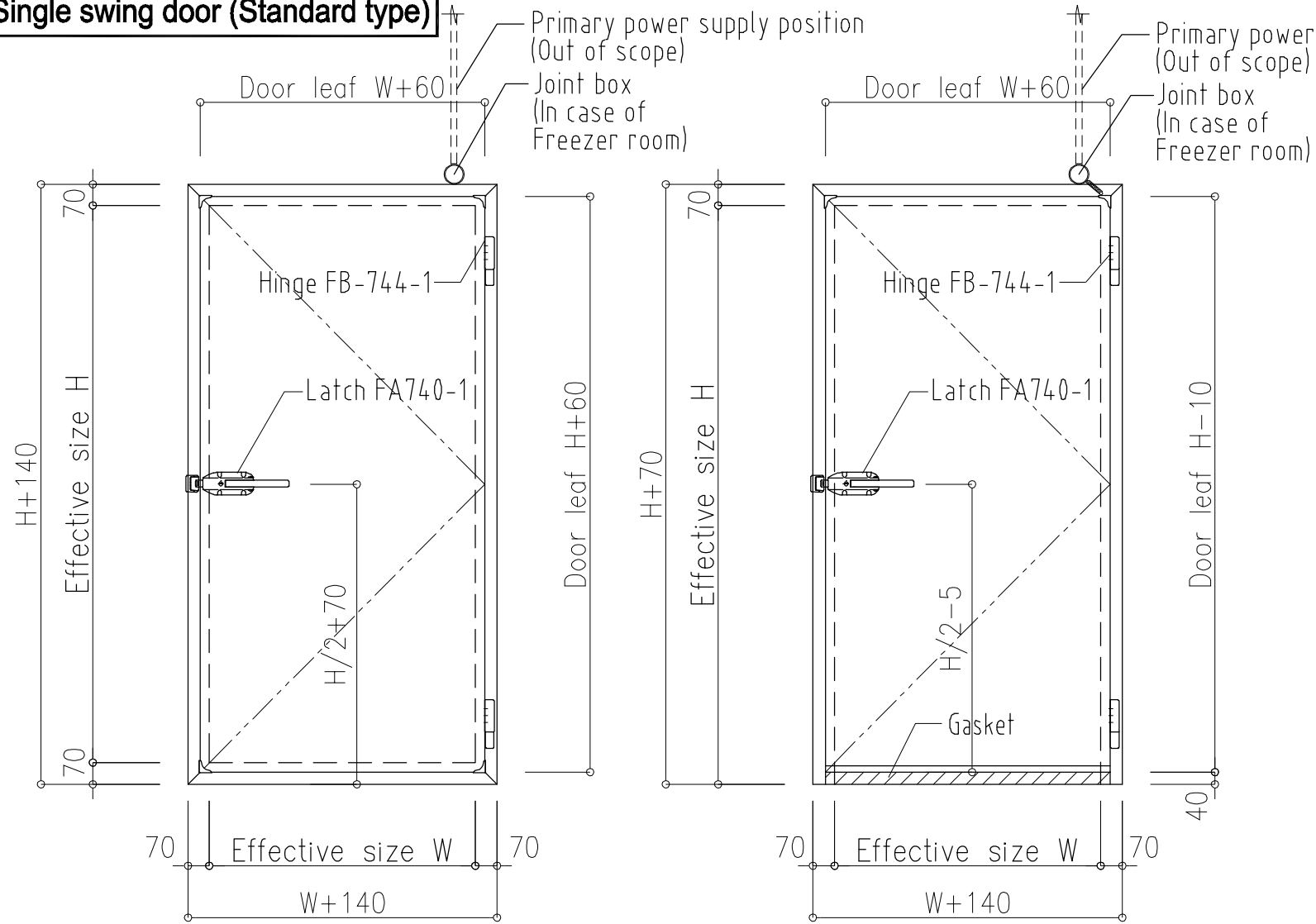


VQ Single swing door (Standard type)

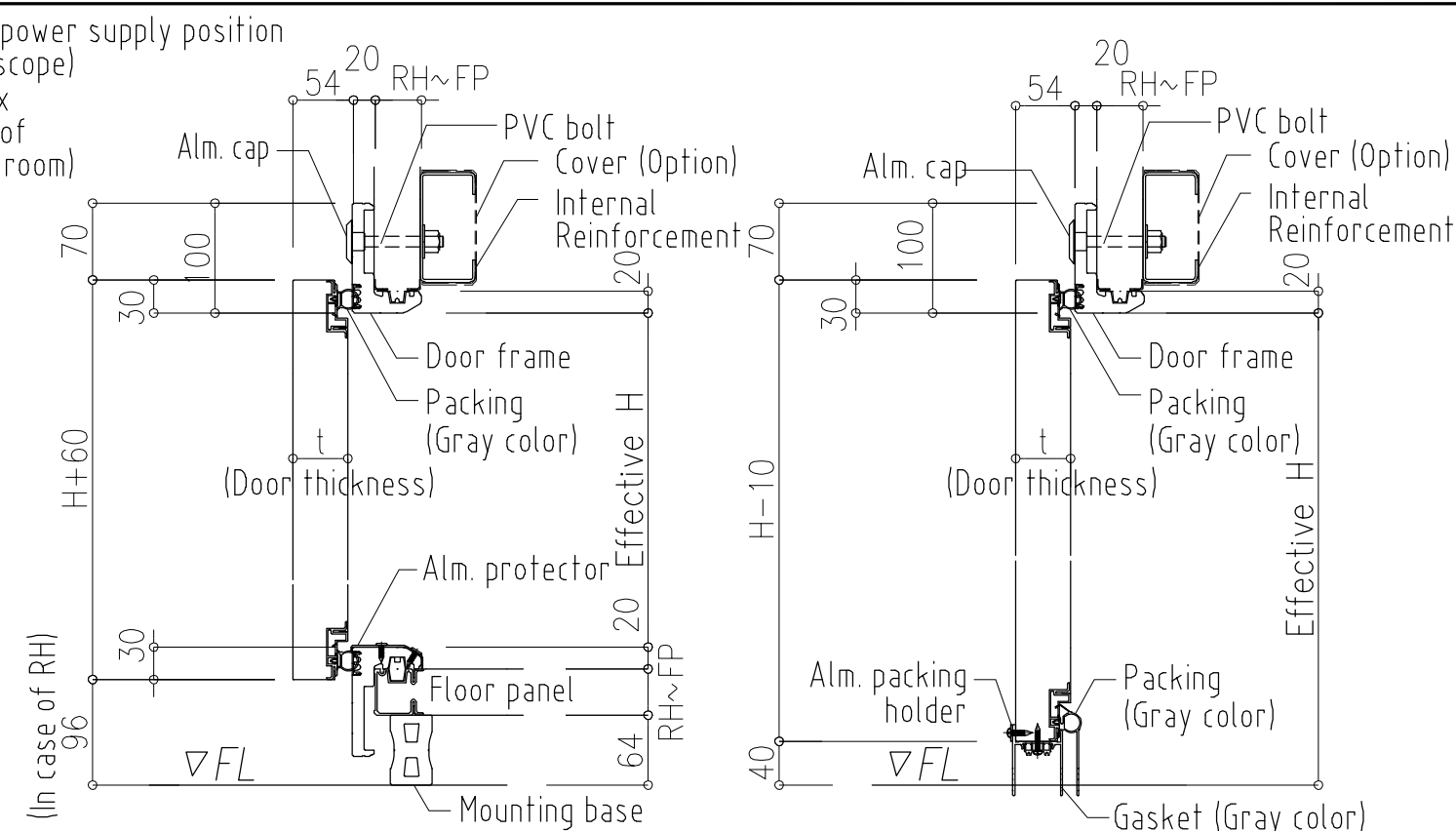
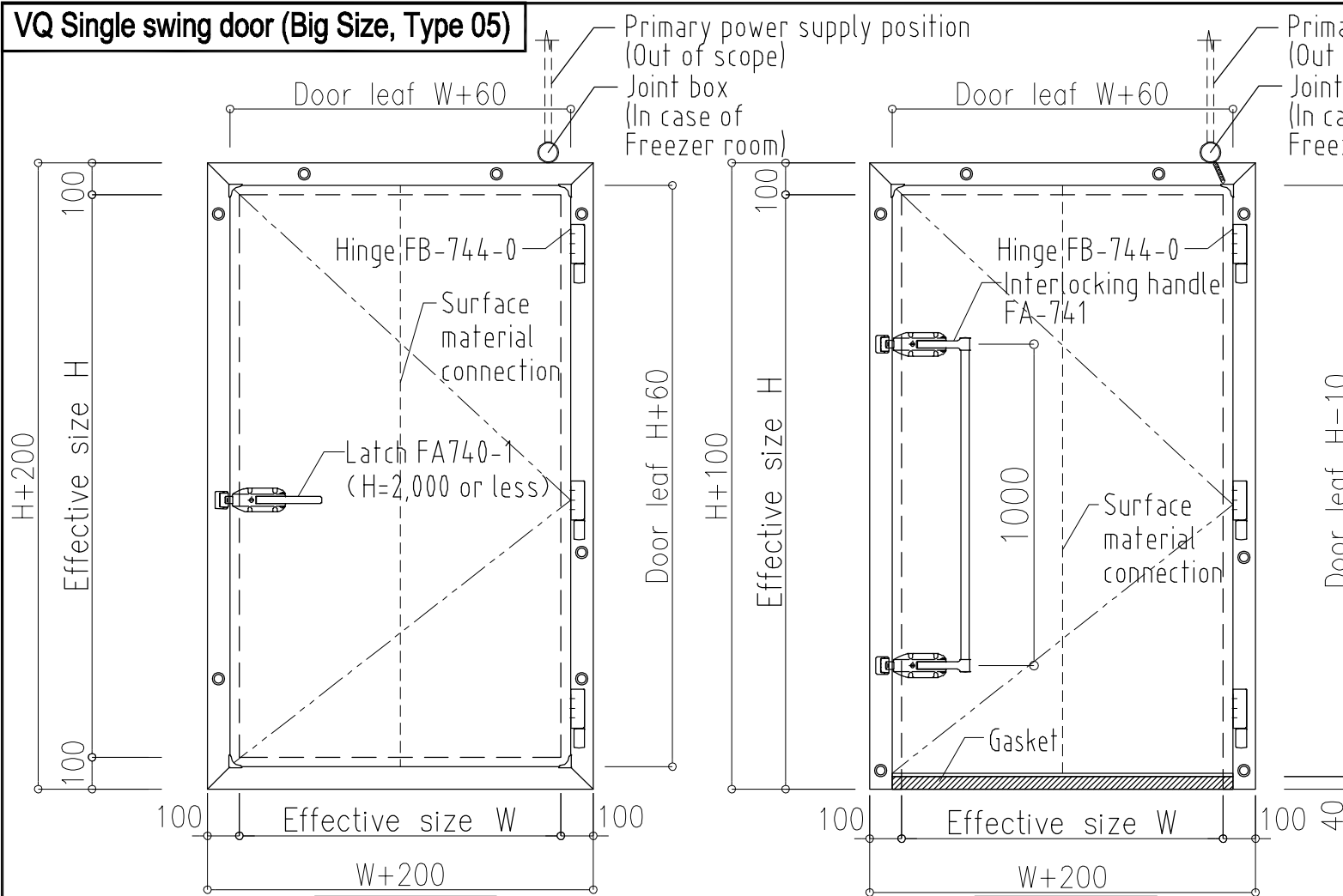


	RH type Refrigerator	FR type Freezer room	FS type Freezer room	FP type Freezer room	FT type Freezer room	
Door thickness	50 mm	75 mm	100 mm	125 mm	150 mm	
Operating temperature	268K (-5° C)	253K (-20° C)	238K (-35° C)	228K (-45° C)	218K (-55° C)	
Component	Rigid polyurethane foam					
Surface material	Color steel sheet, Color Aluminum, Stainless steel, PVC steel plate					
Door frame	High strength foam resin frame *See remarks					
Lower part of the door	4F	Resin PVC frame				
	3F	Gasket				
Standard opening	4F	W860xH1800 mm				
	3F	W860xH1870 mm				
Heater wattage	4F	Option (100V-33W)	100V-54W	100V-54W	100V-65W	100V-76W
	3F	Option (100V-44W)	100V-66W	100V-66W	100V-78W	100V-87W

- Remarks
- All emergency escape devices are attached.
 - In standard, the bottom Gasket is made longer. Please set bottom of the door away from the Floor 40mm.
 - From FR type, Door should be equipped with a heater.
 - Door with 1 side surface material is Color Aluminum and 1 side is other surface material can NOT be manufactured.
 - The FT type entrance frame is covered with the same surface material as the wall panel inner plate in the high strength foam resin frame.
 - Minimum effective opening differs depending on production factory, so please contact our person in charge.

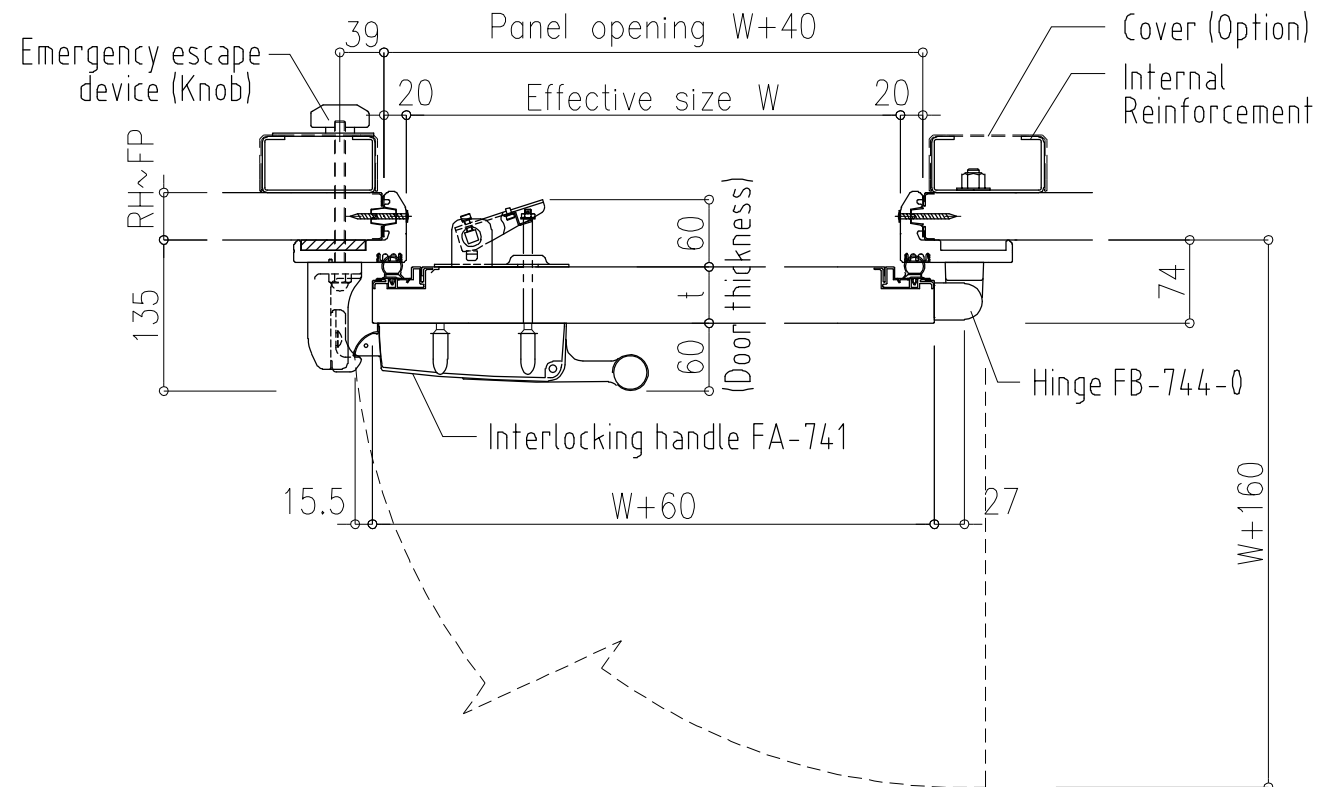
Scale	Revise NO.	Orders NO.	Drawing NO.
A4-1/10			CS-20
Drawing name		日軽パネルシステム株式会社	
VQ Single swing door (Standard type)			

VQ Single swing door (Big Size, Type 05)



4 Frames (4F)

3 Frames (3F)



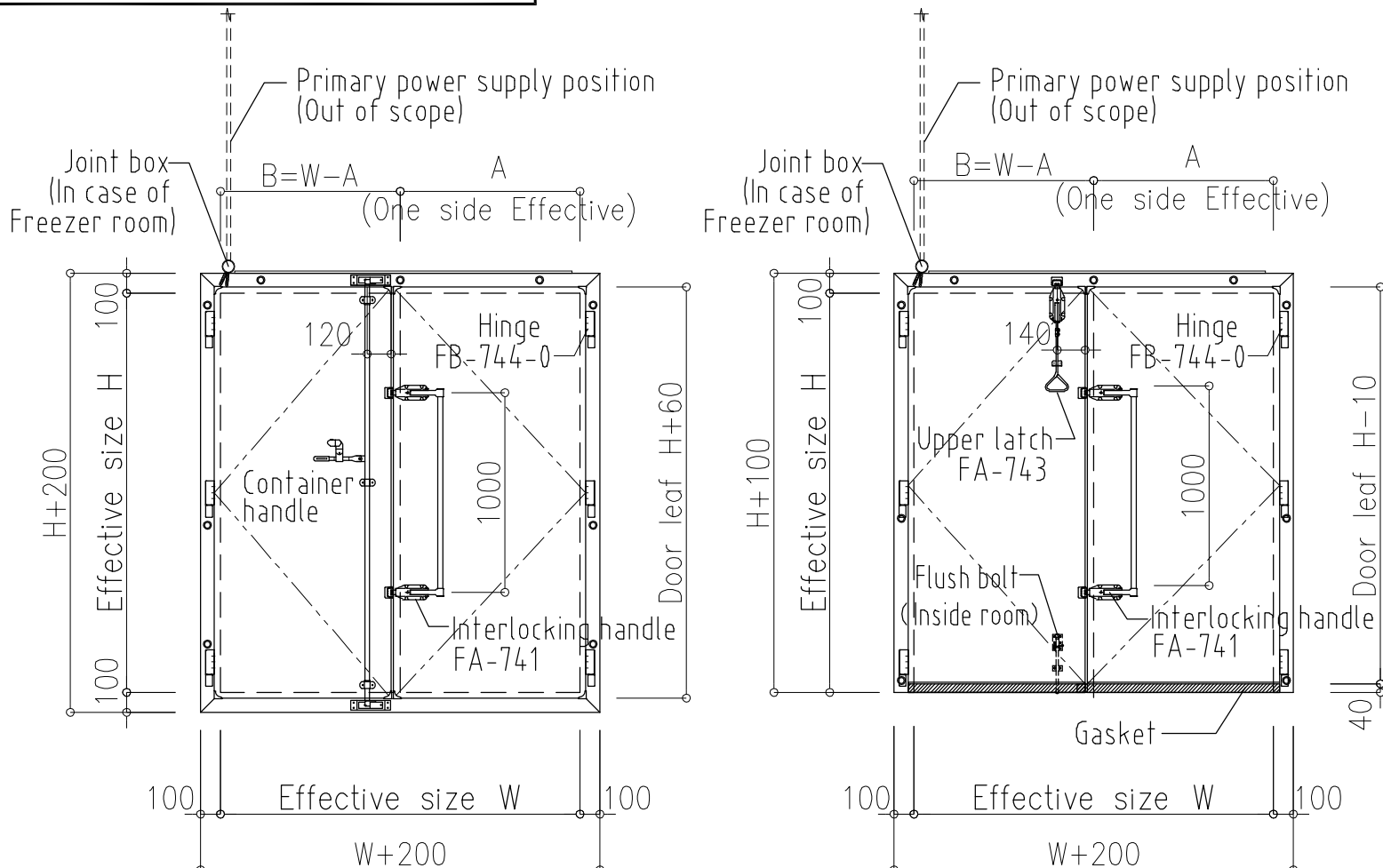
	RH type Refrigerator	FR type Freezer room	FS type Freezer room	FP type Freezer room	FT type Freezer room
Door thickness	50 mm	75 mm	100 mm	125 mm	150 mm
Operating temperature	268K (-5° C)	253K (-20° C)	238K (-35° C)	228K (-45° C)	218K (-55° C)
Component	Rigid polyurethane foam				
Surface material	Color steel sheet, Color Aluminum, Stainless steel, PVC steel plate				
Door frame	High strength foam resin frame				*See remarks
Lower part of the door	Resin PVC frame				
	Gasket				
Minimum size	4F	W300xH340 mm		W350xH340 mm	W550xH550 mm
	3F	W300xH400 mm		W350xH400 mm	
Maximum size	4F	W1200xH2900 mm		W1200xH2200 mm	W900xH2000 mm
	3F	W1200xH3000 mm			
Heater wattage	4F	(Option)Frame: 6 Frame: 10	Frame: 10	Frame: 12	Frame: 14
	3F	(Option)Frame: 6 Frame: 10	Frame: 10	Frame: 12	Frame: 14
		(Option)Lower part:10 Lower part: 12	Lower part: 12	Lower part: 14	Lower part: 14

Remarks

- All emergency escape devices are attached
- In standard, the bottom Gasket is made longer
Please set bottom of the door away from the Floor 40mm
- From FR type, Door should be equipped with a heater
- Door with 1 side surface material is Color Aluminum and 1 side is other surface material can NOT be manufactured.
- When the height is 1800mm or more, it becomes 3 hinges, when it exceeds 2000mm, it becomes 4 hinges
- The FT type entrance frame is covered with the same surface material as the wall panel inner plate in the high strength foam resin frame.
- When H≥2000mm or W≥1100mm, Reinforced inside the Room is necessary.

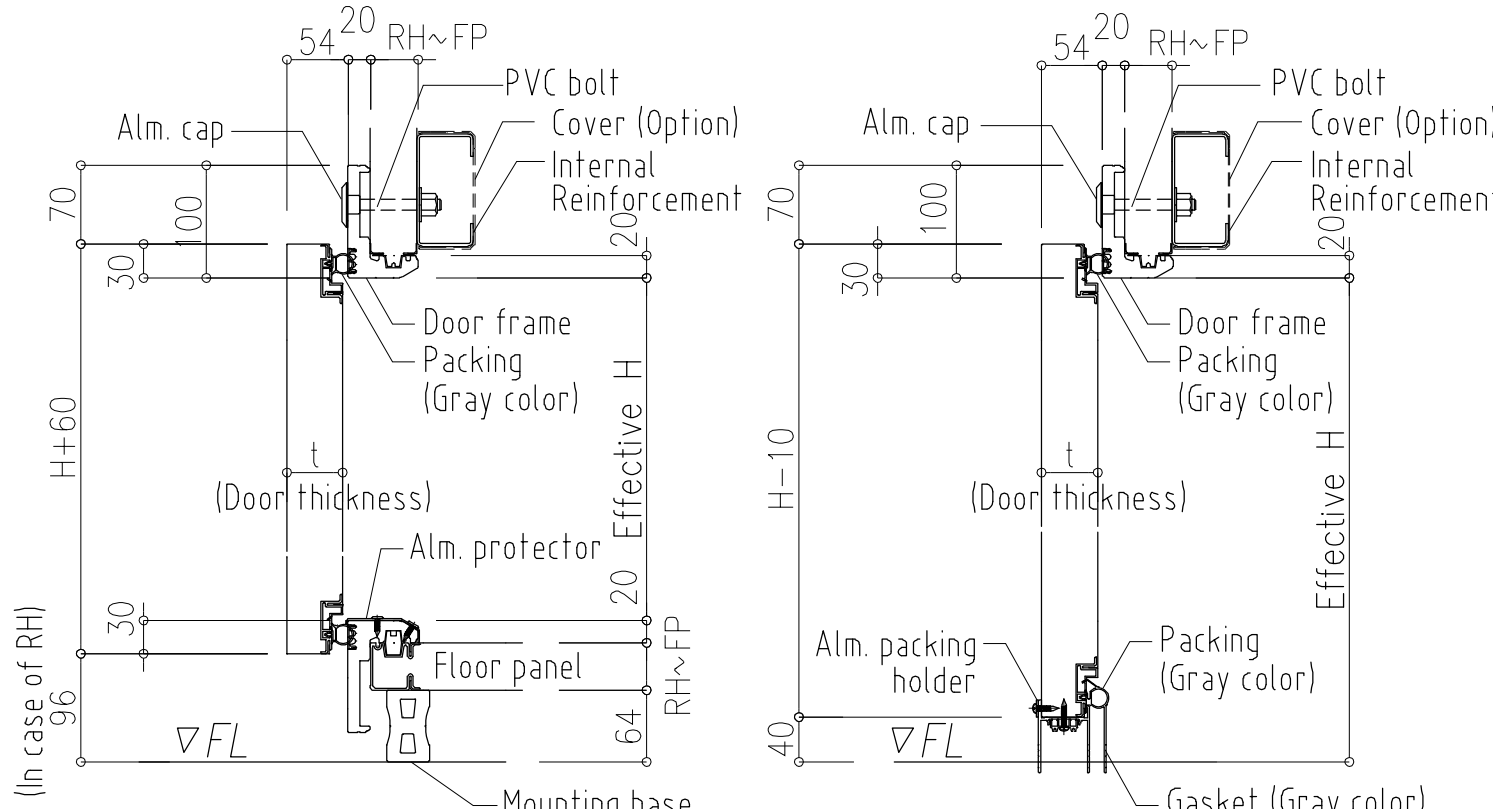
Scale	Revise NO.	Orders NO.	Drawing NO.
A4-1/10			CS-21

VQ Double swing door (Big size, Type 05)



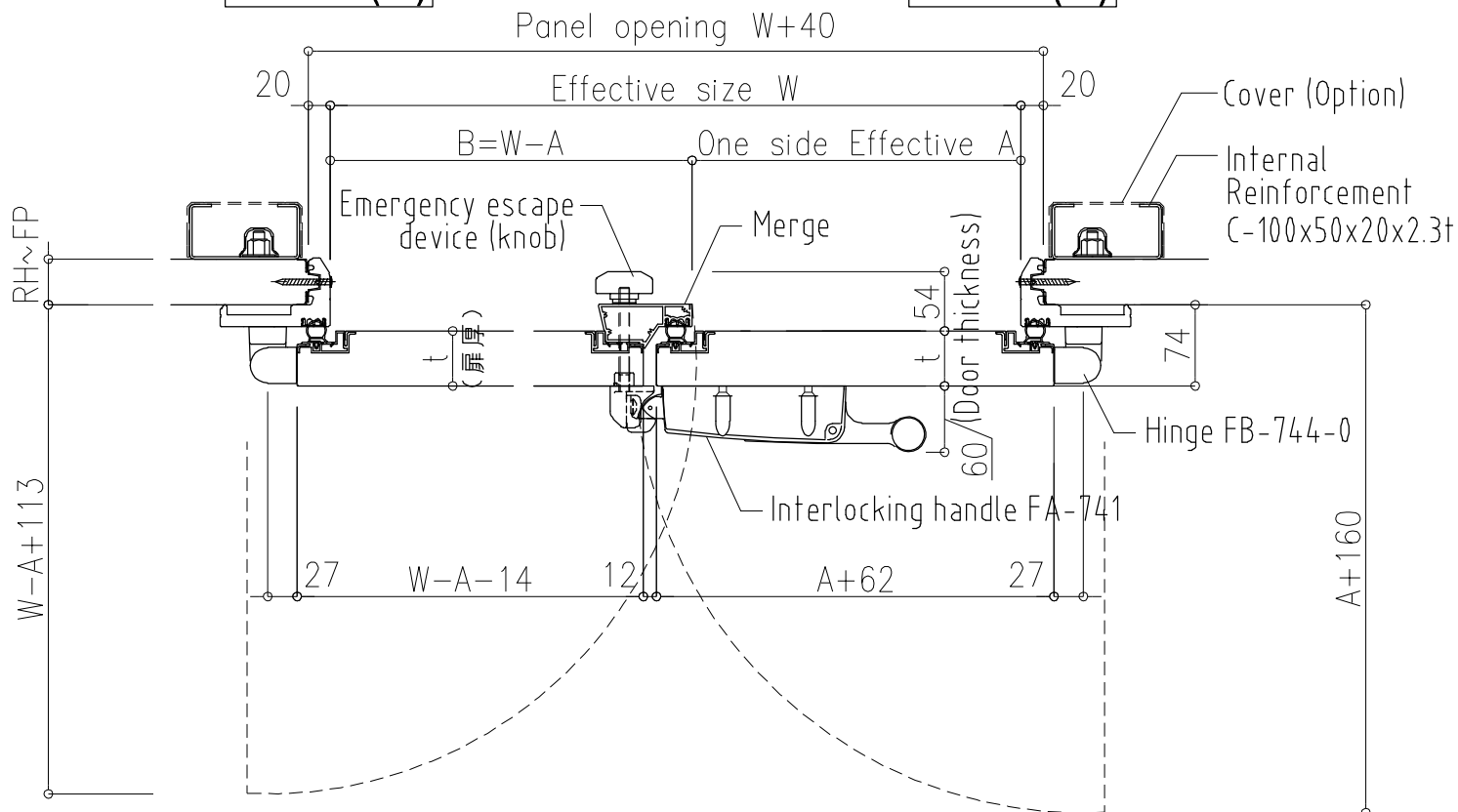
4 Frames (4F)

3 Frames (3F)



4 Frames (4F)

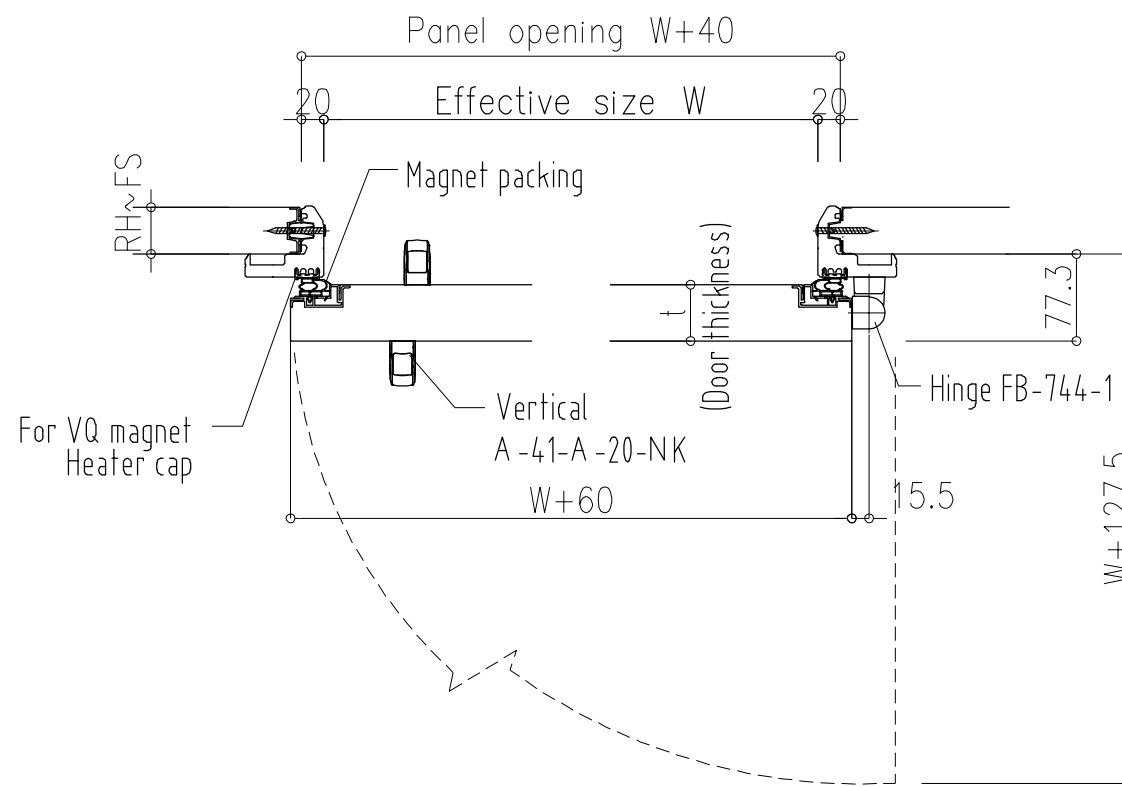
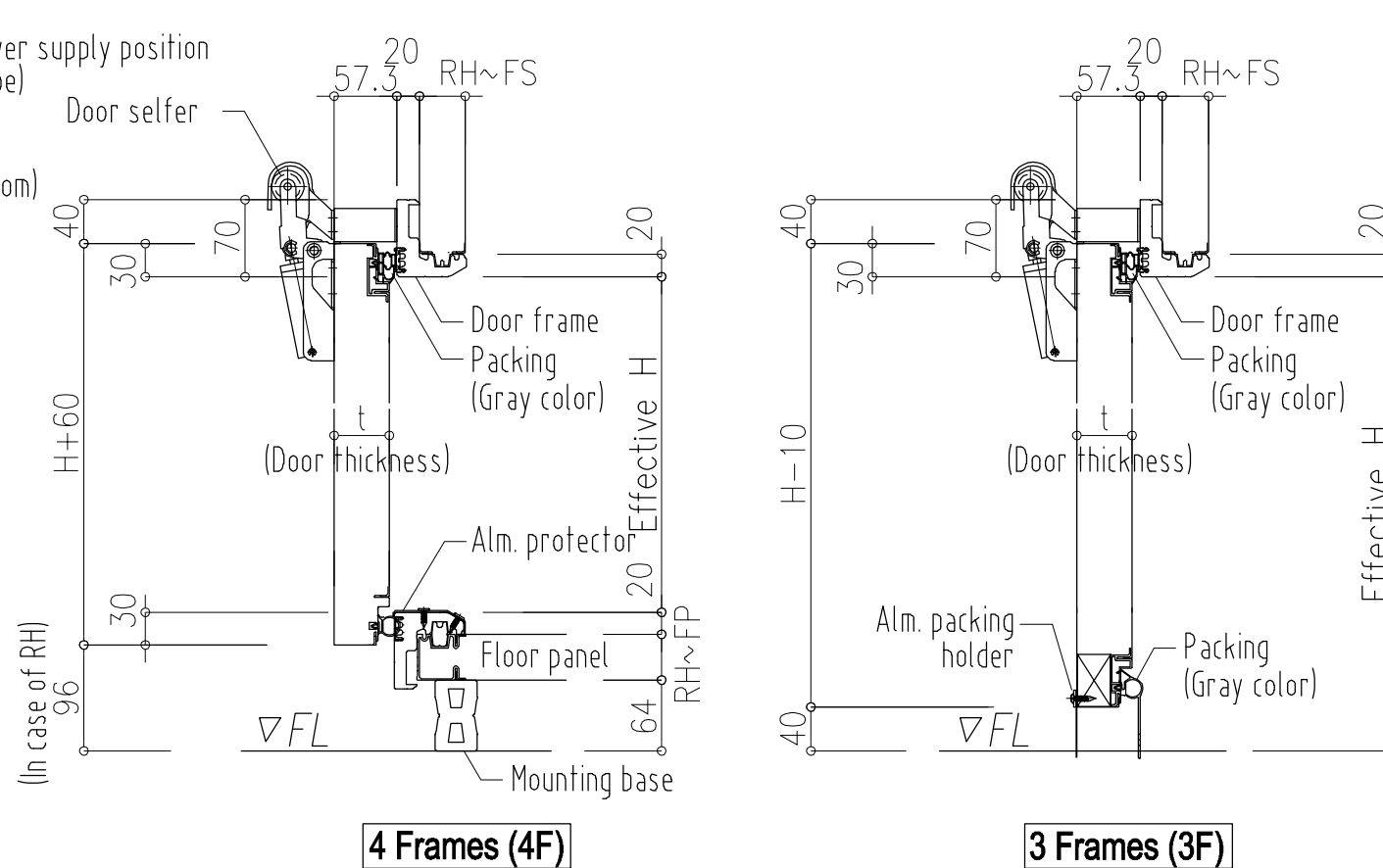
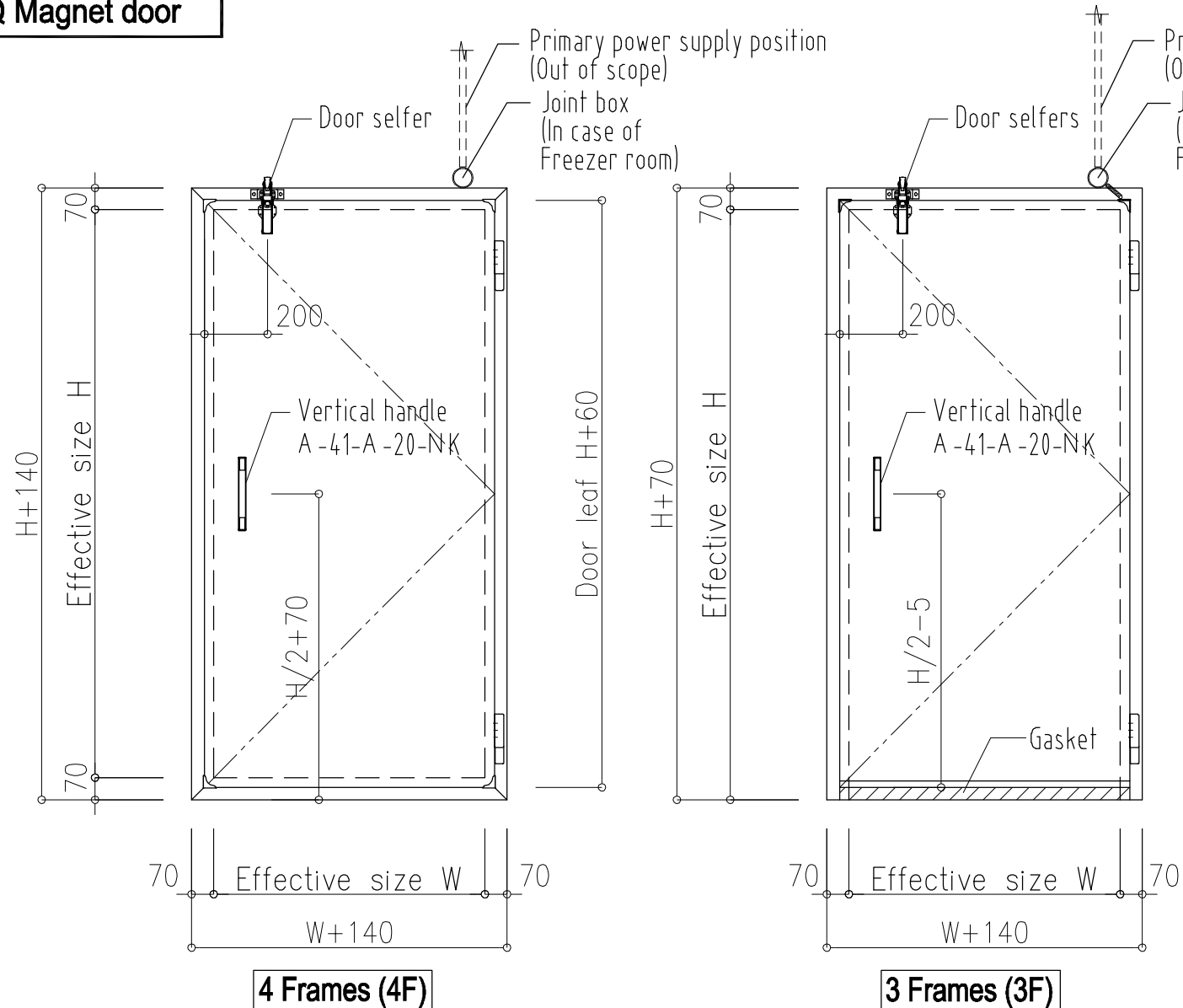
3 Frames (3F)




Door thickness	RH type Refrigerator	FR type Freezer room	FS type Freezer room	FP type Freezer room	
	50 mm	75 mm	100 mm	125 mm	
Operating temperature	268K (-5° C)	253K (-20° C)	238K (-35° C)	228K (-45° C)	
Component	Rigid polyurethane foam				
Surface material	Color steel sheet, Color Aluminum, Stainless steel, PVC steel plate				
Door frame	High strength foam resin frame				
Lower part of the door	4F	Resin PVC frame			
	3F	Gasket			
Maximum size	4F	W2400xH2900 mm		W2200xH2200 mm	
	3F	W2400xH3000 mm			
Heater wattage	4F	(Option)Frame / Merge: 6	Frame / Merge: 10	Frame / Merge: 10	Frame / Merge: 12
		(Option)Frame / Merge: 6	Frame / Merge: 10	Frame / Merge: 10	Frame / Merge: 12
	3F	(Option)Lower part: 10	Lower part: 12	Lower part: 12	Lower part: 14
Remarks	<ul style="list-style-type: none"> All emergency escape devices are attached. In standard, the bottom Gasket is made longer. Please set bottom of the door away from the Floor 40mm. From FR type, Door should be equipped with a heater. Door with 1 side surface material is Color Aluminum and 1 side is other surface material can NOT be manufactured. When the height is 1800mm or more, it becomes 3 hinges, when it exceeds 2000mm, it becomes 4 hinges. 				

Scale	Revise NO.	Orders NO.	Drawing NO.
A4-1/10			CS-22

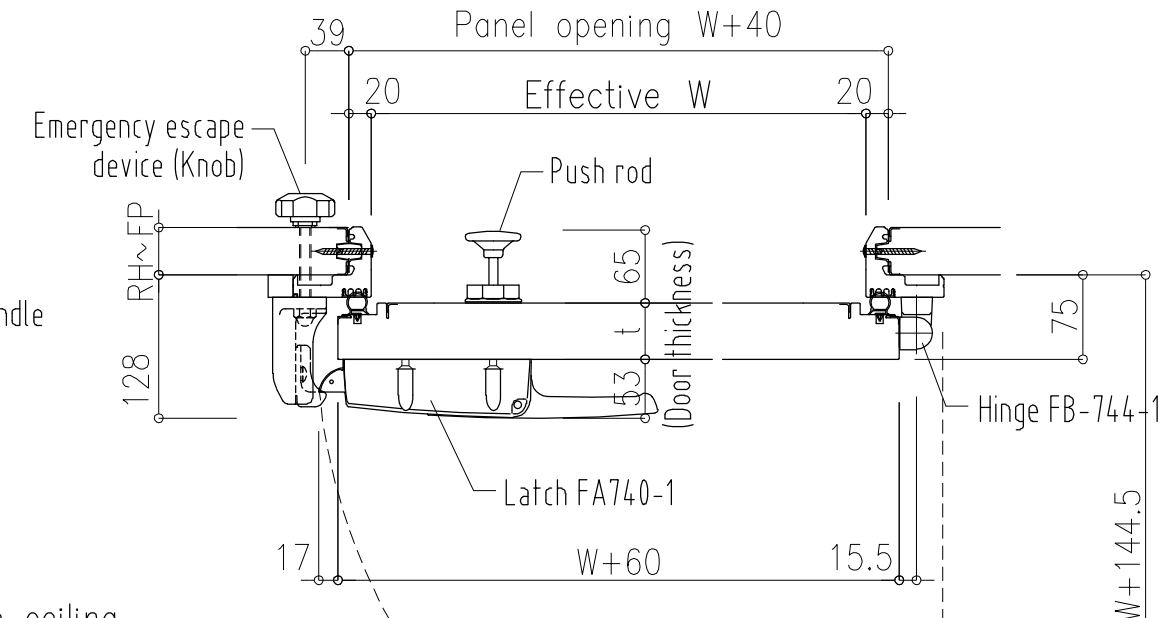
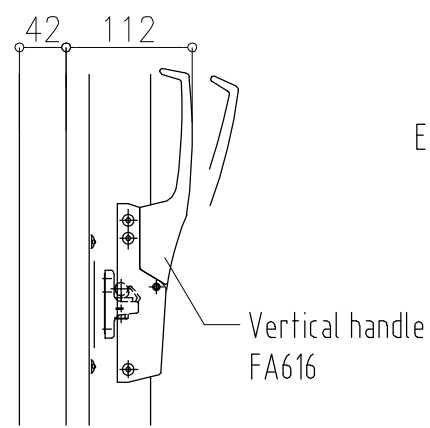
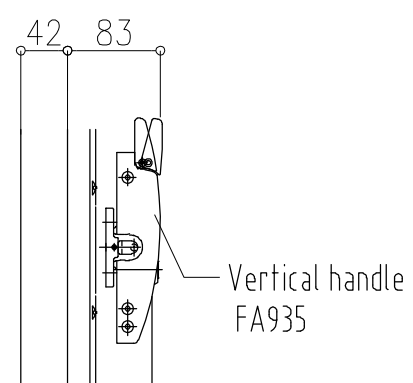
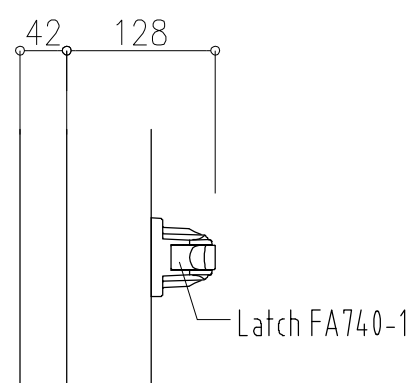
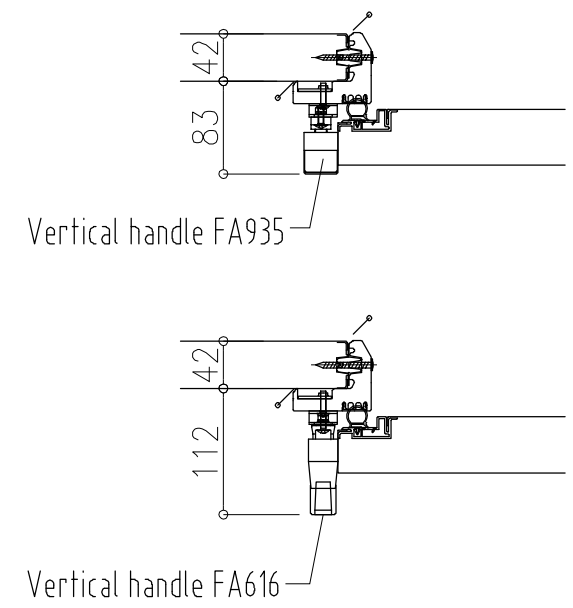
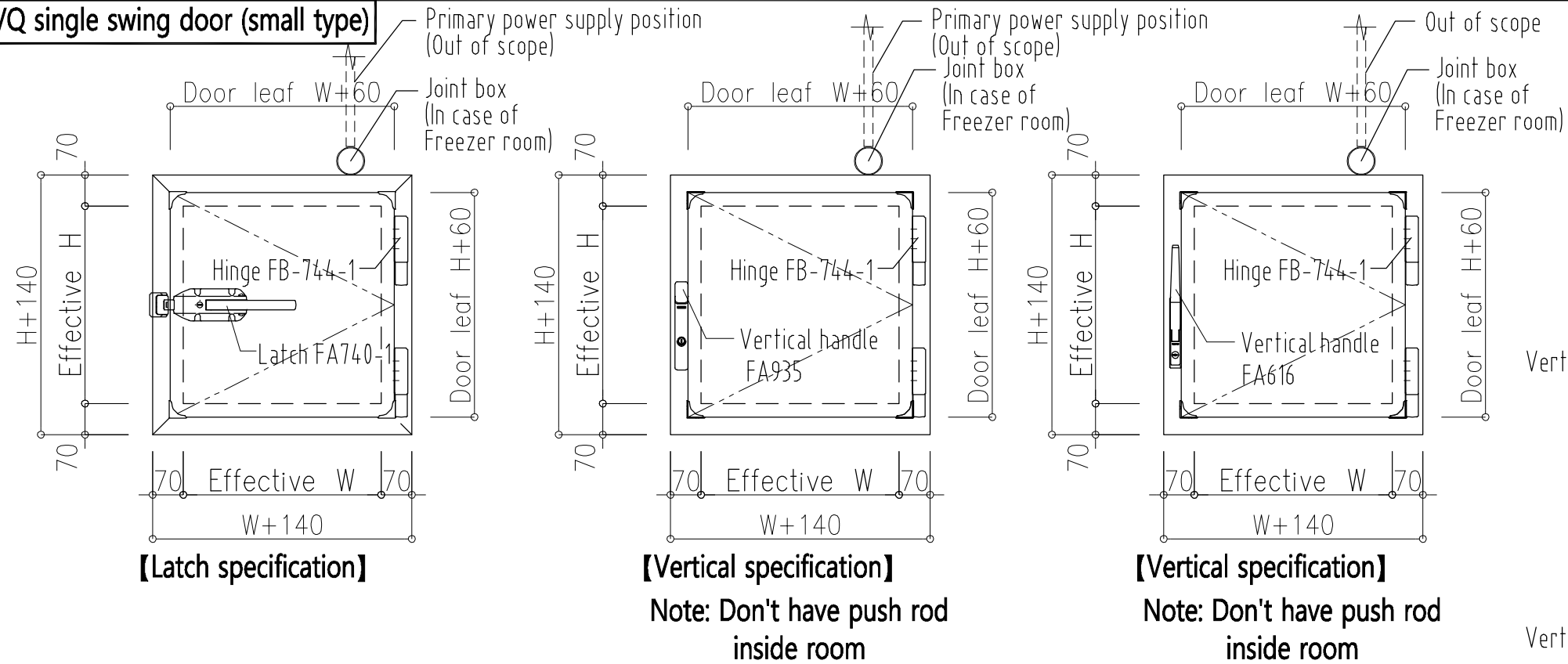
VQ Magnet door



	RH type Refrigerator	FR type Freezer room	FS type Freezer room
Door thickness	50 mm	75 mm	100 mm
Operating temperature	268K (-5° C)	253K (-20° C)	238K (-35° C)
Component	Rigid polyurethane foam		
Surface material	Color steel sheet, Color Aluminum, Stainless steel, PVC steel plate		
Door frame	High strength foam resin frame		
Lower part of door	Resin PVC frame, Gasket		
Inlet lower part	Resin PVC frame=20mm, Gasket=0mm		
Standard size (mm)	4F	W860xH1800mm	
	3F	W860xH1870mm	
Maximum size (mm)	4F	W860xH1820mm	
	3F	W860xH1870mm	
Heater wattage	4F	Option 6W/m	Type 10W/m
	3F	Option 10W/m	Type 12W/m
Remarks	<ul style="list-style-type: none"> Door frame size of FR panel is 100mm Door with W?500 or H?1500, Door Selfer is an Option The heater cap with heater is made from Aluminum Door with 1 side surface material is Color Aluminum and 1 side is other surface material can NOT be manufactured 		

	Scale	Revise NO.	Orders NO.	Drawing NO.
	A4-1/10			CS-23
Drawing name			 日軽パネルシステム株式会社	
VQ Magnet door				


VQ single swing door (small type)



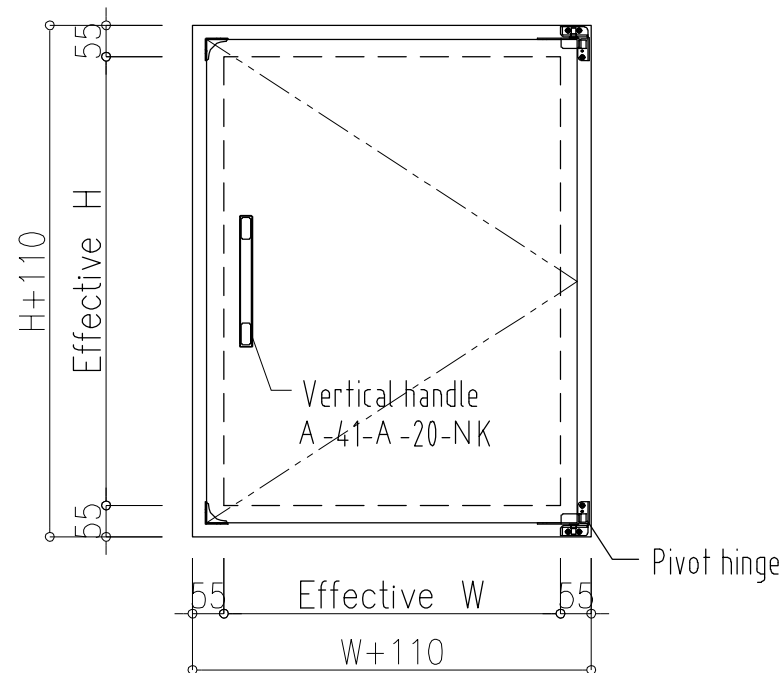
In case of installation on the ceiling

- It is based on opening upwards
- Do not step on the inspection hole, because accident or damage to the product may occur

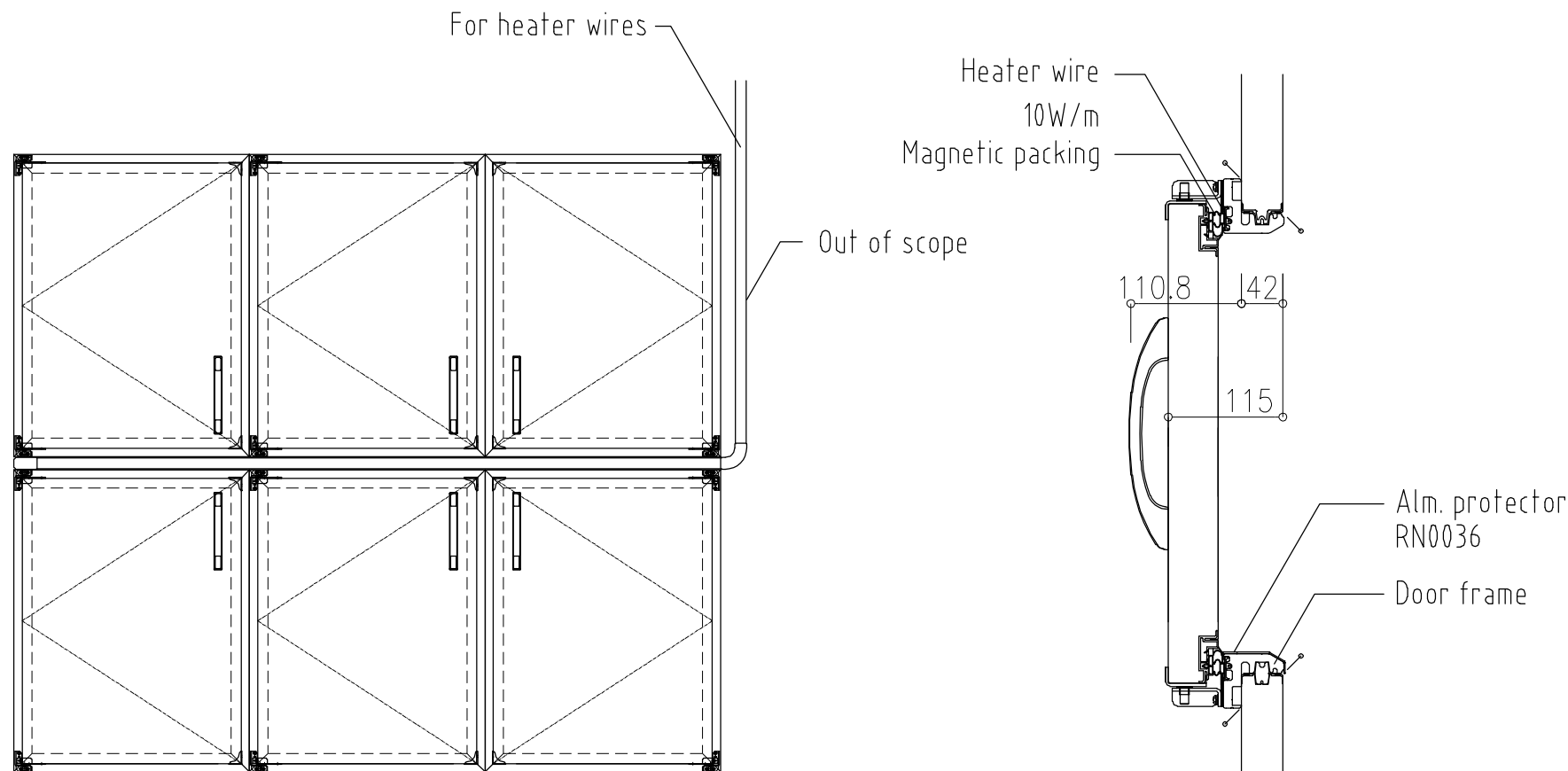
	RH type Refrigerator	FR type Freezer room	FS type Freezer room	FP type Freezer room	FT type Freezer room
Door thickness	50 mm	75 mm	100 mm	125 mm	150 mm
Operating temperature	268K (-5° C)	253K (-20° C)	238K (-35° C)	228K (-45° C)	218K (-55° C)
Component	Rigid polyurethane foam				
Surface material	Color steel sheet, Color Aluminum, Stainless steel, PVC steel plate				
Door frame	High strength foam resin frame				*See remarks
Minimum size	Latch handle	W300xH340		W350xH340	W550xH550
	Vertical handle	W400xH400			
Standard size (mm)	W450xH450				
Heater wattage	Option (100V-12W)	100V-19W	100V-19W	100V-23W	100V-32W
Remarks	<ul style="list-style-type: none"> ● From FR type, Door should be equipped with a heater ● It is with an emergency escape device (Excluding FA935, FA616) ● Door with 1 side surface material is Color Aluminum and 1 side is other surface material can NOT be manufactured ● The FT type entrance frame is covered with the same surface material as the wall panel inner plate in the high strength foam resin frame 				

	Scale	Revise NO.	Orders NO.	Drawing NO.
	A4-1/10			CS-24
Drawing name			 日軽パネルシステム株式会社	
VQ single swing door (small type)				

VQ reach magnet door

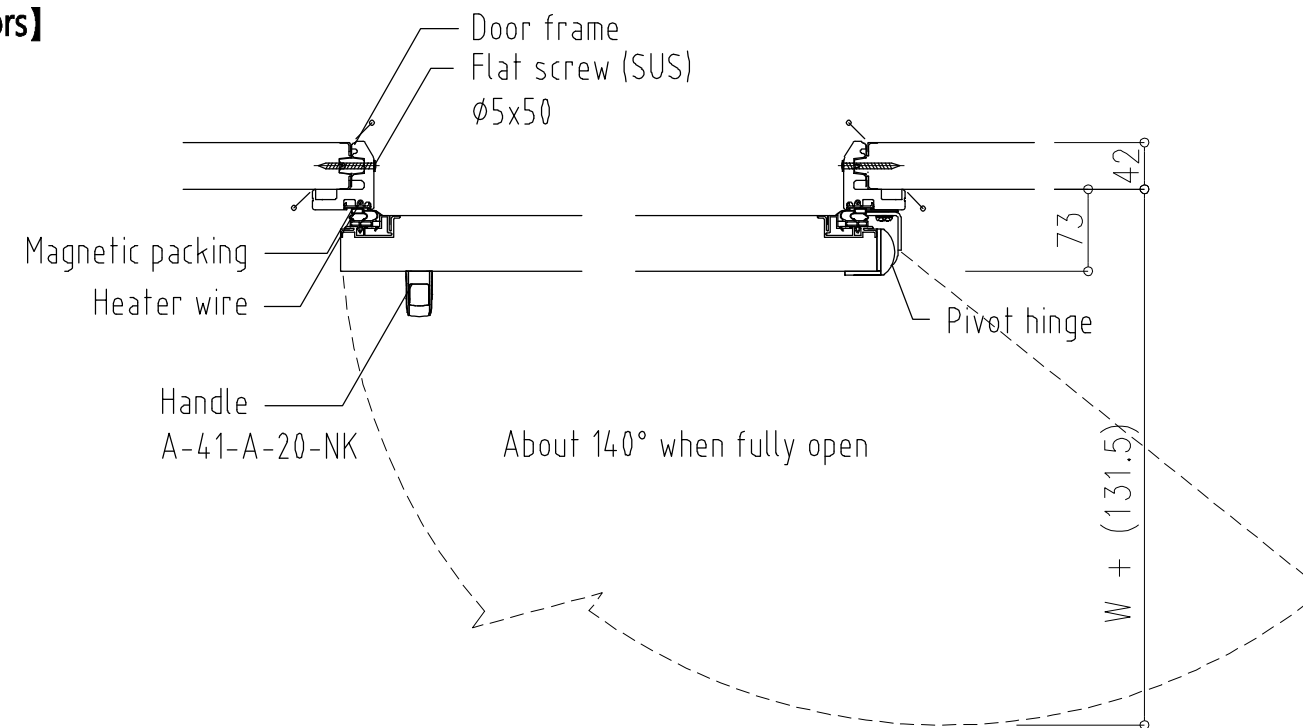



【Note】 Don't have Internal handle



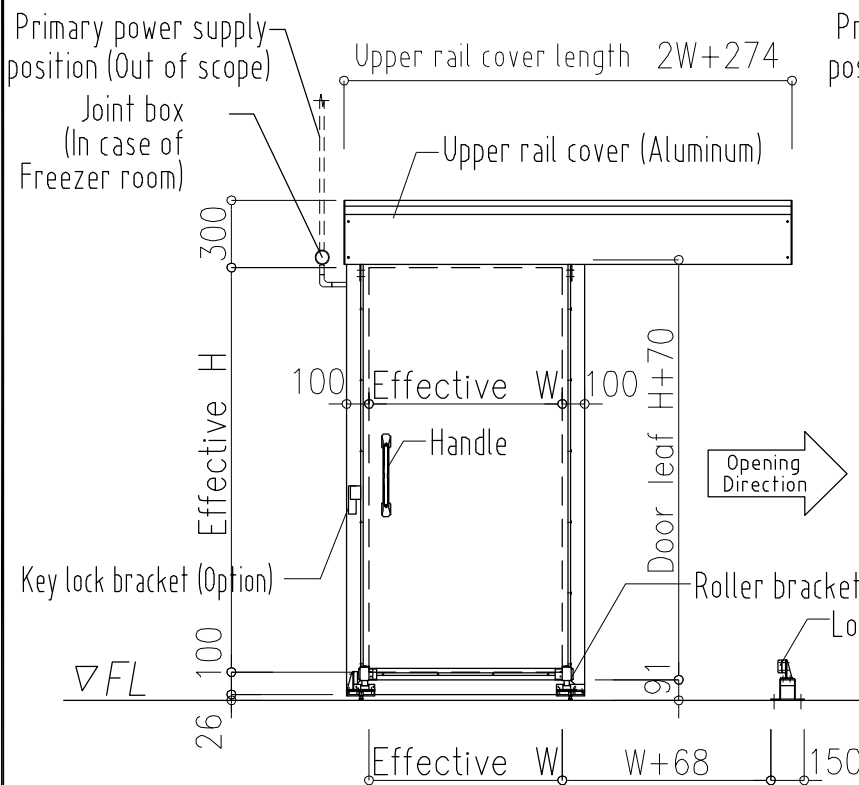
【Example of use:6 doors】

	RH type Refrigerator	FS type Freezer room
Door thickness	50 mm	100 mm
Operating temperature	268K (-5° C)	238K (-35° C)
Component	Rigid polyurethane foam	
Surface material	Color steel sheet, Color Aluminum, Stainless steel, PVC steel plate, Fluorine steel plate, Antibacterial steel plate	
Door frame	High strength foam resin frame	
Standard size (mm)	W600xH800	
Heater wattage	10W/m	18W/m
Opening method	Manual type	
Remarks	<ul style="list-style-type: none"> Door with 1 side surface material is Color Aluminum and 1 side is other surface material can NOT be manufactured 	

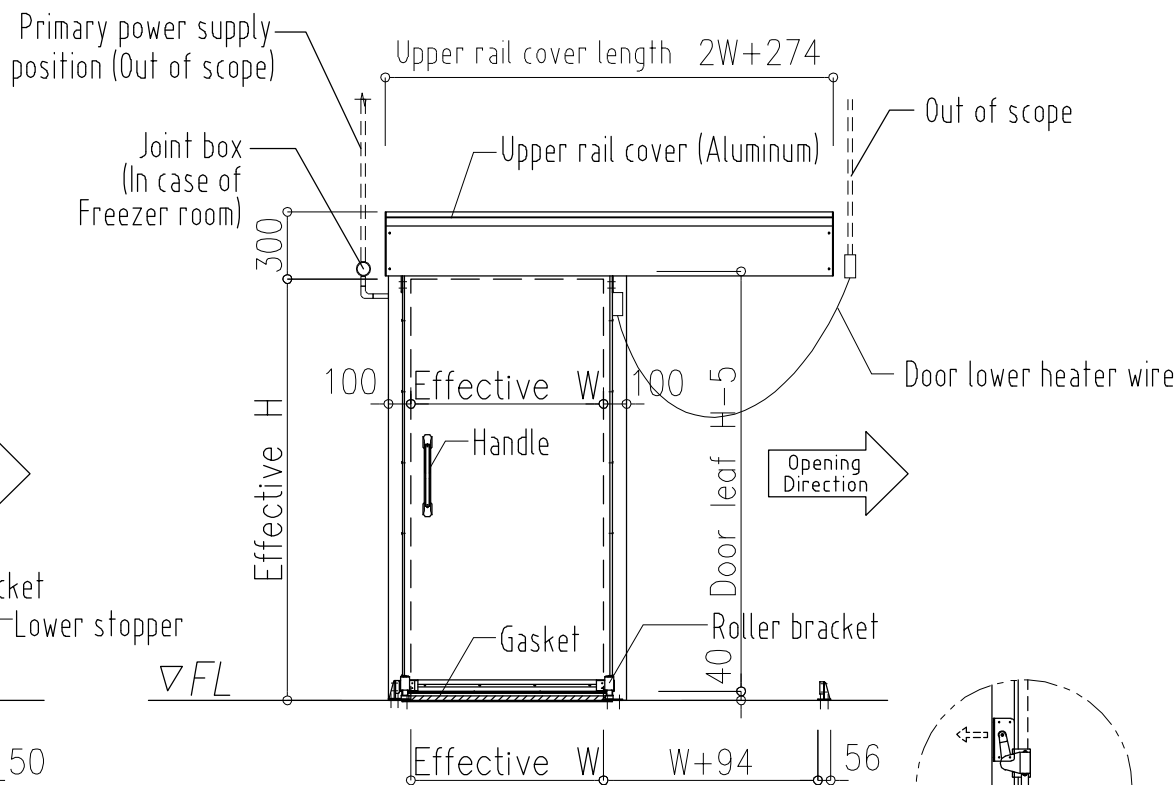


	Scale	Revise NO.	Orders NO.	Drawing NO.
	A4-1/10			CS-25
Drawing name			 日軽パネルシステム株式会社	
VQ reach magnet door				

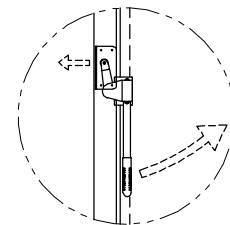
VQ manual single sliding door (Type 09)



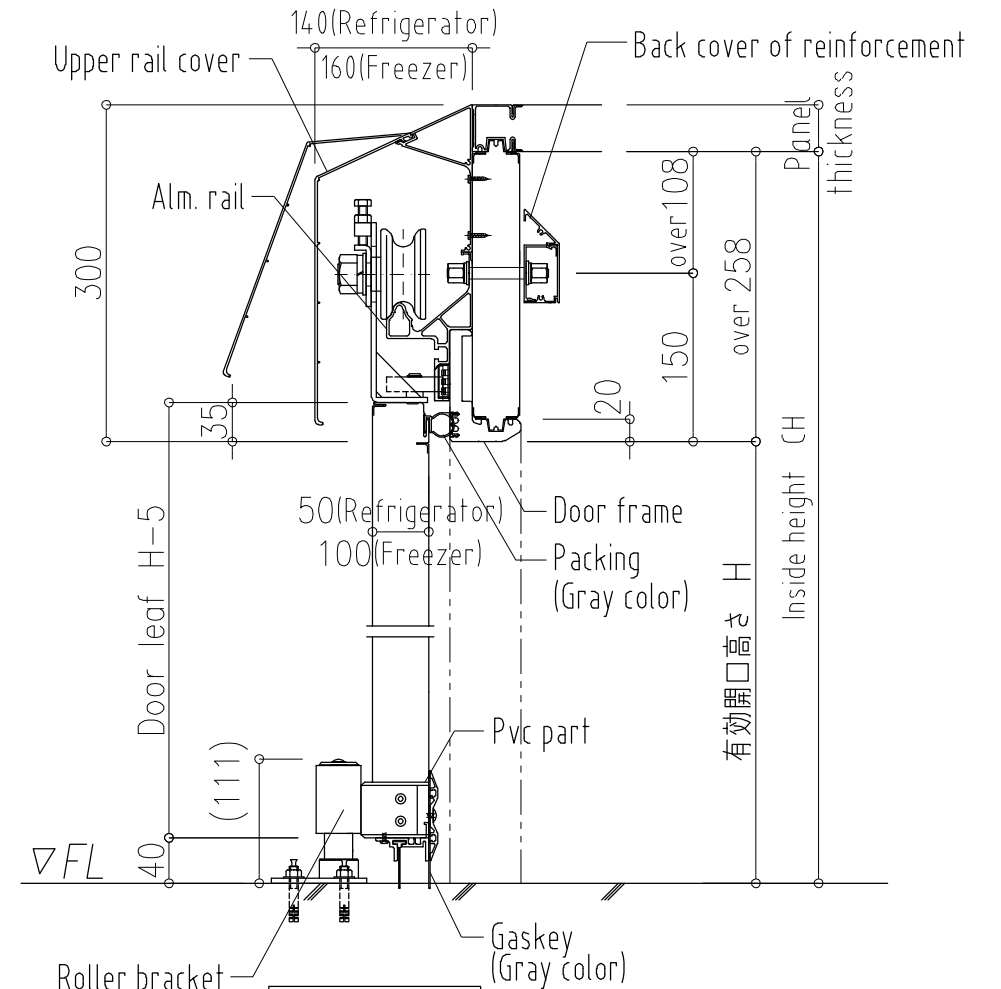
4 Frames (4F)



3 Frames (3F)



Lever handle outside (Option)

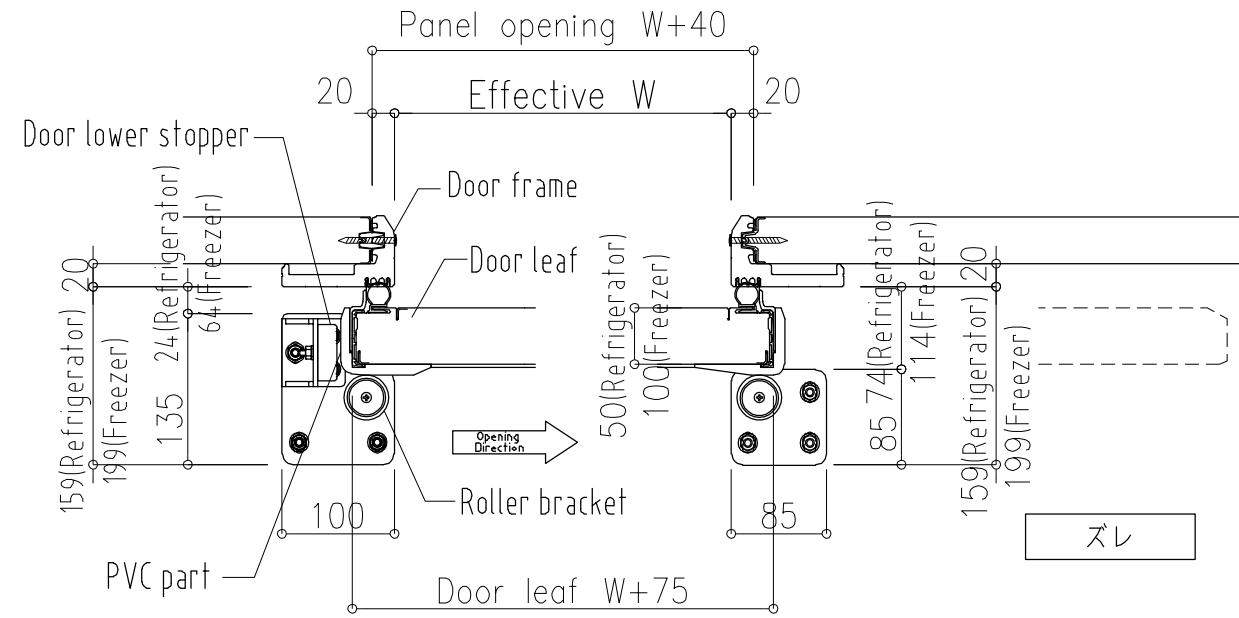
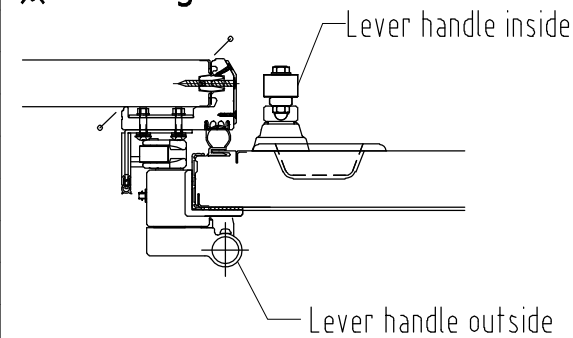


3 Frames (3F)

	RH type Refrigerator	FR type Freezer room	FS type Freezer room
Door thickness	50mm	100mm	100mm
Minimum operating temperature	268K (-5° C)	253K (-20° C)	238K (-35° C)
Component	Rigid polyurethane foam		
Surface material	Color steel sheet, Color Aluminum, Stainless steel, PVC steel plate		
Door frame	High strength foam resin frame		
Rail	Aluminum		
Lower part of door	Resin PVC frame, Gasket		
Inlet lower part	Resin PVC frame=20mm, Gasket=0mm		
Maximum size (mm)	4F	W1600xH2900	
	3F	W1600xH3000	
Standard size (mm)	4F	W860xH1800	
	3F	W860xH1875	
Heater wattage	4F	None	100V-54W (Standard dimension)
	3F	None	100V-78W (Standard dimension)

Lever handle specification (Option)

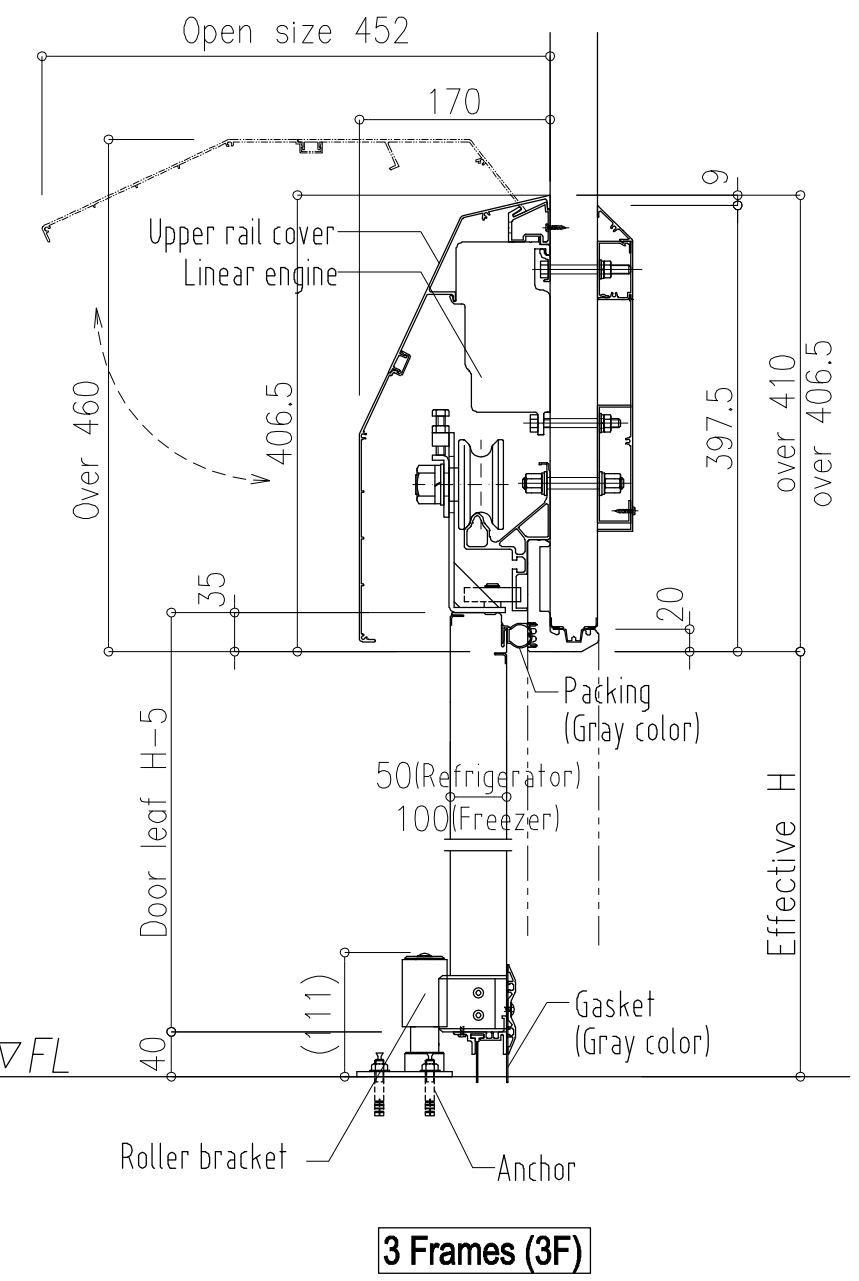
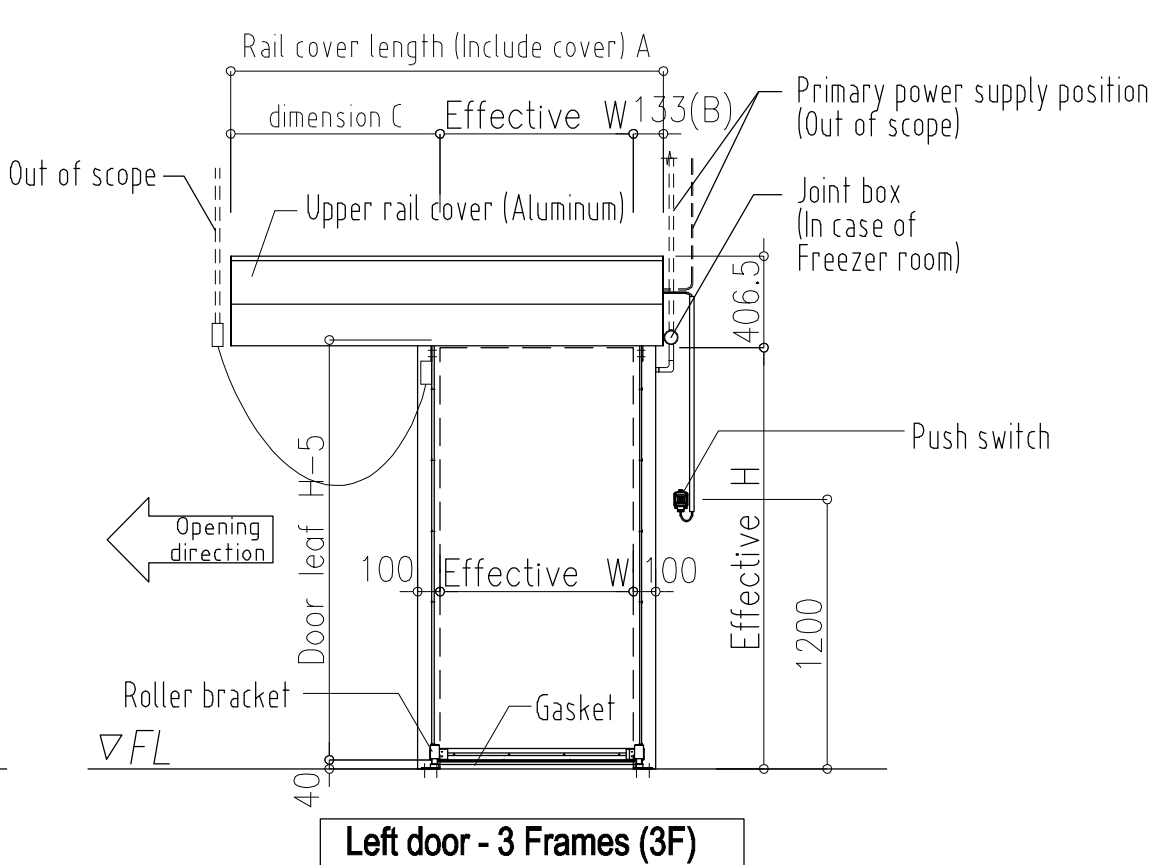
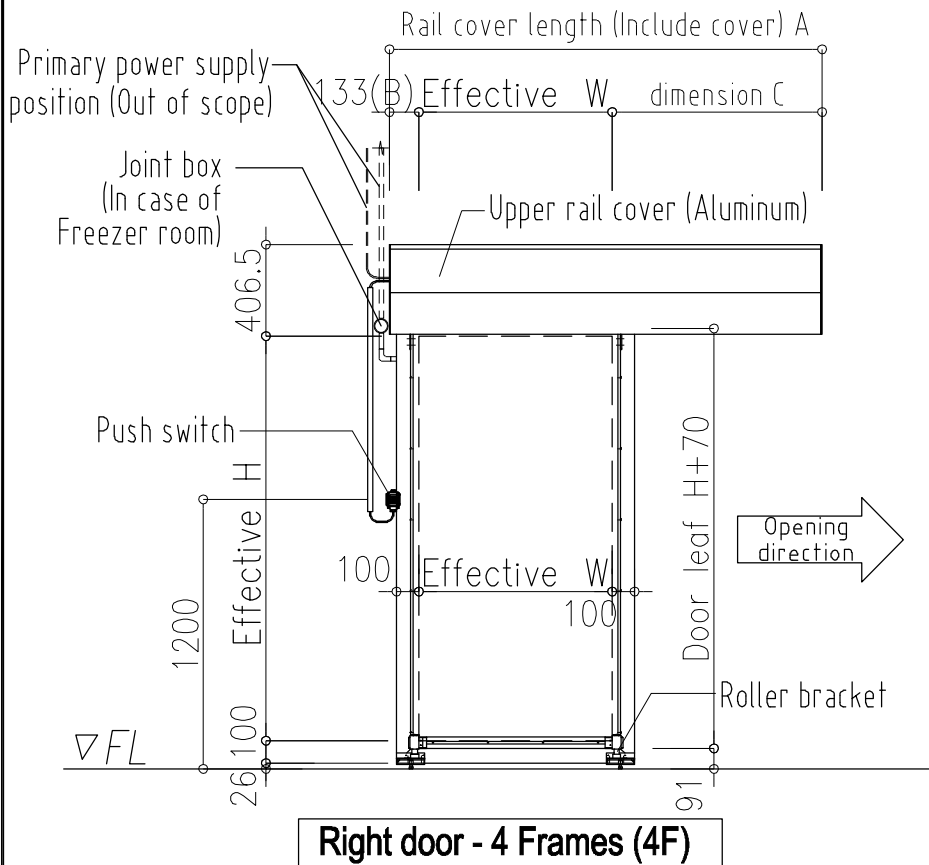
※Remaining 180mm



Opening method	Manual type (Left / Right)		
Lock size	-		
Remarks	<ul style="list-style-type: none"> The minimum manufacturing range for both refrigeration and freezing is W450xH1000 mm The maximum effective size is depends on the production factory, please contact our person in charge Door with 1 side surface material is Color Aluminum and 1 side is other surface material can NOT be manufactured 		

Scale	Revise NO.	Orders NO.	Drawing NO.
A4-1/10			CS-26

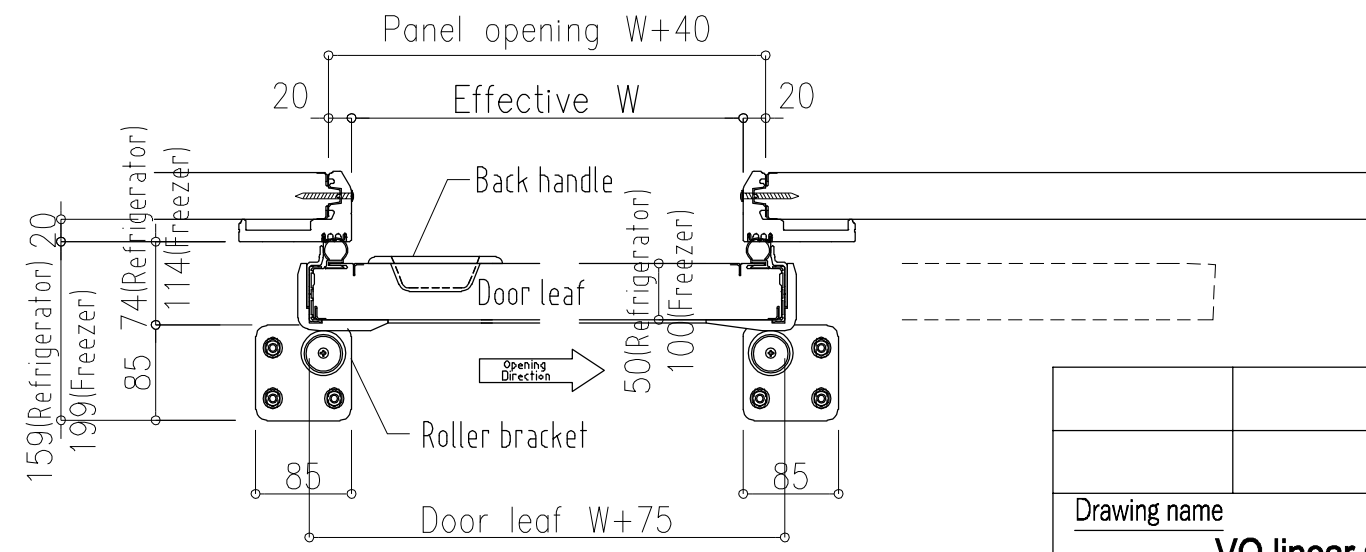
VQ linear single sliding door (Type 09)




【Note】 The length of the rail depends on W dimension
【Note】 There is no front size handle

Dimension of each part

Size	750?W?800	800?W?850	850<W
A	1926	2026	2W+316
B	133	133	133
C	1793-W	1893-W	W+183



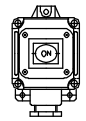
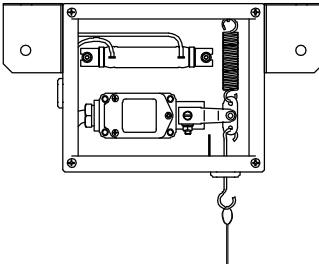
	Scale	Revise NO.	Orders NO.	Drawing NO.
	A4-1/10			CS-27
Drawing name			 日軽パネルシステム株式会社	
VQ linear single sliding door (Type 09)				

VQ linear single sliding door (Type 09) _ Specification

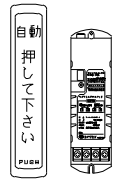
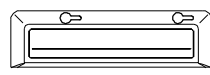
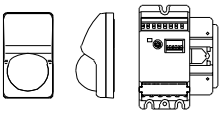
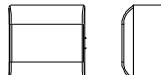
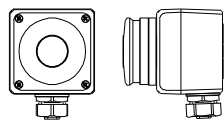
Entire	Power supply voltage	AC100V±10% 50/60Hz	
	Operating Temp. limit	-5~40°C	
	Power consumption	Maximum 1.1 KW , Standby 9.2 KW	
	Control method	Microcomputer control	
	Motor type	Magnet movable linear DC motor	
	Thrust	Over 160N (at AC 100V)	
	Applicable door weight	Under 65 Kg	
	Applicable stroke	860, 1000, 1300, 1500mm	
	Function	Door activation method	Dedicated switch or assist
Door operation		Racheting manual (have to push switch when open or close) or Racheting Auto (standard type is Racheting manual)	
Door movement direction		Right / Left open	
Door operating range		Full open or half open (Option)	
Prevent hand jam		Install features by computer	
Engine protection		Install features by computer	
Operation Unit	Volume adjustment	Opening speed	0.2 m/s to 0.5 m/s (shipped at 0.5 m/s)
		Closing speed	0.2 m/s to 0.5 m/s (shipped at 0.2 m/s)
		Half open position	600mm to 1500mm can be set (600mm when shipped)
	Switch activation	Fully open	Full opening operation
		Semi open	Half open operation (option)
		Prevent abnormal open	When abnormal open, after 10 mins door will auto close with leaving a width 100mm opening


		RH type Refrigerator	FS type Freezer
Door thickness		50 mm	100 mm
Min. operating temperature		268K (-5°C)	238K (-35°C)
Component	Rigid polyurethane foam		
Surface material	Color steel sheet, Color Aluminum, Stainless steel, PVC steel plate		
Door frame	High strength foam resin frame		
Rail	Aluminum		
Lower part of door	Resin PVC frame, Gasket		
Maximum opening	4 F	W1500x2000mm	W1300x2000mm
	3 F	W1500x2100mm	W1300x2100mm
Standard opening	4 F	W860x1800mm	
	3 F	W860x1875mm	
Heater wattage	4 F	No heater wire	100V-54W
	3 F	No heater wire	100V-78W
Remarks	<ul style="list-style-type: none"> When used door as a partition, Inside temp. is set to -35°C, outside is set to -5°C Door with 1 side surface material is Color Aluminum and 1 side is other surface material can NOT be manufactured 		

Recommended switch

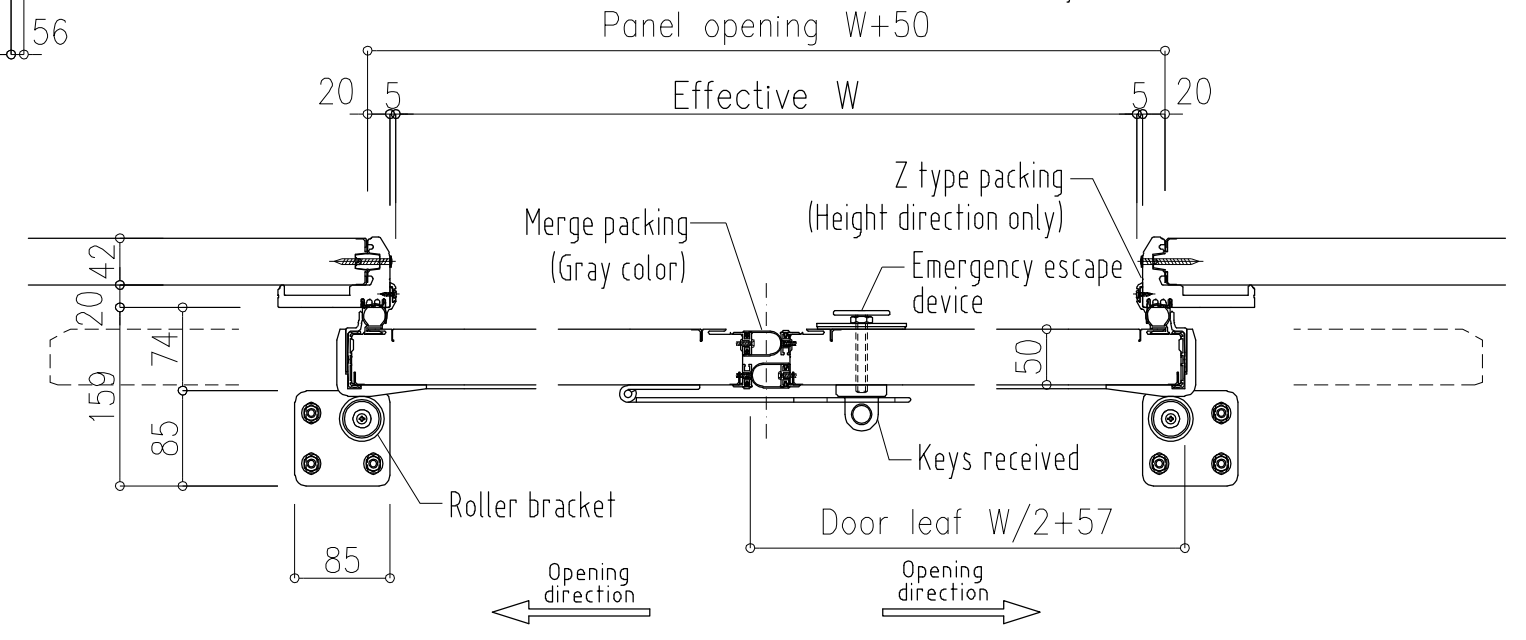
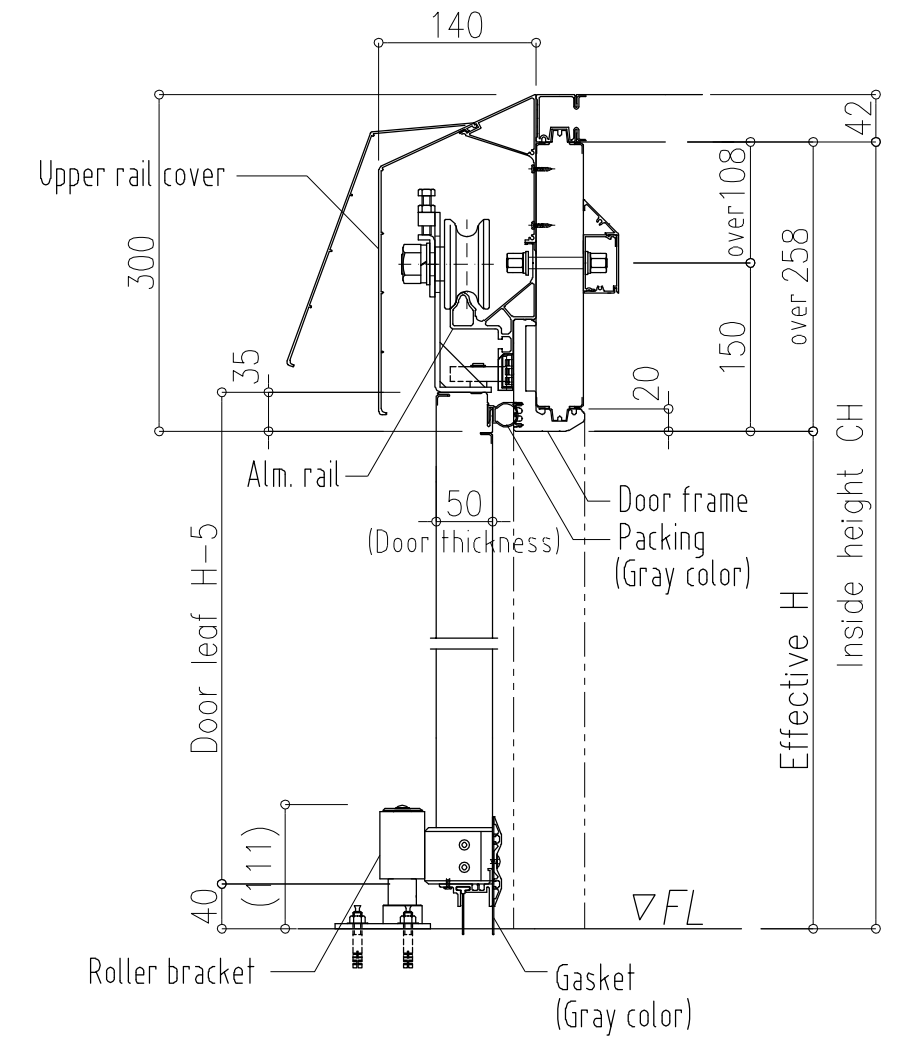
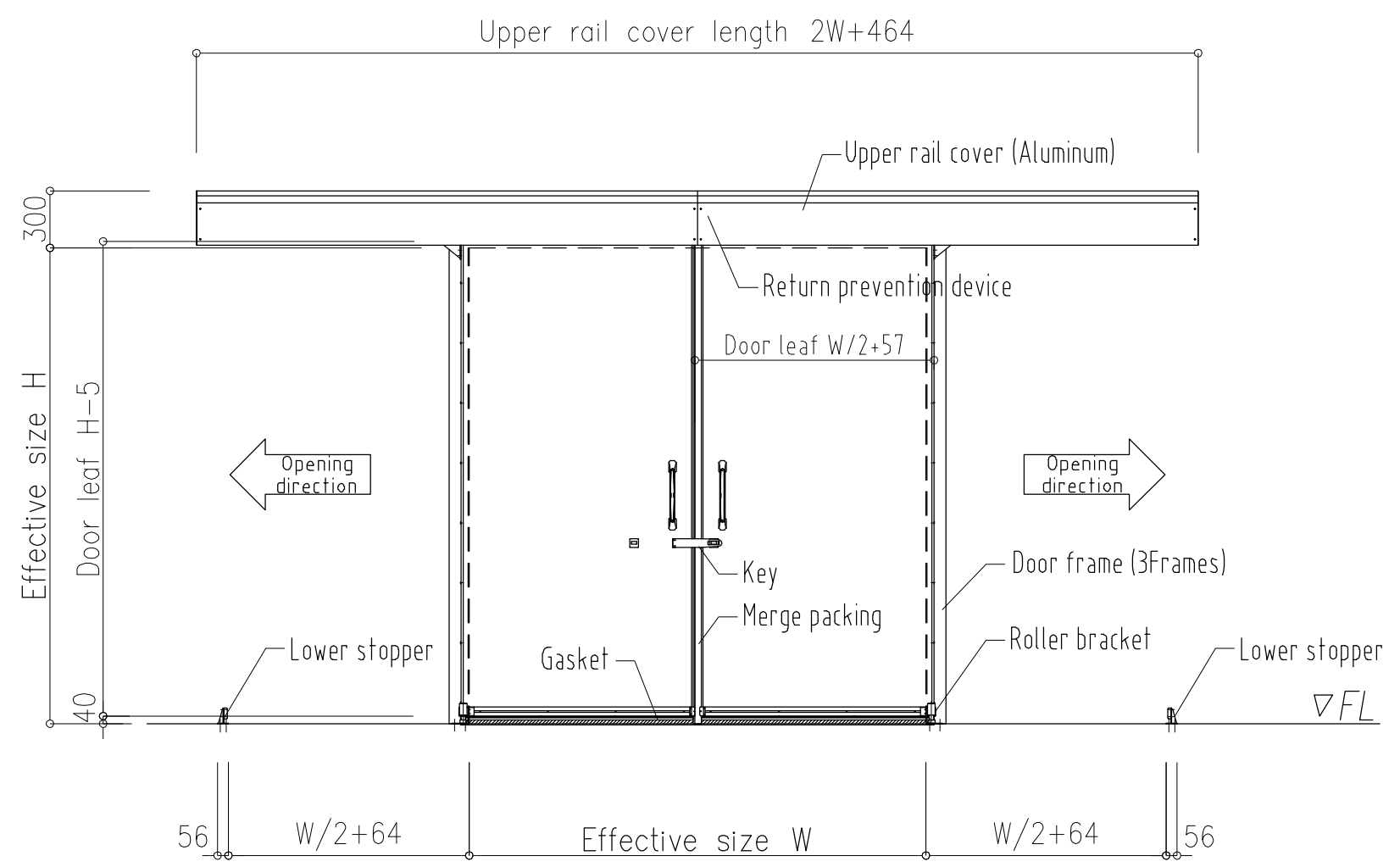
Designation	Push-button switch	Pull switch
Product number	WBST 221 ON	300H / 300CH
Operating Temp. range	-10~+40°C (No freezing, no condensation)	±0~+55°C / -35~+55°C
Switch size	98x60x47.5	285x150x65
Figure		

Option switch (Not allowed in freezer / Condensing environment, Be careful when using at +10°C or less)


Designation	Wireless touch switch	Muzzle sensor	Non contact switch	Magic switch	Large push button switch
Product number	OW-503T (Master unit) OW-503S (Slave unit)	OA-203V	PF-R5	Magic Switch J Magic Switch J Box	FB1W-111Z HW1B-M510B
Amplifier	Wireless controller	Built in	P-20	Built in	
Switch size	194x40x16	221x63x30	120x70x53.5	84.2x84.2x45	76x76x90
Figure	 Amplifier		 Amplifier		
Remark	Battery 3V: AAAx2pcs Amplifier:AC100V5VA	AC100V4VA	AC100V(±10%) 3.0VA Detection distance 0~400mm	AC100V(±10%) 2VA Detection distance 0~500mm	

	Scale	Revise NO.	Orders NO.	Drawing NO.
	A4-1/10			CS-28
Drawing name	VQ linear single sliding door (Type 09) Specification			 日軽/パネルシステム株式会社

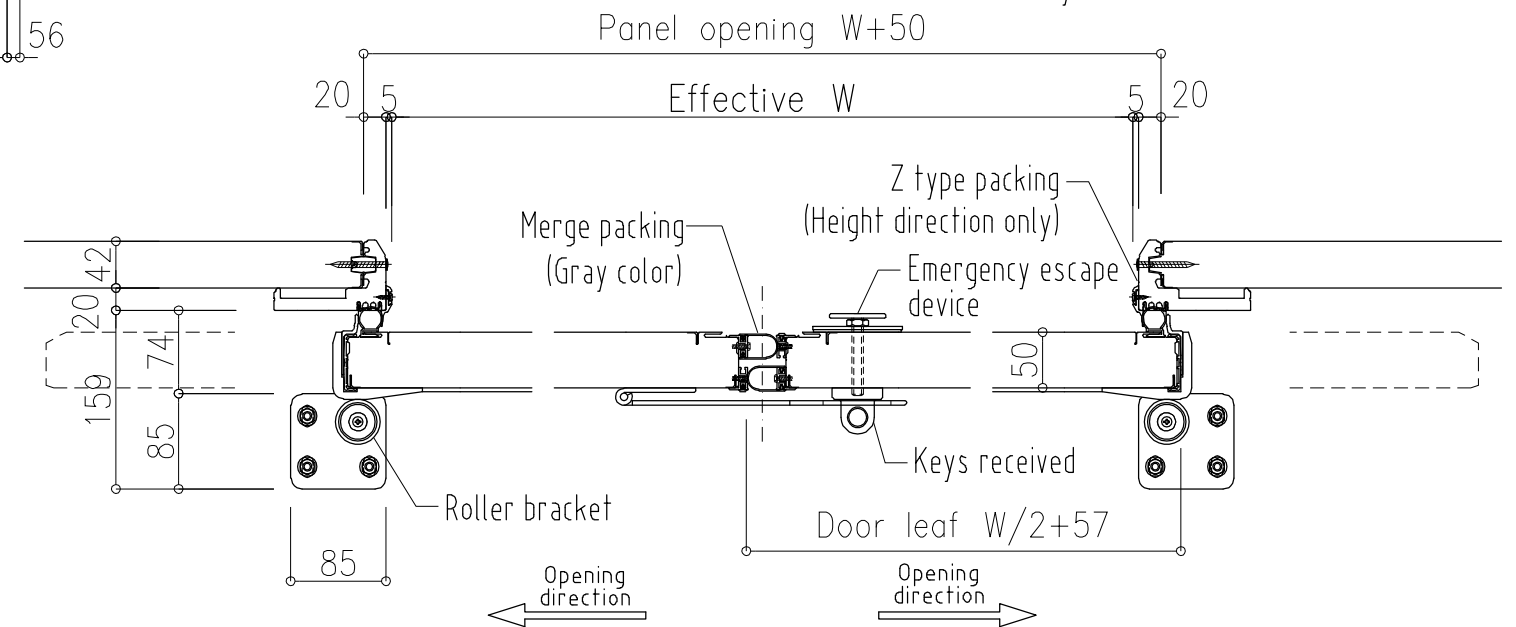
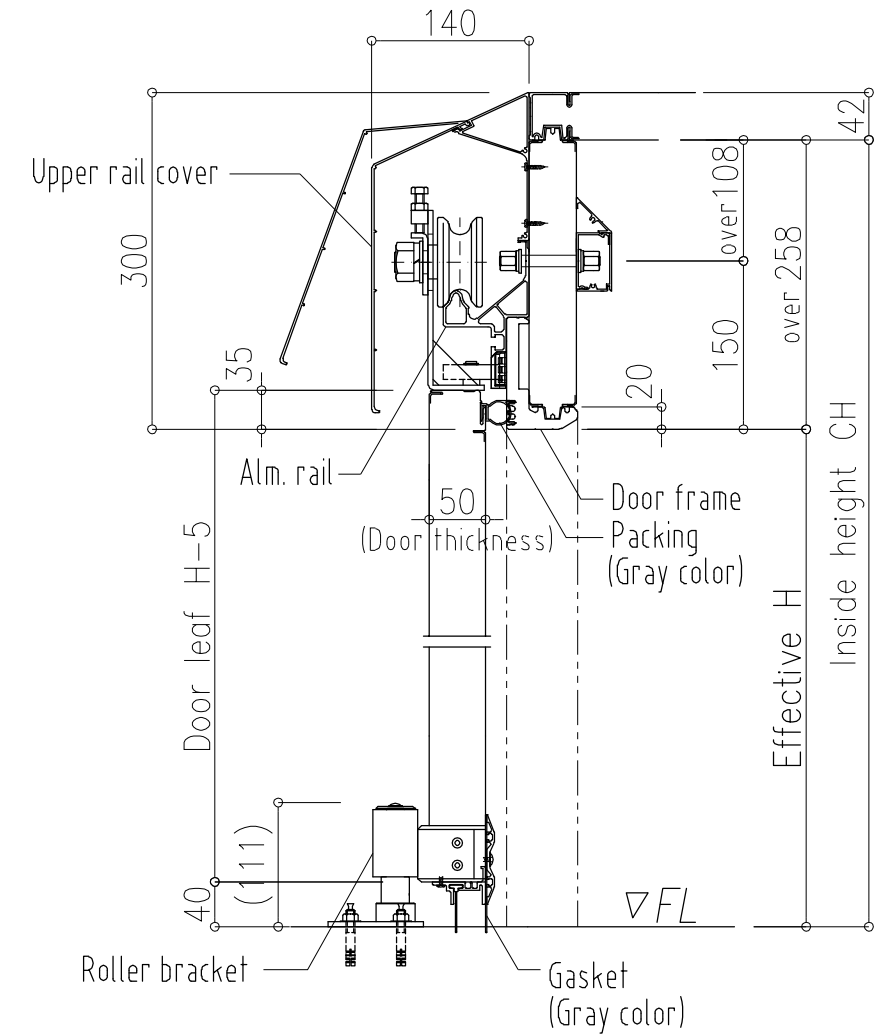
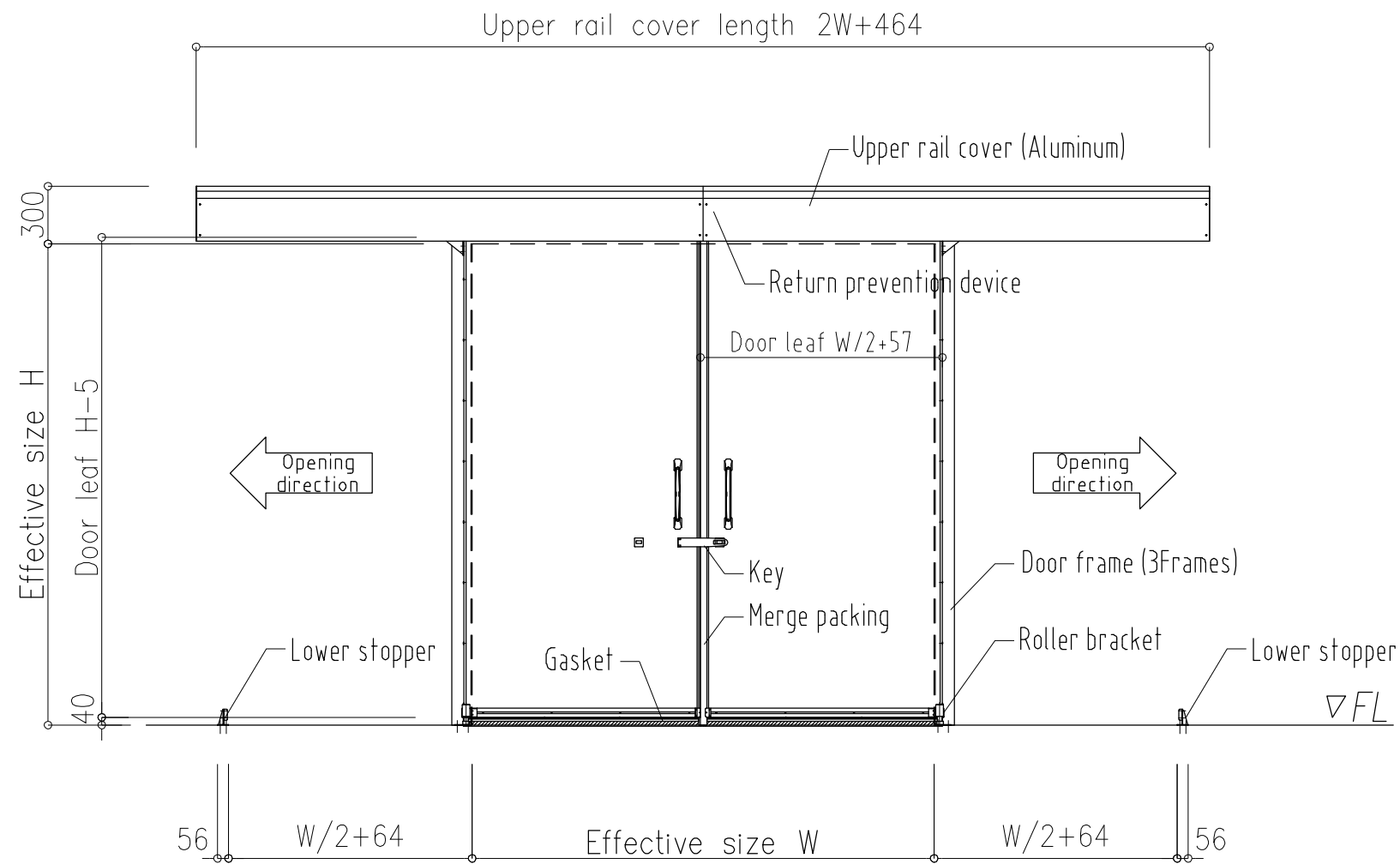
VQ manual double sliding door (Type 09)




	RH type Refrigerator
Door thickness	50 mm
Operating temperature	268K (-5°C)
Component	Rigid polyurethane foam
Surface material	Color steel sheet, Stainless steel
Door frame	High strength foam resin frame
Rail	Aluminum
Lower part of door	Gasket type = 0mm
Opening dimensions (mm)	Maximum effective size: W3200xH3000 mm
	Minimum effective size: W1500xH1500 mm
	W : H ≥ 1 : 1.5
Remarks	Minimum W dimension of 1 door leaf is 750 mm
	<ul style="list-style-type: none"> ● If Left door leaf and Right door leaf have different sizes, It can not be produced ● RH type (42mm), MR type (50mm) is the standard for Wall panels to be installed ● If the distance from Effective Door Height to Ceiling Height is less than 258, the rail cover protrudes to the top (When the mounting wall panel thickness RH type) ● When the door entrance frame is divided in the center (W>2000mm). Please do not overlap the Joint Panel Line and the Joint Door Frame line ● There is also a Door for Freezer specification. Please contact our person in charge

	Scale	Revise NO.	Orders NO.	Drawing NO.
	A4-1/10			CS-29
Drawing name			 日軽パネルシステム株式会社	
VQ manual double sliding door (Type 09)				

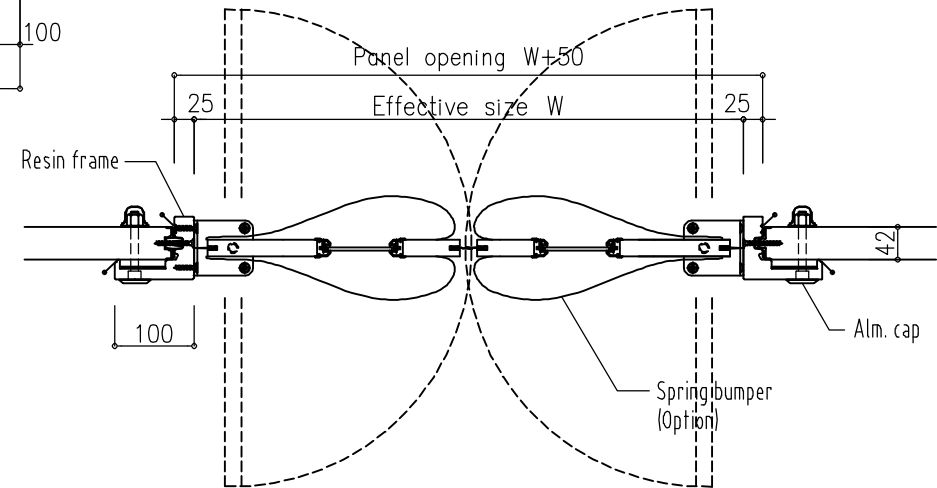
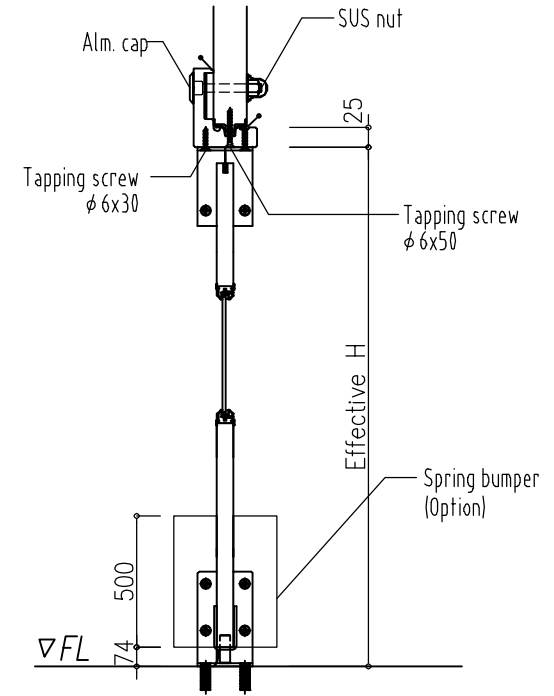
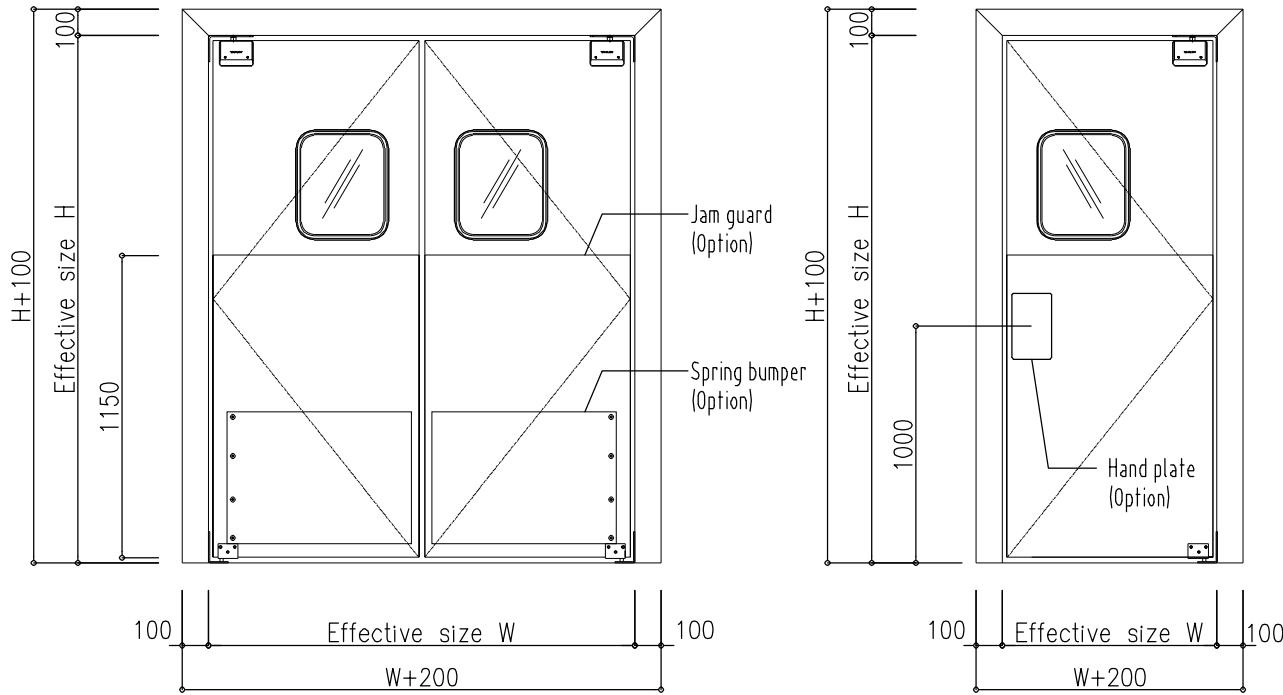
VQ manual double sliding door (Type 09)




	RH type Refrigerator
Door thickness	50 mm
Operating temperature	268K (-5°C)
Component	Rigid polyurethane foam
Surface material	Color steel sheet, Stainless steel
Door frame	High strength foam resin frame
Rail	Aluminum
Lower part of door	Gasket type = 0mm
Opening dimensions (mm)	Maximum effective size: W3200xH3000 mm
	Minimum effective size: W1500xH1500 mm
	W : H ≥ 1 : 1.5
Remarks	Minimum W dimension of 1 door leaf is 750 mm
Remarks	<ul style="list-style-type: none"> ● If Left door leaf and Right door leaf have different sizes, It can not be produced ● RH type (42mm), MR type (50mm) is the standard for Wall panels to be installed ● If the distance from Effective Door Height to Ceiling Height is less than 258, the rail cover protrudes to the top (When the mounting wall panel thickness RH type) ● When the door entrance frame is divided in the center (W>2000mm). Please do not overlap the Joint Panel Line and the Joint Door Frame line ● There is also a Door for Freezer specification. Please contact our person in charge

	Scale	Revise NO.	Orders NO.	Drawing NO.
	A4-1/10			CS-30
Drawing name			 日軽パネルシステム株式会社	
VQ manual double sliding door (Type 09)				

VQ both side swing door

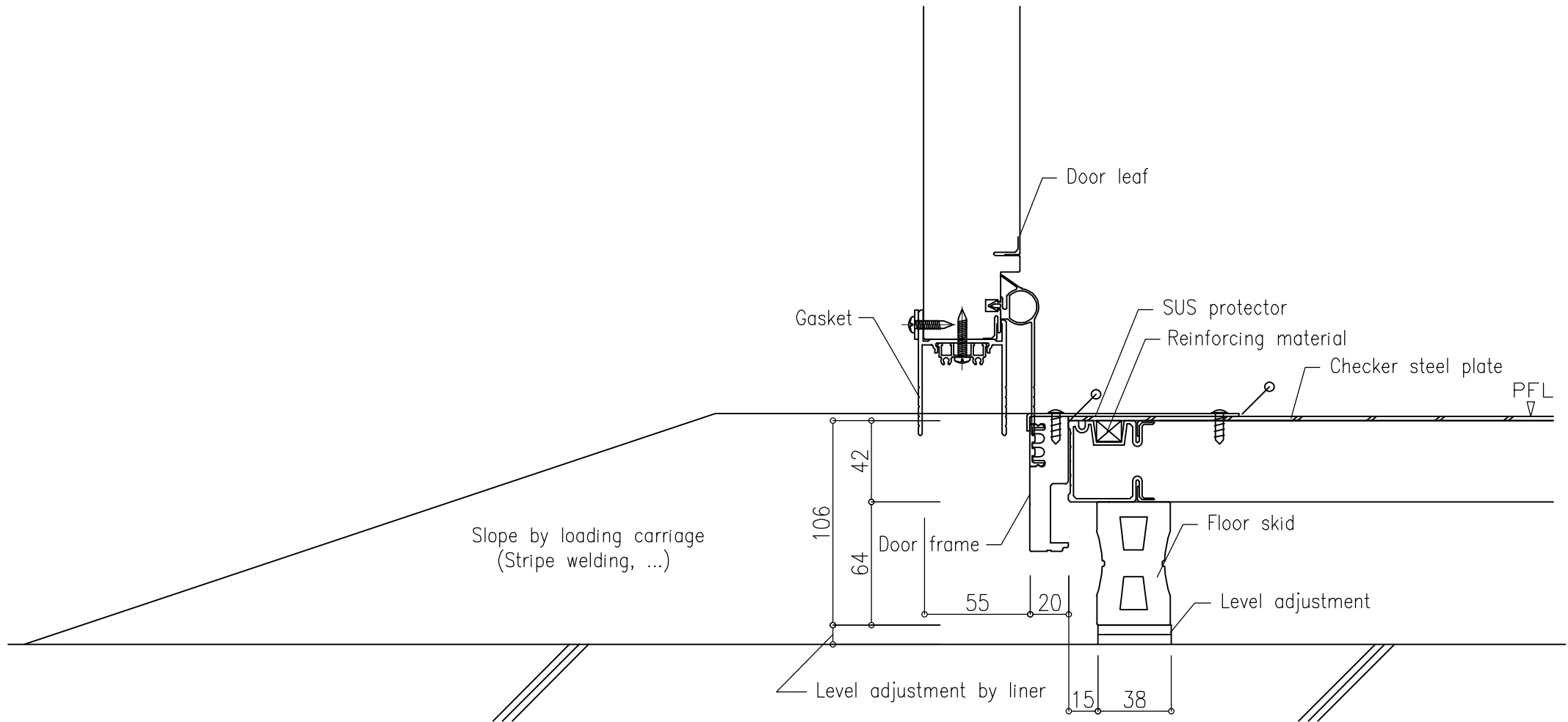


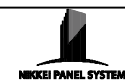
Standard size	Single Door	W610 / 710 / 765 / 815 / 915 / 1015 x H2005
	Double Door	W1215 / 1420 / 1520 / 1620 / 1825 / 2030 x H2005
Frame material	Resin Frame	
Option case	Window, color cloth, bumper strip	
	Hand plate, spring bumper, base plate	
	Jam guard, Louver	
Remark	<ul style="list-style-type: none"> Without standard size, please contact. Besides the standard type (SCP), there are other types : Airtight(SCG), lightweight(LWP), aluminium(AL), ECO swing, Heater Insulation(FCG)... Please contact our person in charge. 	

	Scale	Revise NO.	Orders NO.	Drawing NO.
	A4-1/10			CS-31
Drawing name			日軽パネルシステム株式会社	
VO both side swing door (BS door)				

VQ door - Lower part detail view 2

3 4 Frames (Mis-alignment type) - With Floor Panel



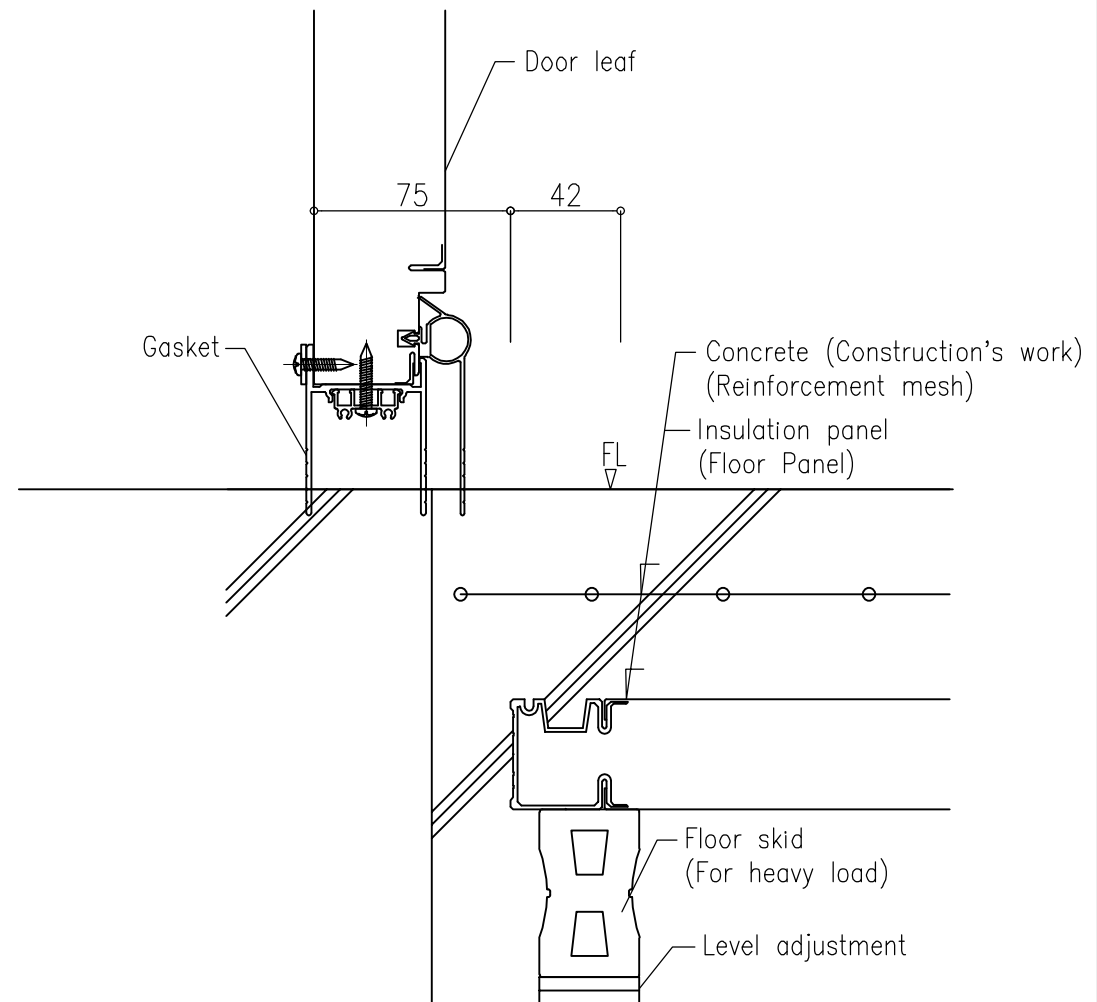
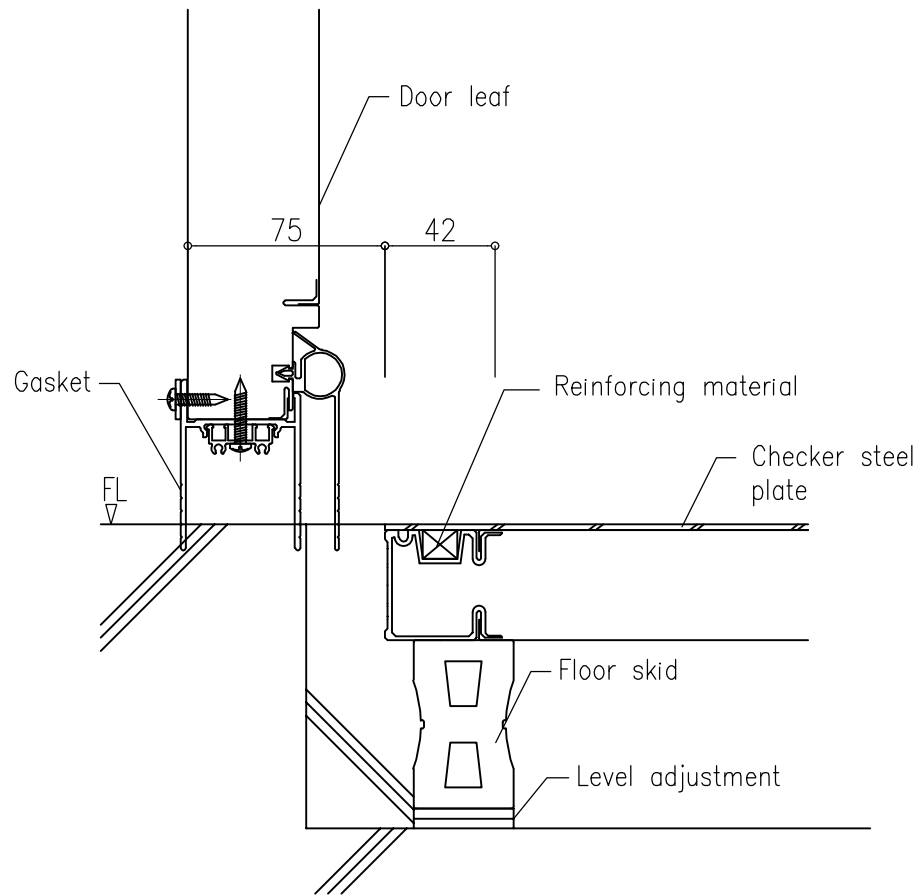
	Scale	Revise NO.	Orders NO.	Drawing NO.
	A4-1/3			CS-33
Drawing name			日軽パネルシステム株式会社	
VQ door - Under part detail view 2				

 Caulking


VQ door - Lower part detail view 3

④ 3 Frames type - Floor Panel with another additional surface material (Refrigerator)

⑤ 3 Frames type - Floor Panel embedded Floor surface

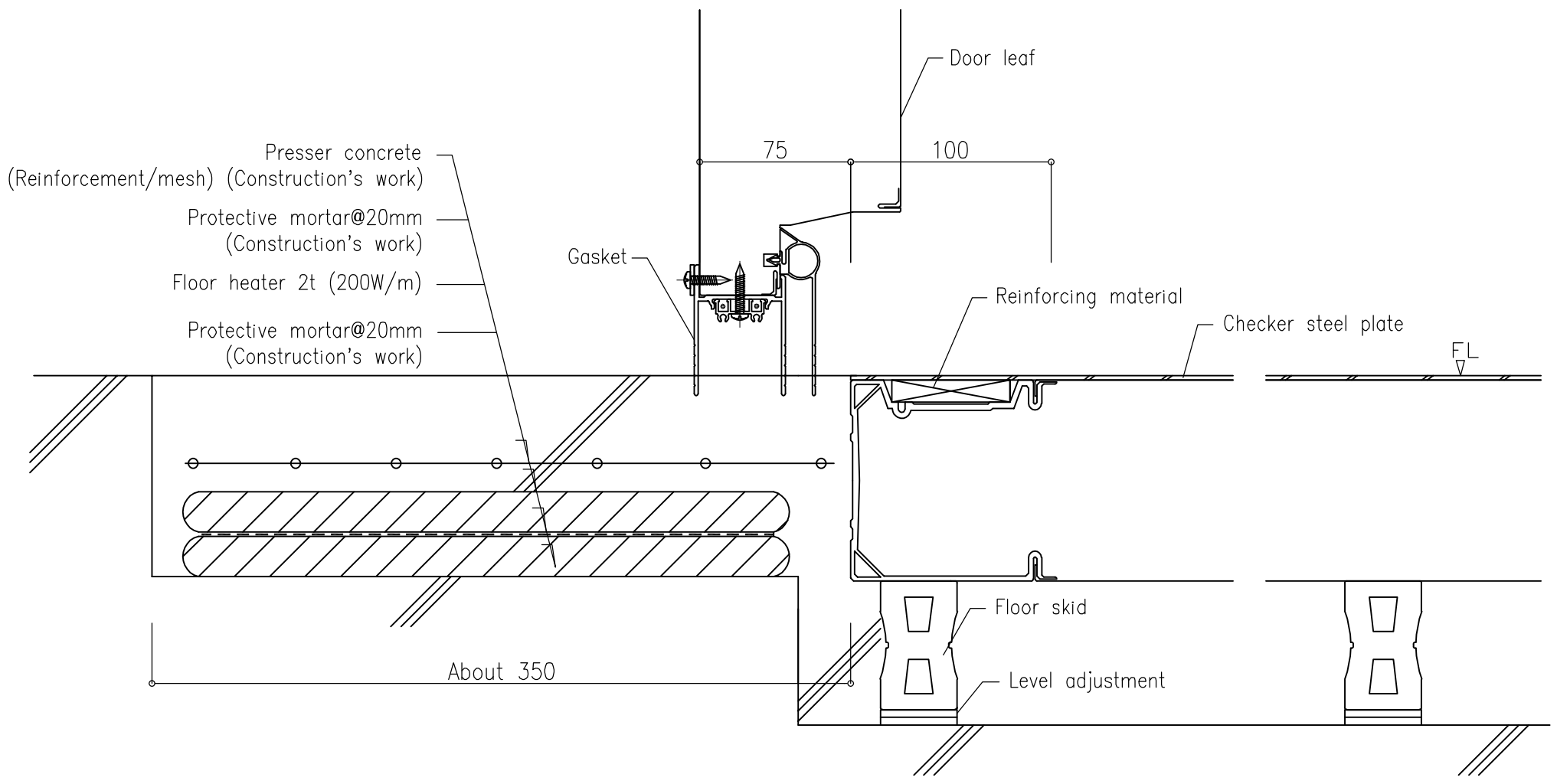


 Caulking

	Scale	Revise NO.	Orders NO.	Drawing NO.
	A4-1/3	_____	_____	CS-34
Drawing name			日軽パネルシステム株式会社	
VQ door - Under part detail view 3				

VQ door - Lower part detail view 4

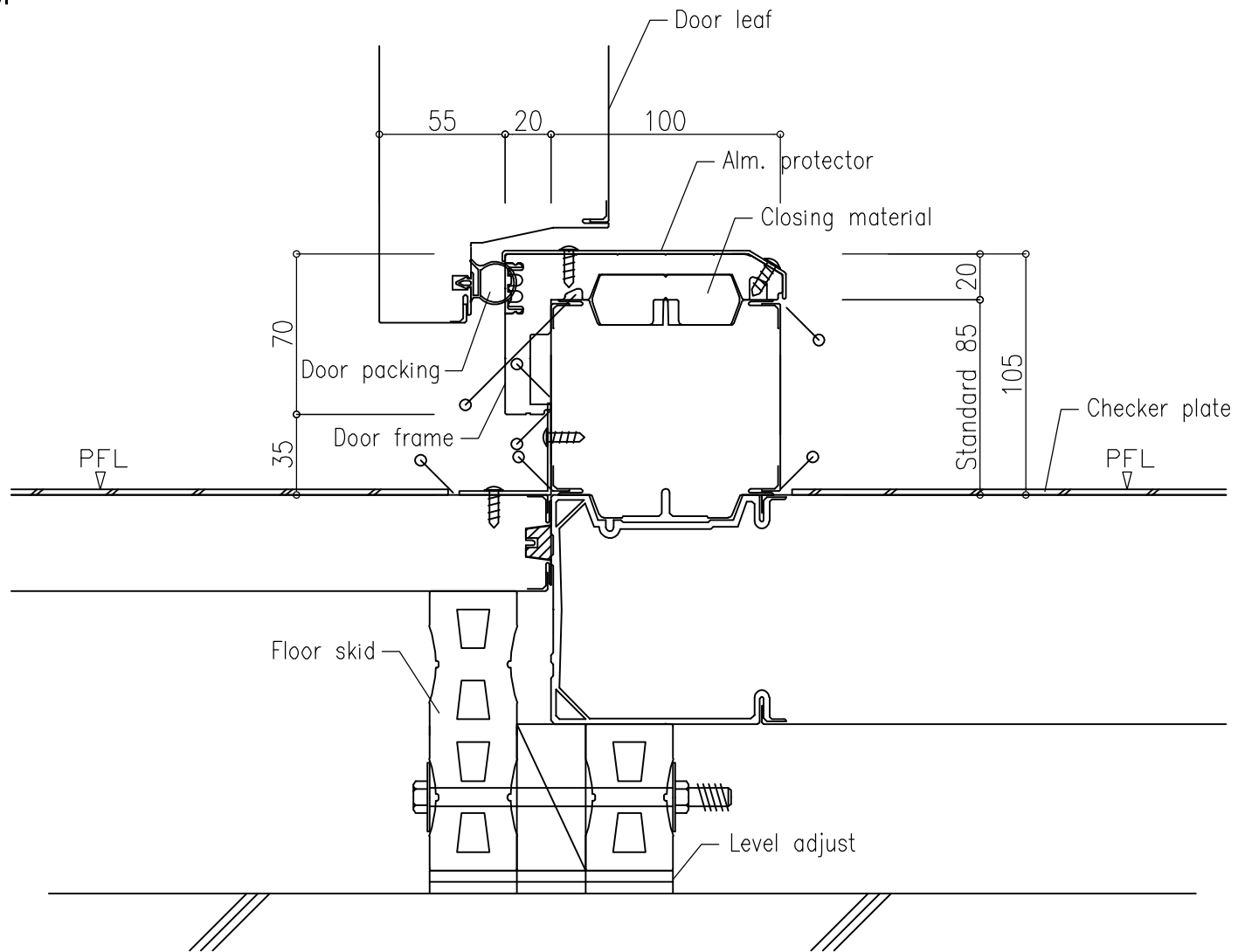
6 3 Frames type - Floor Panel with another additional surface material (Freezer room)



Caulking

	Scale	Revise NO.	Orders NO.	Drawing NO.
	A4-1/3	_____	_____	CS-35
Drawing name			日軽パネルシステム株式会社	
VQ door - Under part detail view 4				

7 VQ door 4 Frames - Docking type with Floor Panel



Caulking

	Scale	Revise NO.	Orders NO.	Drawing NO.
	A4-1/3			CS-36
Drawing name			日軽パネルシステム株式会社	
VQ door - Under part detail view 5				