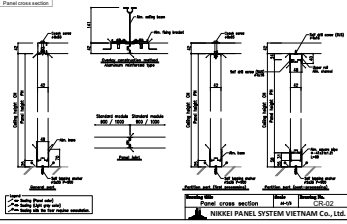
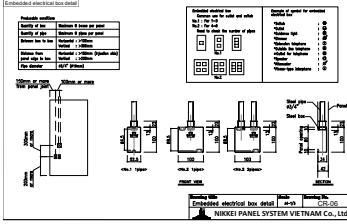
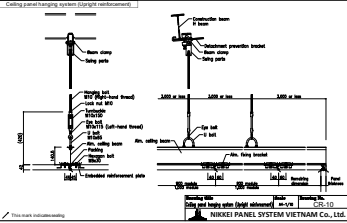
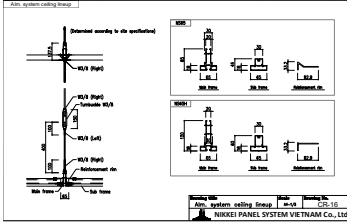
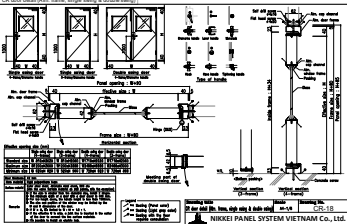
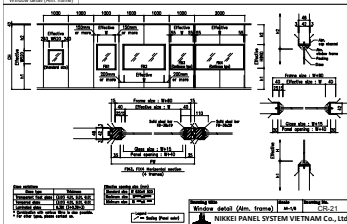


	Drawing No.	Drawing title	Drawing sample	
General detail	CR-01	Panel specifications / Panel joint detail	 <p>CR-02</p>  <p>CR-06</p>  <p>CR-10</p>  <p>CR-16</p>	
	CR-02	Panel cross section		
	CR-03	Various details of aluminum base		
	CR-04	Horizontal section detail of wall panel		
	CR-05	Reference panel layout		
	CR-06	Embedded electrical box detail		
	CR-07	Hanging detail (Slab / Steel beam)		
	CR-08	Hanging detail (H beam)		
	CR-09	Hanging detail (Secondary beam)		
	CR-10	Ceiling panel hanging system (Upright reinforcement)		
	CR-11	Ceiling reinforcement detail (Upright reinforcement)		
	CR-12	Ceiling reinforcement other types (1)		
	CR-13	Ceiling reinforcement other types (2)		
	CR-14	Ceiling panel various detail		
	CR-15	Alm. system ceiling overview figure (NS65)		
	CR-16	Alm. system ceiling lineup		
	CR-17	Blank panel detail (42t type)		
Door detail	CR-18	CR door detail (Alm. frame, single swing & double swing)	 <p>CR-18</p>  <p>CR-21</p>	
	CR-19	CR door detail (Alm. frame, removable panel)		
	CR-20	CR door detail (Alm. frame, inspection door)		
	CR-21	Window detail (Alm. frame)		
	CR-22	Flat door detail (Alm. frame, single swing & double swing)		

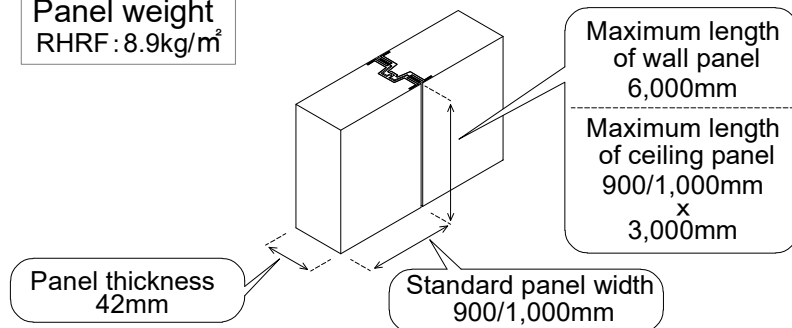
## Panel specifications

### Non-fluorocarbon insulation panel

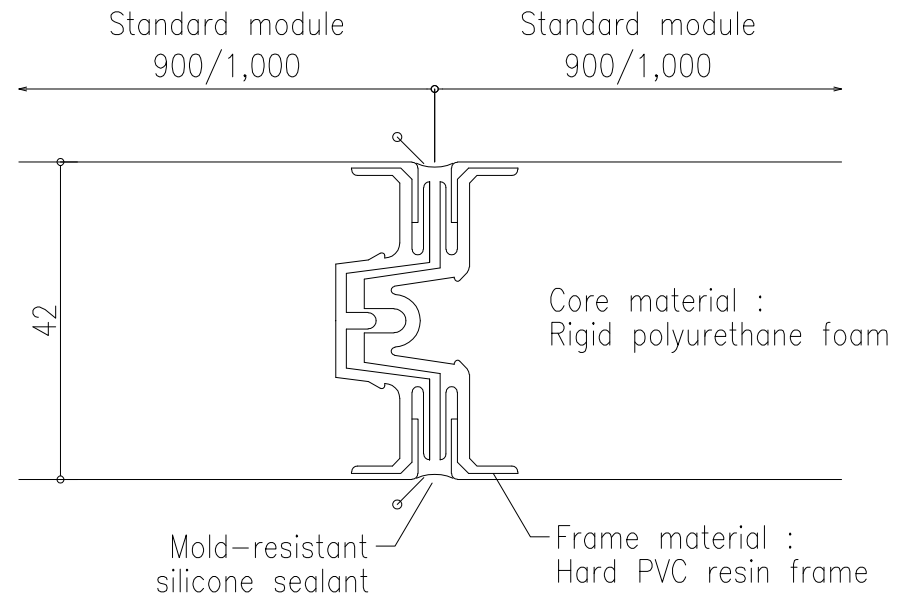
Model	<b>RH (42t)</b>
Joint type	Resin frame fitting type
Surface material (color)	Color steel sheet (White gray / Ivory / White) Antistatic steel sheet (White gray / Ivory) SUS 304 No.4
Joint seal	Mold-resistant silicone sealant deoxime type
Core material	Rigid polyurethane foam
Heat transfer coefficient (General section)	0.50 W/m <sup>2</sup> ·K (0.43 kcal/m <sup>2</sup> ·h°C)
Remarks	Outlet box can be embedded in the panel


### 【Panel dimensions / weight】


Panel weight  
RHRF : 8.9kg/m<sup>2</sup>



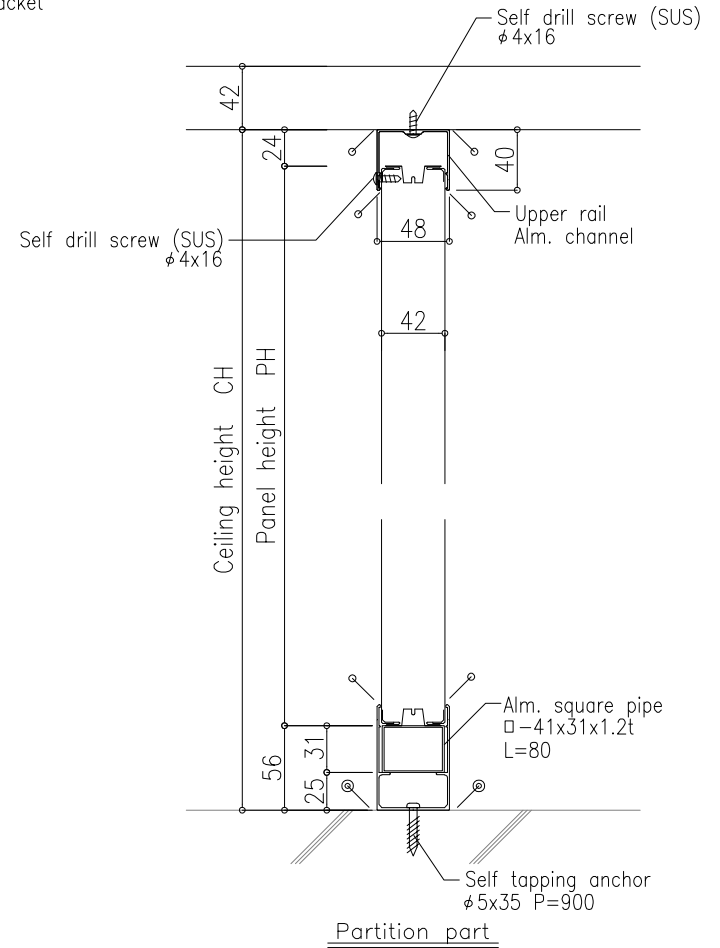
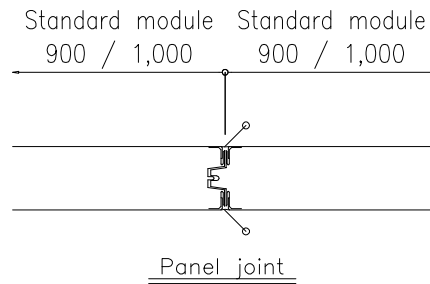
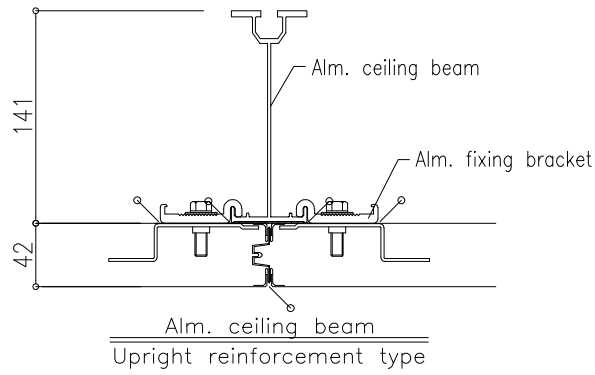
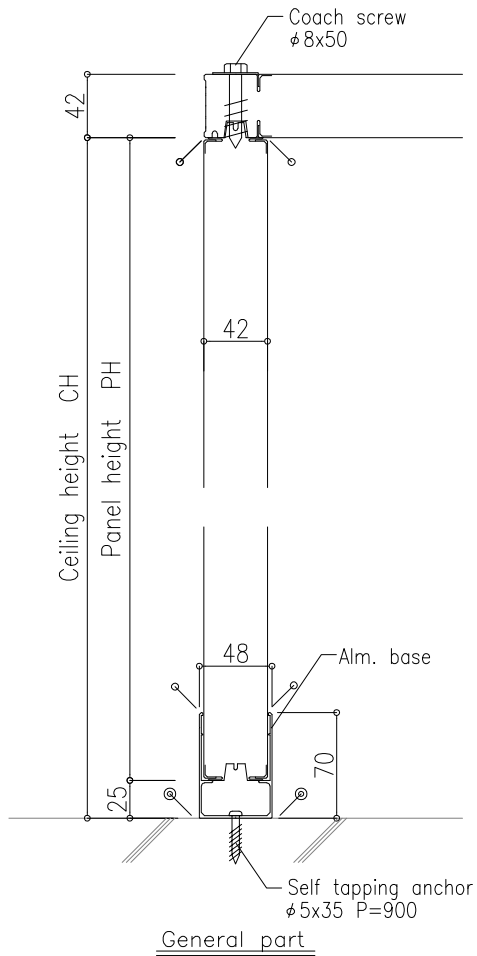
## Panel joint detail



 This mark indicates sealing


Drawing title Panel specifications/Panel joint detail	Scale non scale	Drawing No. <b>CR-01</b>
 <b>NIKKEI PANEL SYSTEM VIETNAM Co., Ltd.</b>		

**Panel cross section**



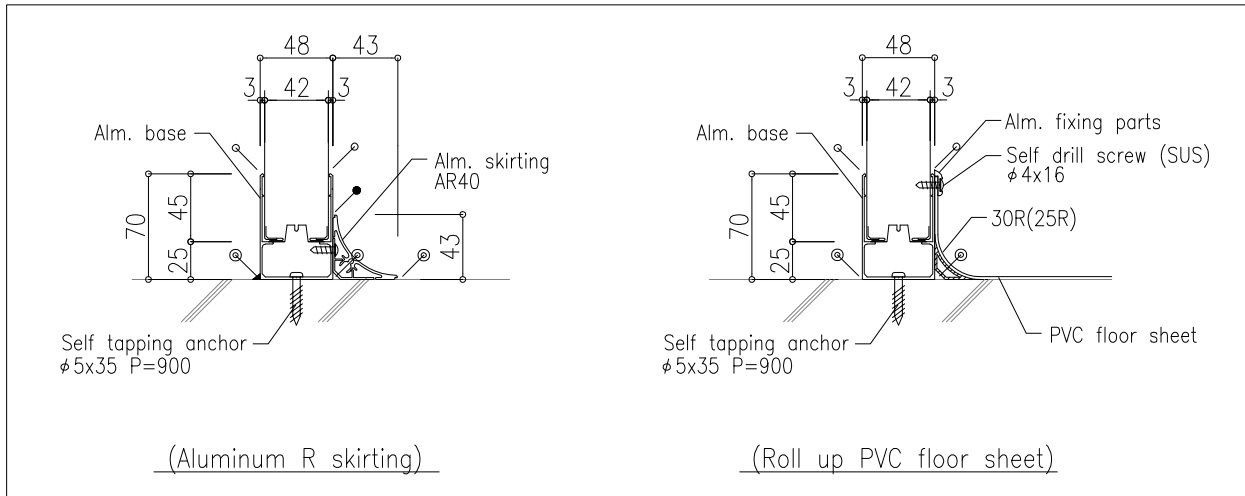
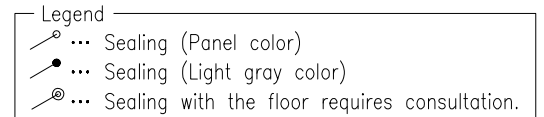
**Legend**

- ... Sealing (Panel color)
- ... Sealing (Light gray color)
- ⊙ ... Sealing with the floor requires consultation.

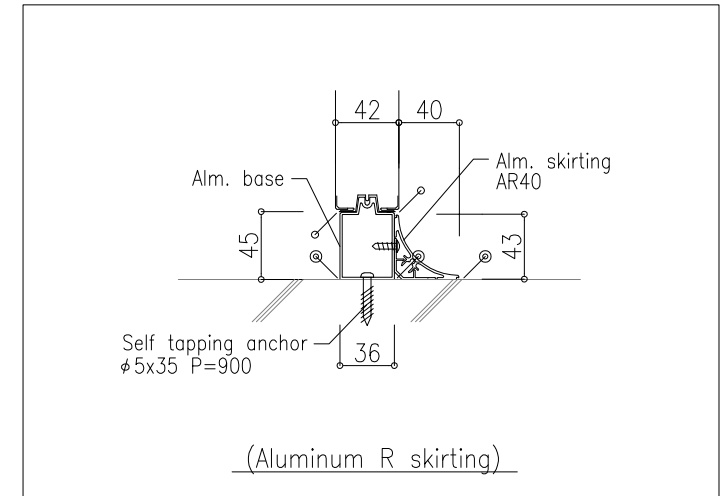
<b>Drawing title</b> Panel cross section	<b>Scale</b> A4-1/5	<b>Drawing No.</b> <b>CR-02</b>
 <b>NIKKEI PANEL SYSTEM VIETNAM Co., Ltd.</b>		

## Various details of aluminum base

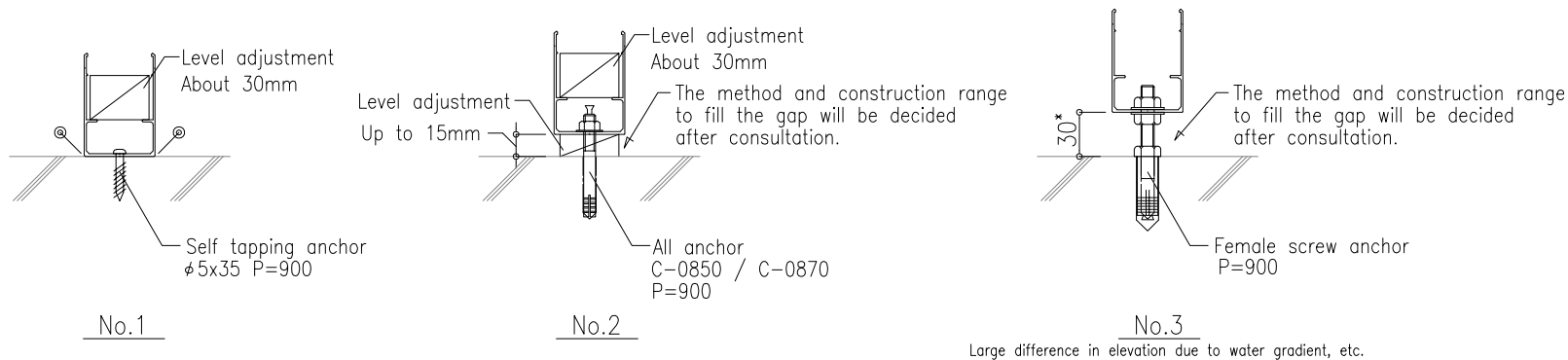
- \* Specifications and construction range of PVC floor sheet (chamfer strip) will be decided after consultation.
- \* Floor level (horizontal) should be within  $\pm 15\text{mm}$ .
- \* If there is more than  $\pm 15$  or there is a water gradient, the specification will be decided after consultation.



Protruded baseboard type




Retracted baseboard type



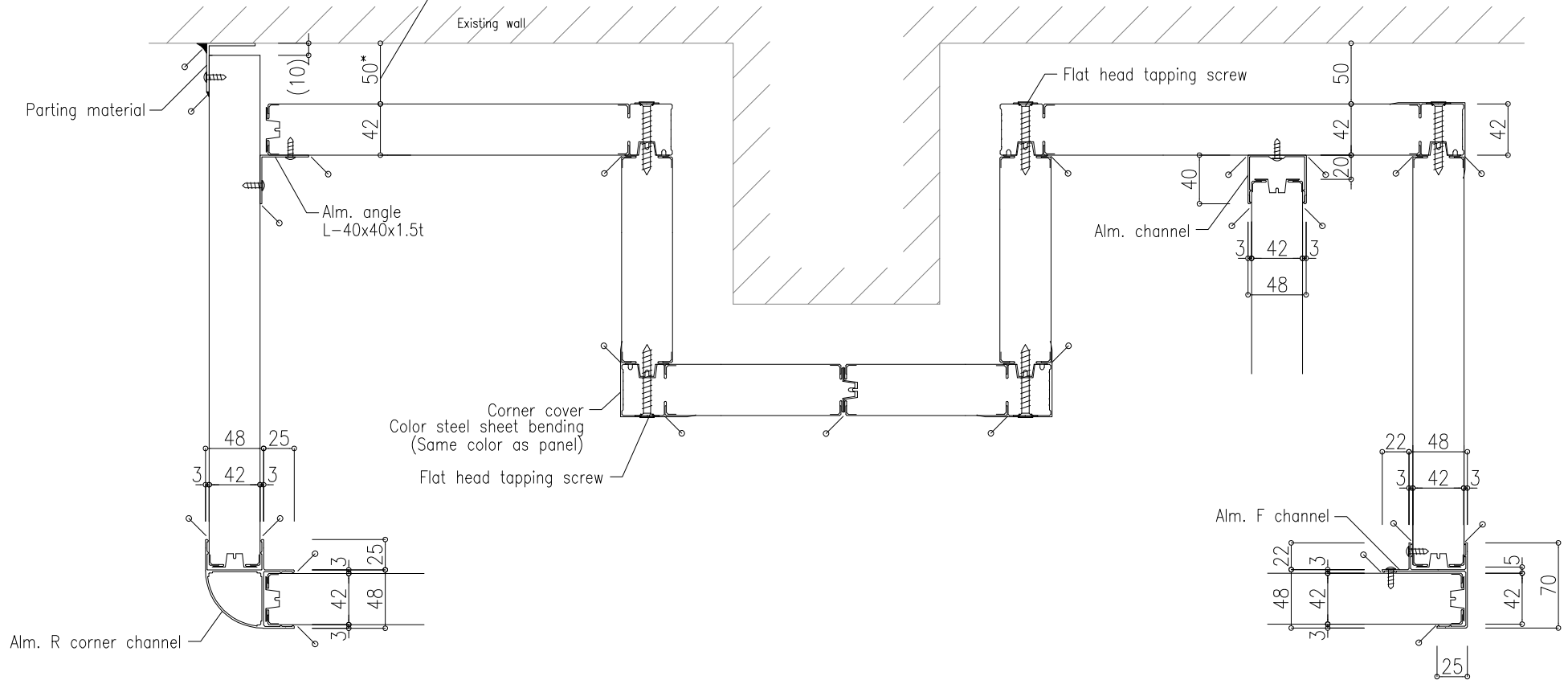
### Anchor specification

- Level difference within  $\pm 15\text{mm}$  : Self tapping anchor or All anchor  $\rightarrow$  No.1 or No.2
- Level difference  $\pm 15\text{mm}$  or more : All anchor or Female screw anchor  $\rightarrow$  No.2 or No.3
- The method and construction range to fill the gap between No.2 and No.3 will be decided after consultation.

<b>Drawing title</b> Various details of aluminum base	<b>Scale</b> A4-1/5	<b>Drawing No.</b> <b>CR-03</b>
 <b>NIKKAI PANEL SYSTEM VIETNAM Co., Ltd.</b>		

# Horizontal section detail of wall panel

Clearance standard with existing wall is 50mm.  
 In order to make it 50mm or less, it's necessary to check the vertical accuracy of the existing wall and the finishing accuracy of the wall and floor.



Legend	
	Sealing (Panel color)
	Sealing (Light gray color)

<b>Drawing title</b> Horizontal section detail of wall panel	<b>Scale</b> A4-1/5	<b>Drawing No.</b> <b>CR-04</b>
---	------------------------	------------------------------------

\* Details of corners and partition edges will be decided after consultation.



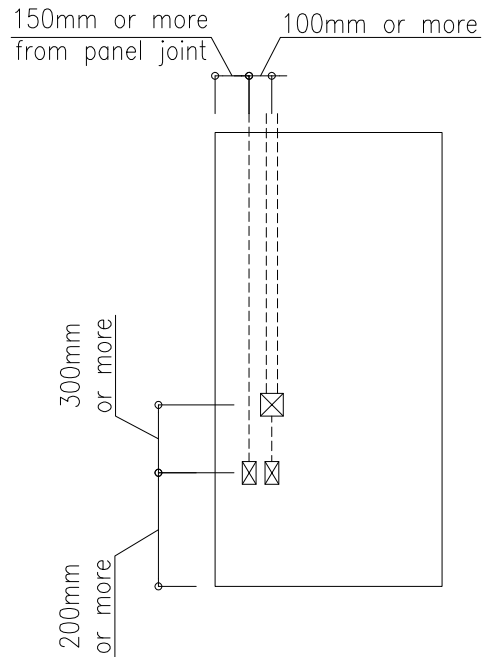
**NIKKEI PANEL SYSTEM VIETNAM Co., Ltd.**



# Embedded electrical box detail

Producible conditions

Quantity of box	Maximum 8 boxes per panel
Quantity of pipe	Maximum 8 pipes per panel
Between box to box	Horizontal : >100mm Vertical : >300mm
Distance from panel edge to box	Horizontal : >150mm (Injection side) Vertical : >200mm
Pipe diameter	ø3/4" (ø19mm)



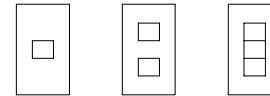
Embedded electrical box

Common use for outlet and switch

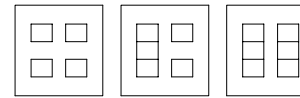
No.1 : For 1~3

No.2 : For 4~6

Need to check the number of pipes



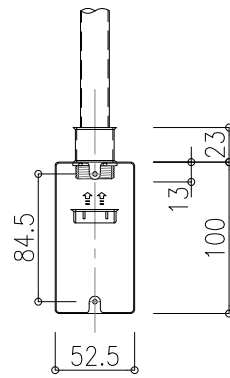
No.1



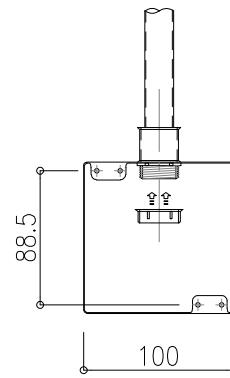
No.2

Example of symbol for embedded electrical box

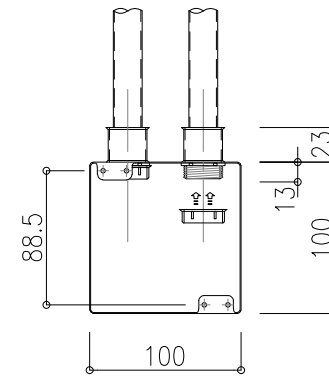
- \*Switch : ●
- \*Outlet : ⊕
- \*Guidance light : ⊗
- \*Dimmer : ⊙
- \*Extension telephone : ⊕
- \*Outside line telephone : ⊕
- \*Outlet for telephone : ⊕
- \*Speaker : ⊗
- \*Attenuator : ⊗
- \*Phone-type interphone : ⊕



<No.1 1pipe>

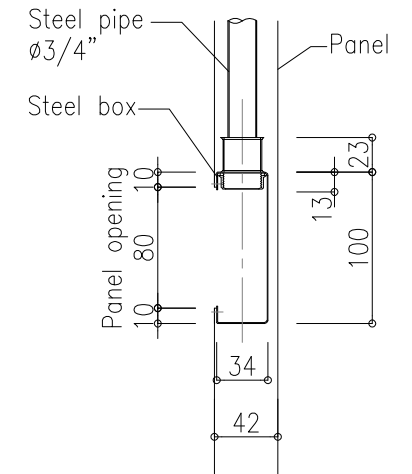


<No.2 1pipe>



<No.2 2pipes>

FRONT VIEW



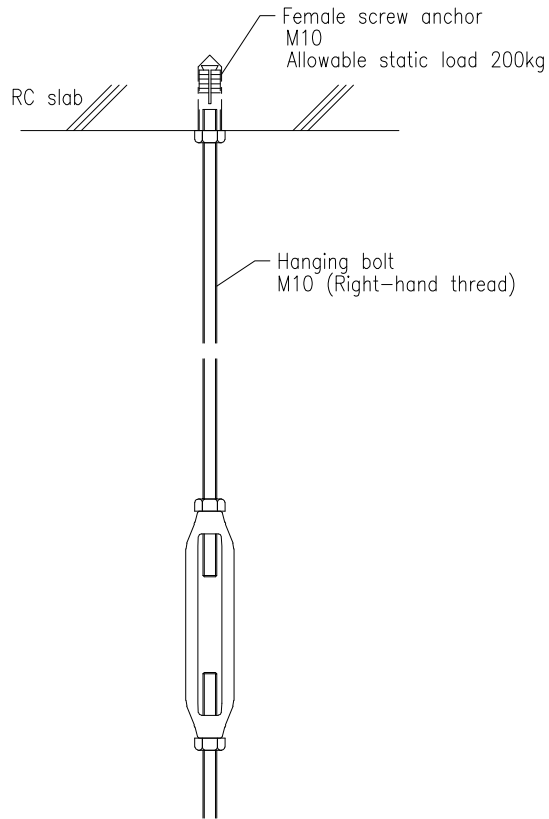
SECTION

Drawing title	Scale	Drawing No.
Embedded electrical box detail	A4-1/5	CR-06

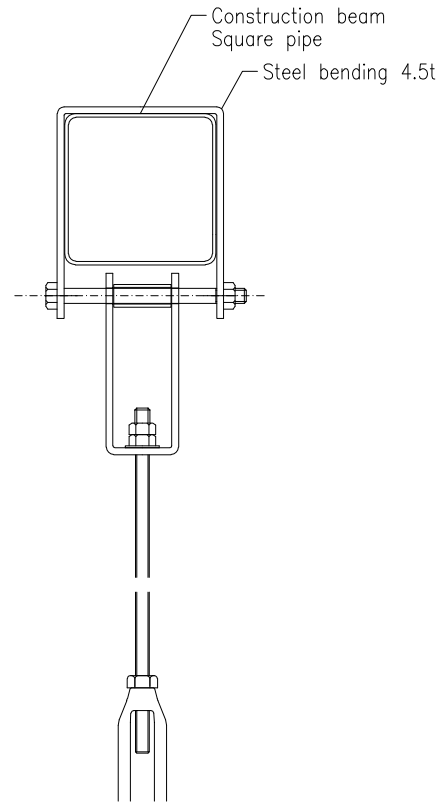


**NIKKEI PANEL SYSTEM VIETNAM Co., Ltd.**

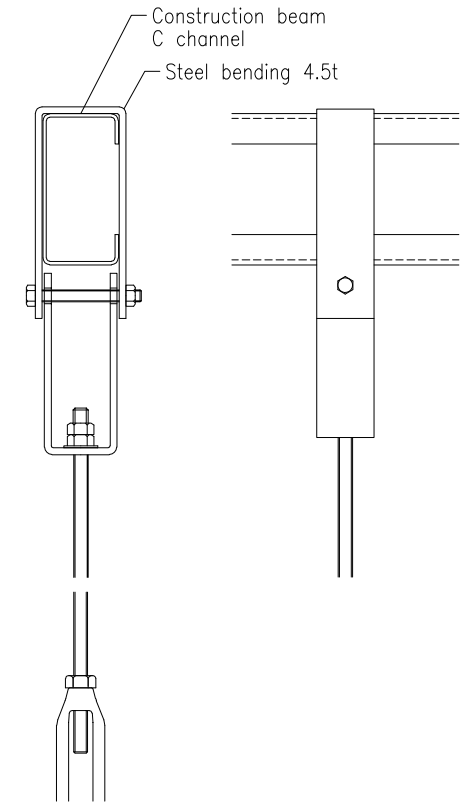
## Hanging detail (Slab / Steel beam)



For slab



For square pipe



For C channel

### Supplementary explanation

1. The pitch of the hanging bolts should basically be 3000 mm or less.  
(Only the own weight of the ceiling panel is considered.)  
If any other load is applied, please consult us.
2. When constructing a room with ceiling panels and wall panels, hanging bolts are always required when the ceiling beam length exceeds 4500 mm.
3. Our standard for the hanging bolt is M10.  
W3/8 can also be prepared.  
For other special specifications, please contact us.

### Drawing title

Hanging detail (Slab / Steel beam)

### Scale

A4-1/5

### Drawing No.

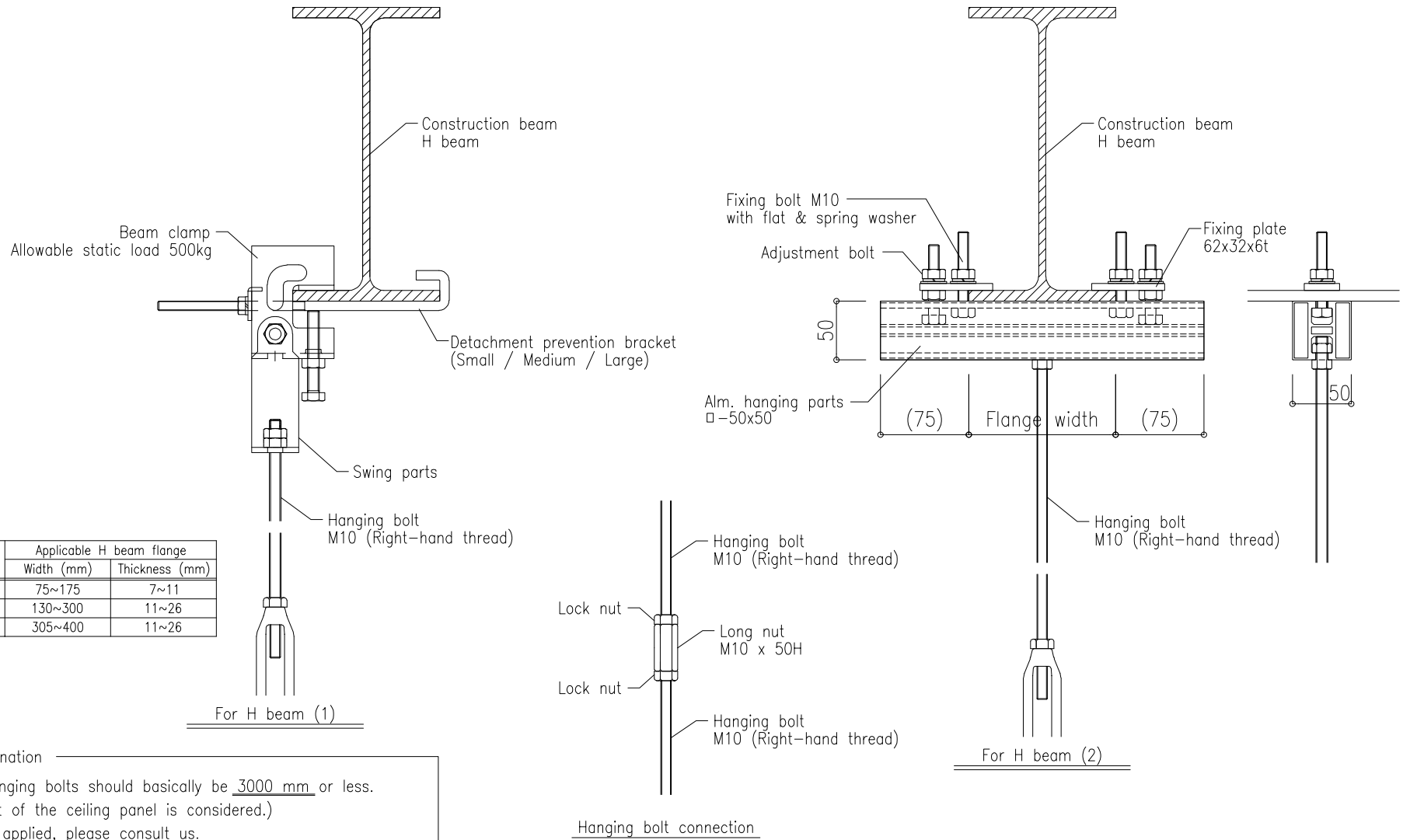
CR-07



**NIKKEI PANEL SYSTEM VIETNAM Co., Ltd.**



## Hanging detail (H beam)



Detachment prevention bracket size	Applicable H beam flange	
	Width (mm)	Thickness (mm)
Small	75~175	7~11
Medium	130~300	11~26
Large	305~400	11~26

### Supplementary explanation

- The pitch of the hanging bolts should basically be 3000 mm or less.  
(Only the own weight of the ceiling panel is considered.)  
If any other load is applied, please consult us.
- When constructing a room with ceiling panels and wall panels, hanging bolts are always required when the ceiling beam length exceeds 4500 mm.
- Our standard for the hanging bolt is M10.  
W3/8 can also be prepared.  
For other special specifications, please contact us.

Drawing title

Hanging detail (H beam)

Scale

A4-1/5

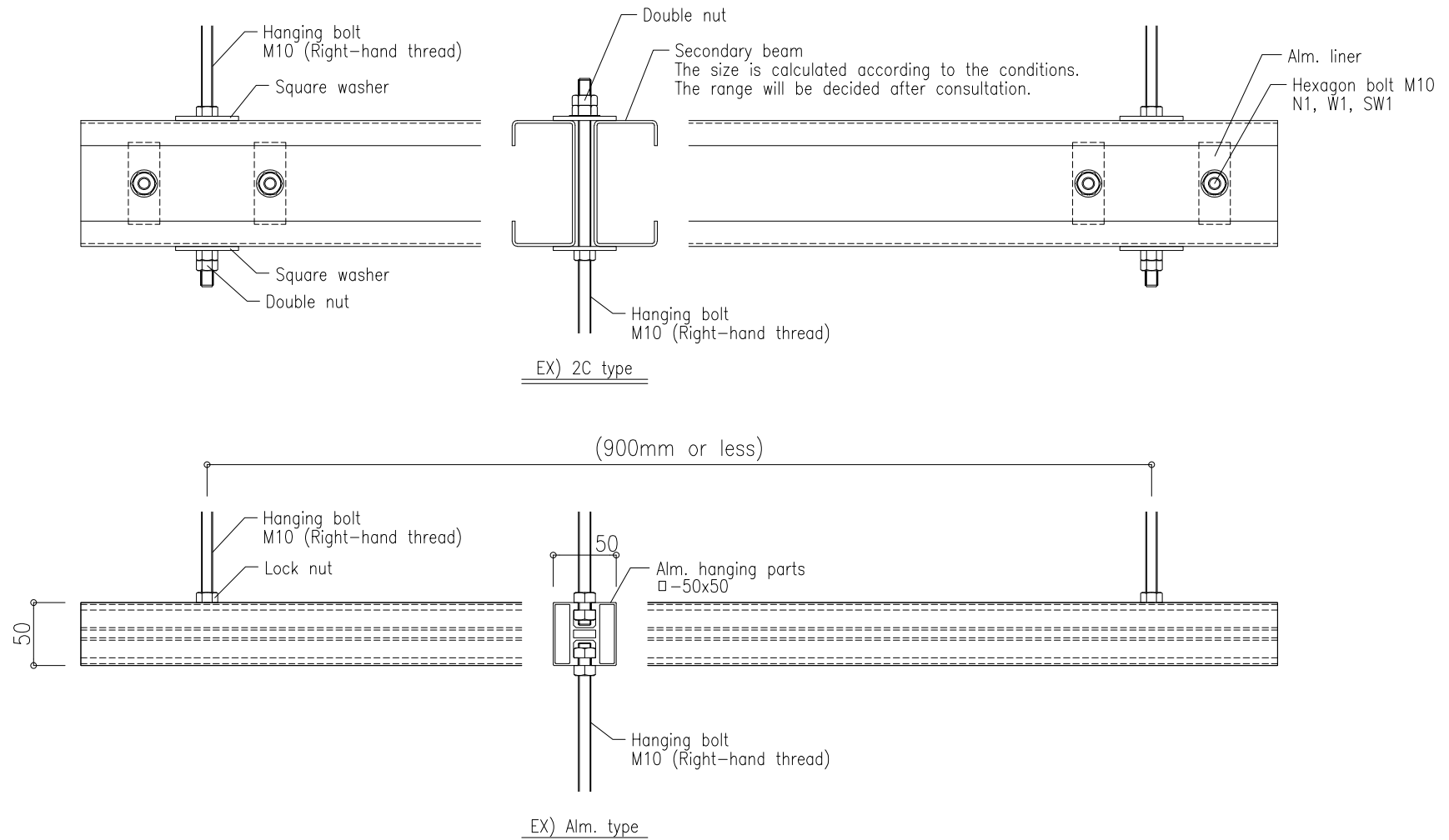
Drawing No.

CR-08



**NIKKEI PANEL SYSTEM VIETNAM Co., Ltd.**

## Hanging detail (Secondary beam)



\* The hanging bolt pitch must be 900mm or less.

Secondary beam is used when it's not possible to hang it directly due to the position of construction beams or the equipment inside the ceiling.

The range in which the secondary beam is used will be decided after consultation.

Drawing title

Hanging detail (Secondary beam)

Scale

A4-1/5

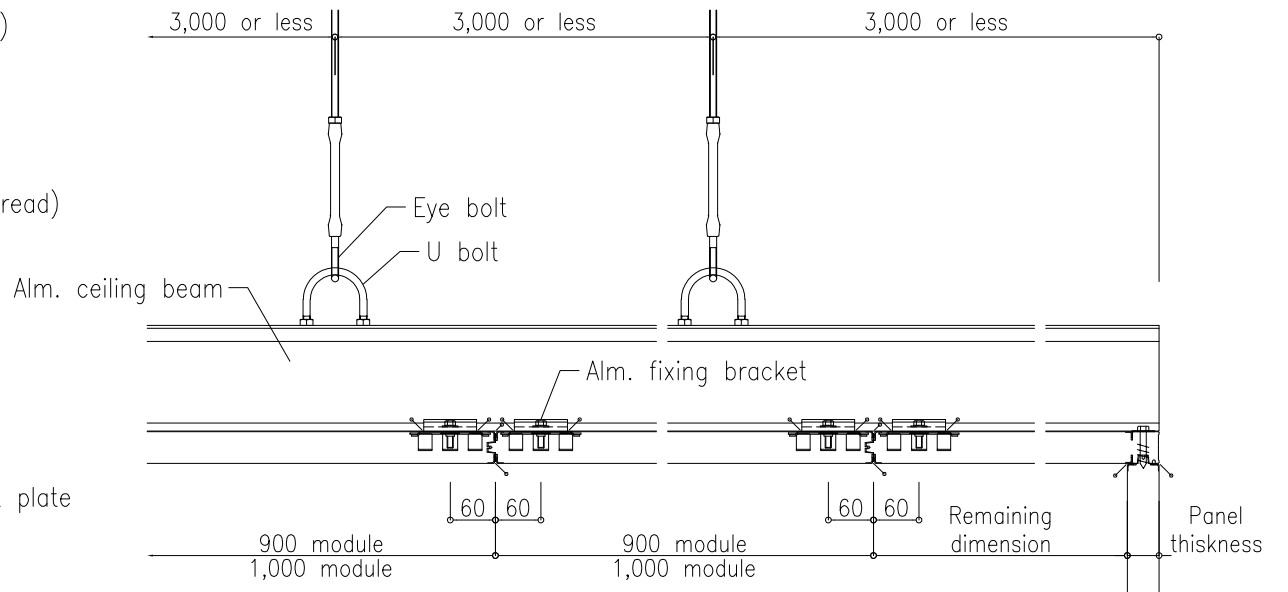
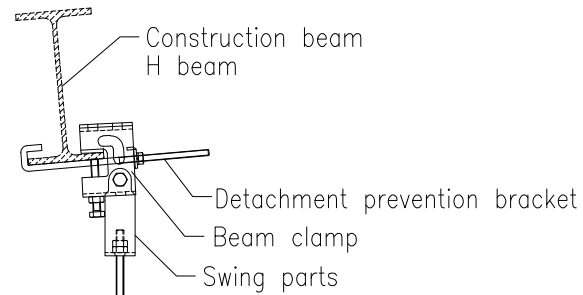
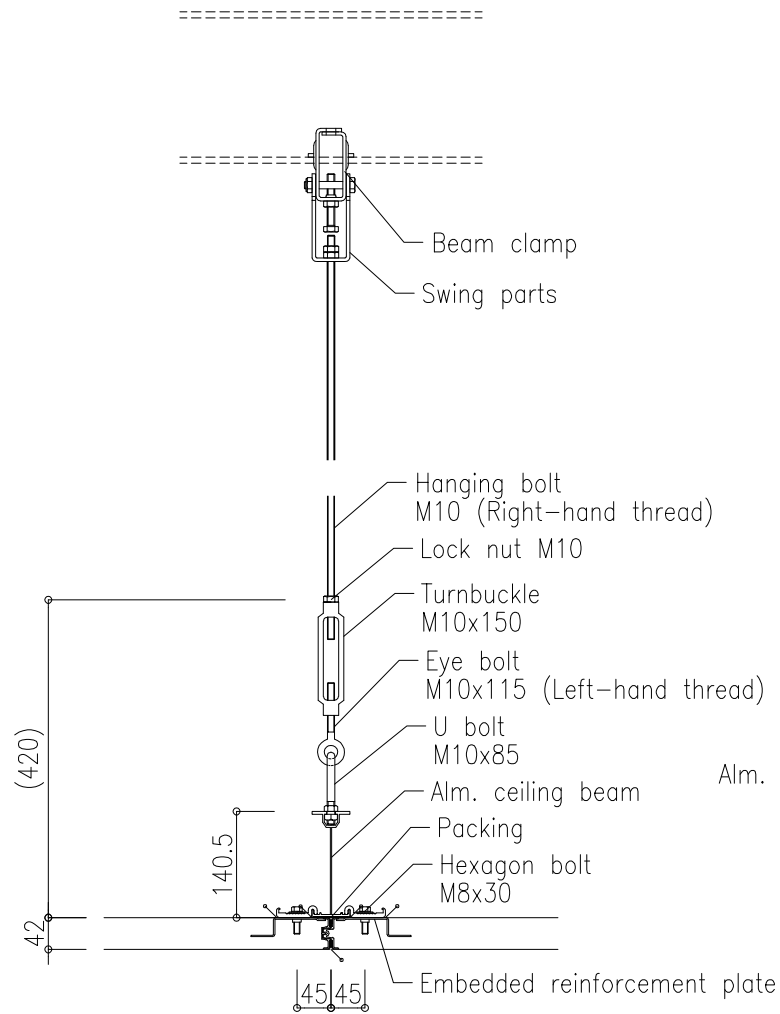
Drawing No.


CR-09




**NIKKEI PANEL SYSTEM VIETNAM Co., Ltd.**

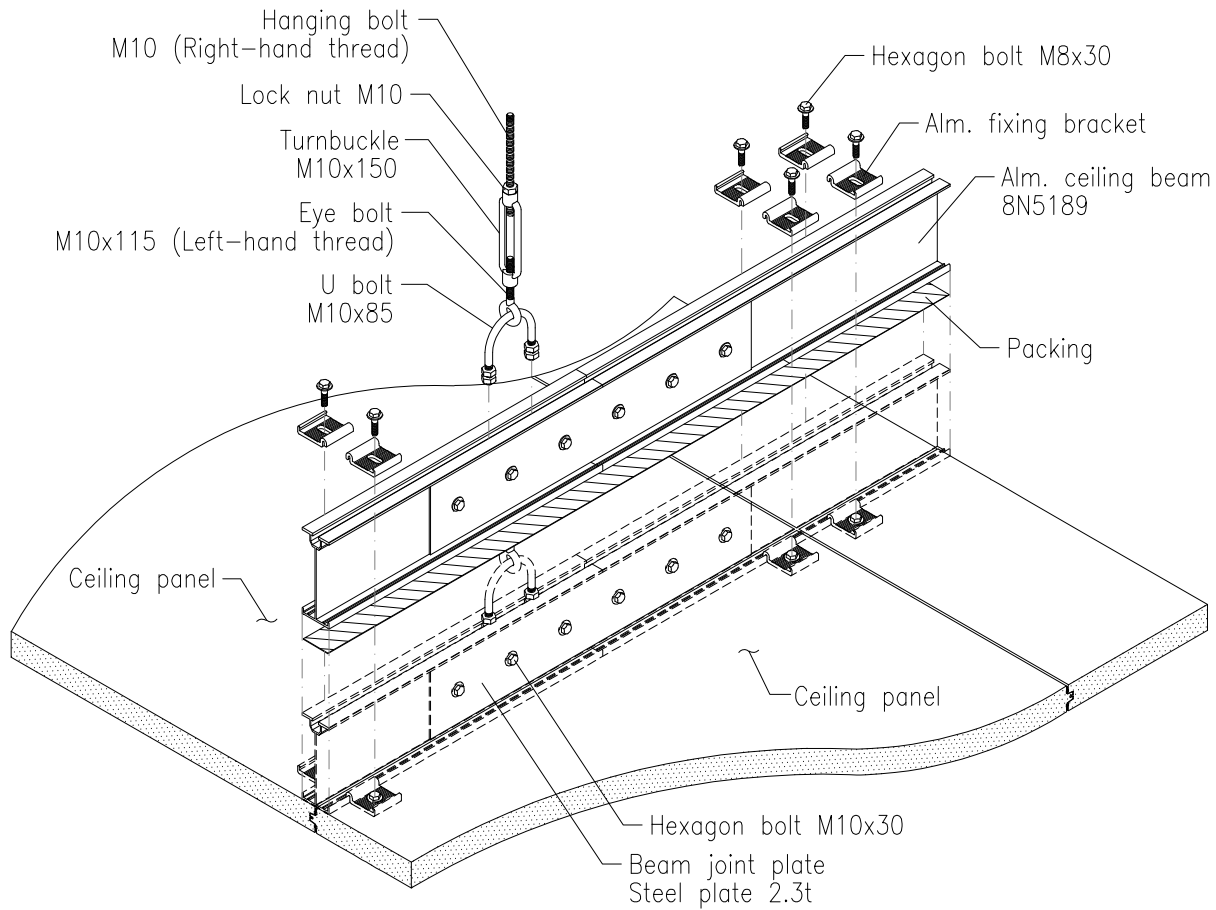
# Ceiling panel hanging system (Upright reinforcement)



 This mark indicates sealing

<b>Drawing title</b> Ceiling panel hanging system (Upright reinforcement)	<b>Scale</b> A4-1/10	<b>Drawing No.</b> <b>CR-10</b>
 <b>NIKKAI PANEL SYSTEM VIETNAM Co., Ltd.</b>		

## Ceiling reinforcement detail (Upright reinforcement)



### Notice

Please adjust the ducts and piping above the ceiling so that they don't interfere with the hanging bolts.

You can walk on the ceiling for inspection.  
However, please protect the places that you pass frequently.

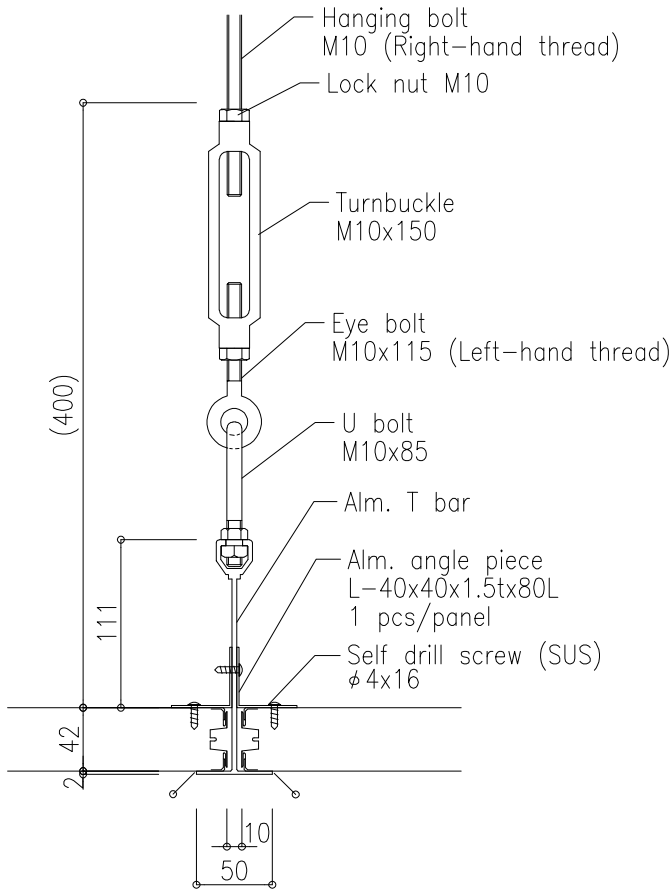
The ceiling panel may be deformed.

Also, please don't apply concentrated load.

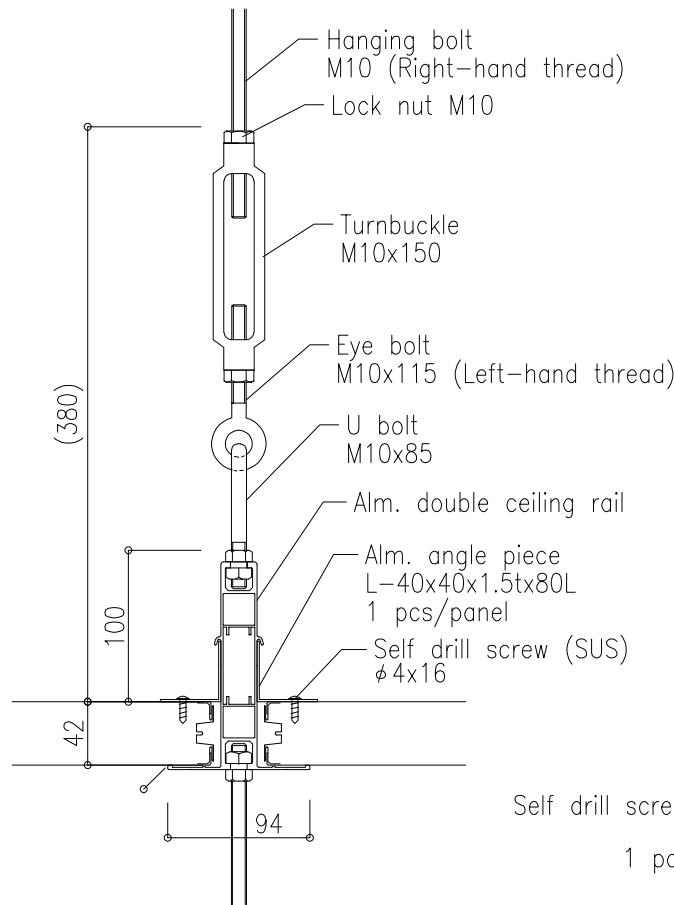
(Cannot be used as a scaffold for construction)

<b>Drawing title</b> Ceiling reinforcement detail (Upright reinforcement)	<b>Scale</b> A4-1/10	<b>Drawing No.</b> <b>CR-11</b>
 <b>NIKKEI PANEL SYSTEM VIETNAM Co., Ltd.</b>		

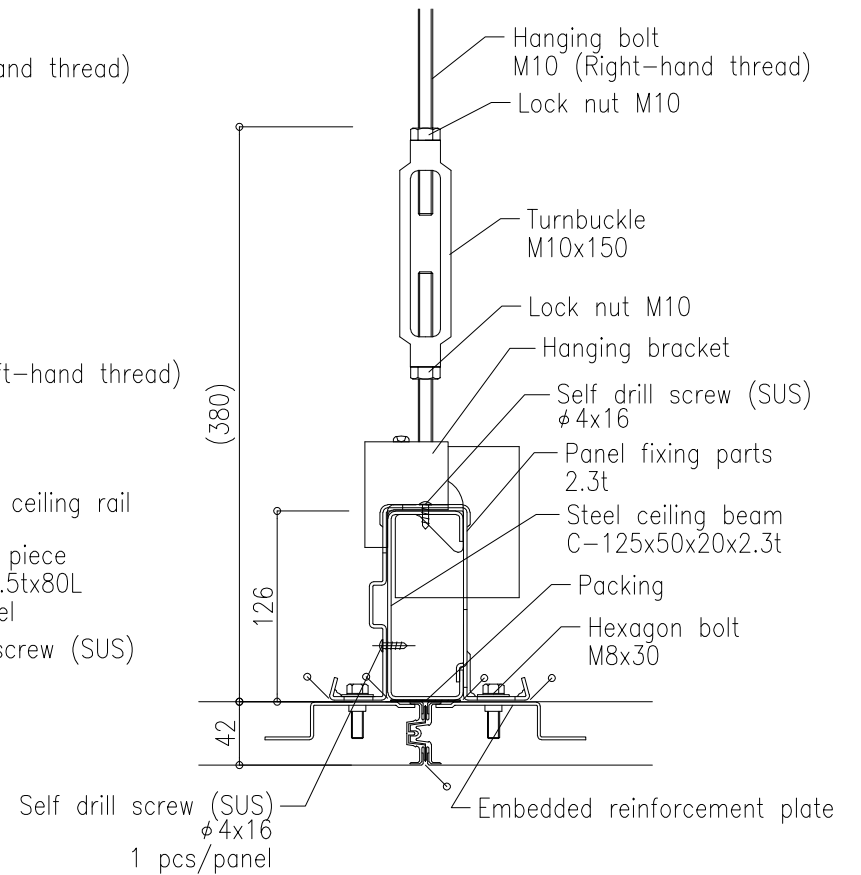
# Ceiling reinforcement other types (1)



Alm. T bar type




Double ceiling rail type

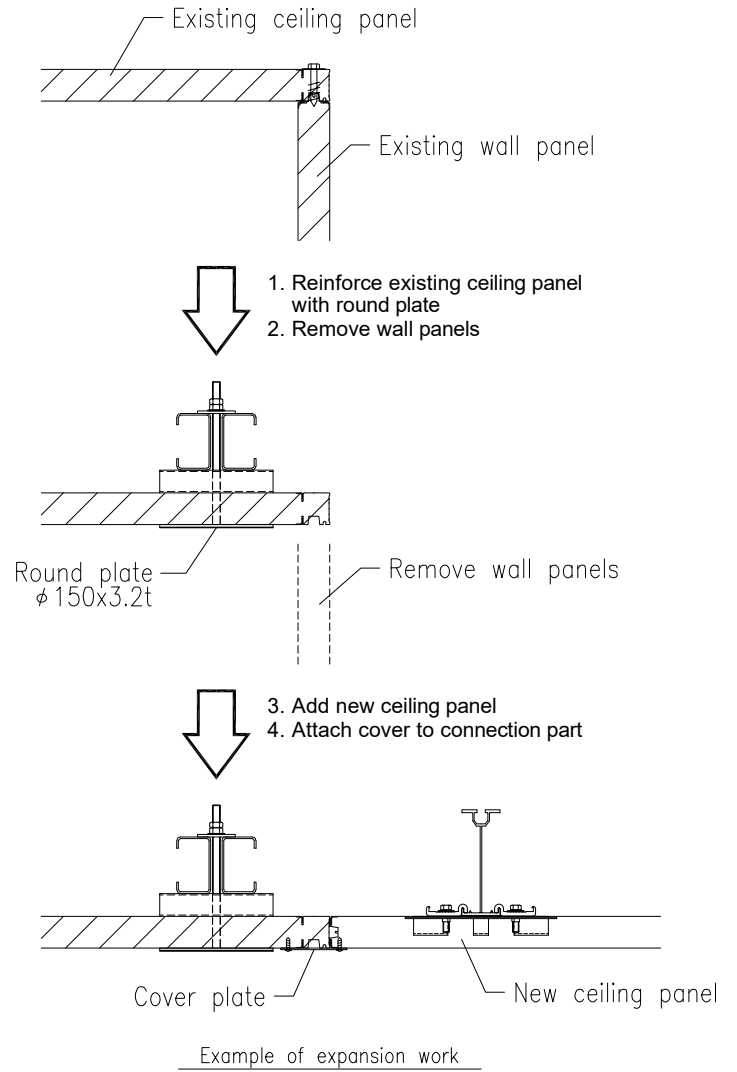
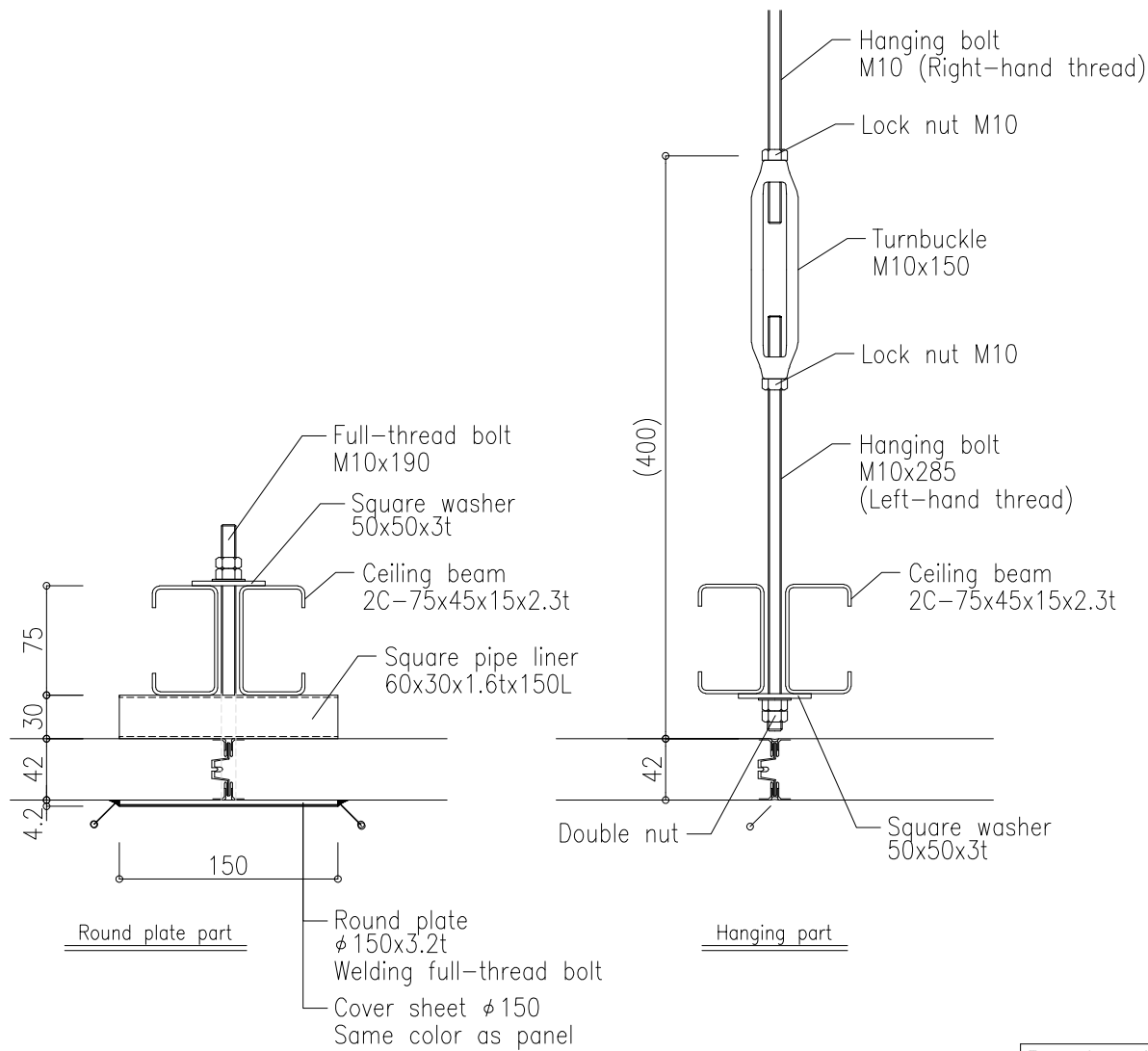



Steel beam type

This mark indicates sealing

<b>Drawing title</b> Ceiling reinforcement other types (1)	<b>Scale</b> A4-1/5	<b>Drawing No.</b> <b>CR-12</b>
 <b>NIKKEI PANEL SYSTEM VIETNAM Co., Ltd.</b>		

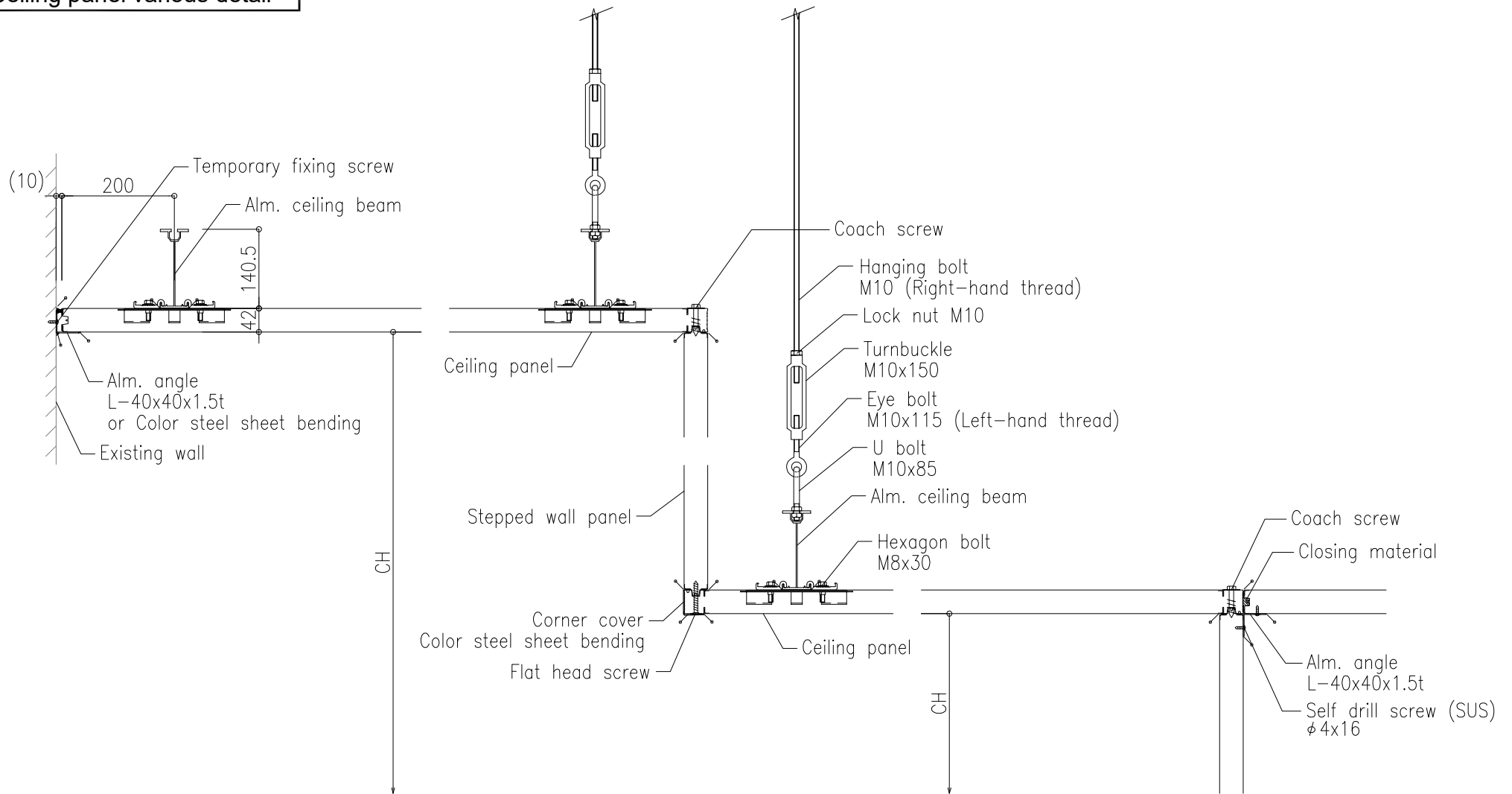
# Ceiling reinforcement other types (2)




 This mark indicates sealing

<b>Drawing title</b> Ceiling reinforcement other types (2)	<b>Scale</b> A4-1/5	<b>Drawing No.</b> <b>CR-13</b>
<b>NIKKEI PANEL SYSTEM VIETNAM Co., Ltd.</b>		

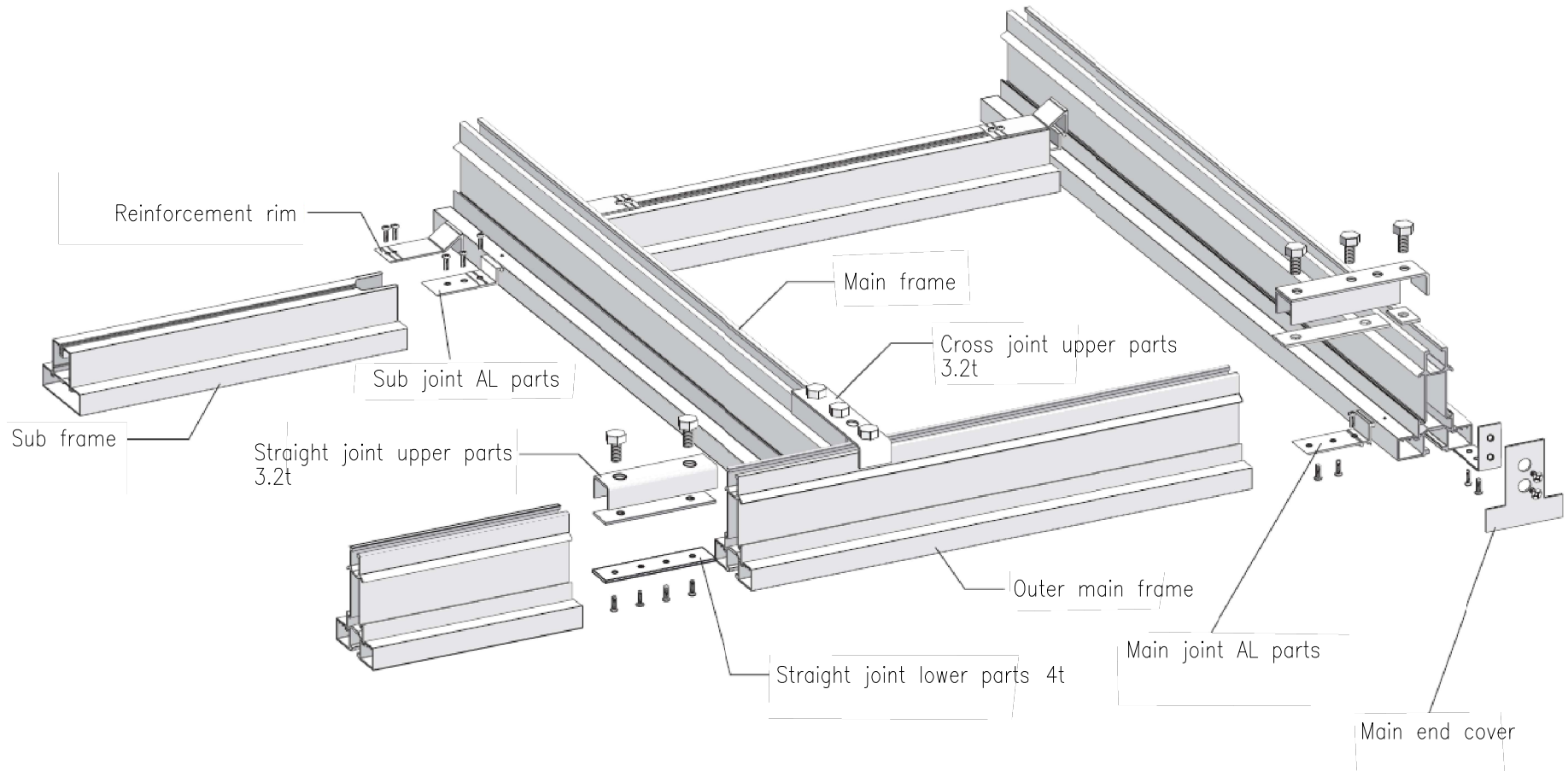
Ceiling panel various detail




 This mark indicates sealing

Drawing title	Scale	Drawing No.
Ceiling panel various detail	A4-1/10	CR-14
 <b>NIKKEI PANEL SYSTEM VIETNAM Co., Ltd.</b>		

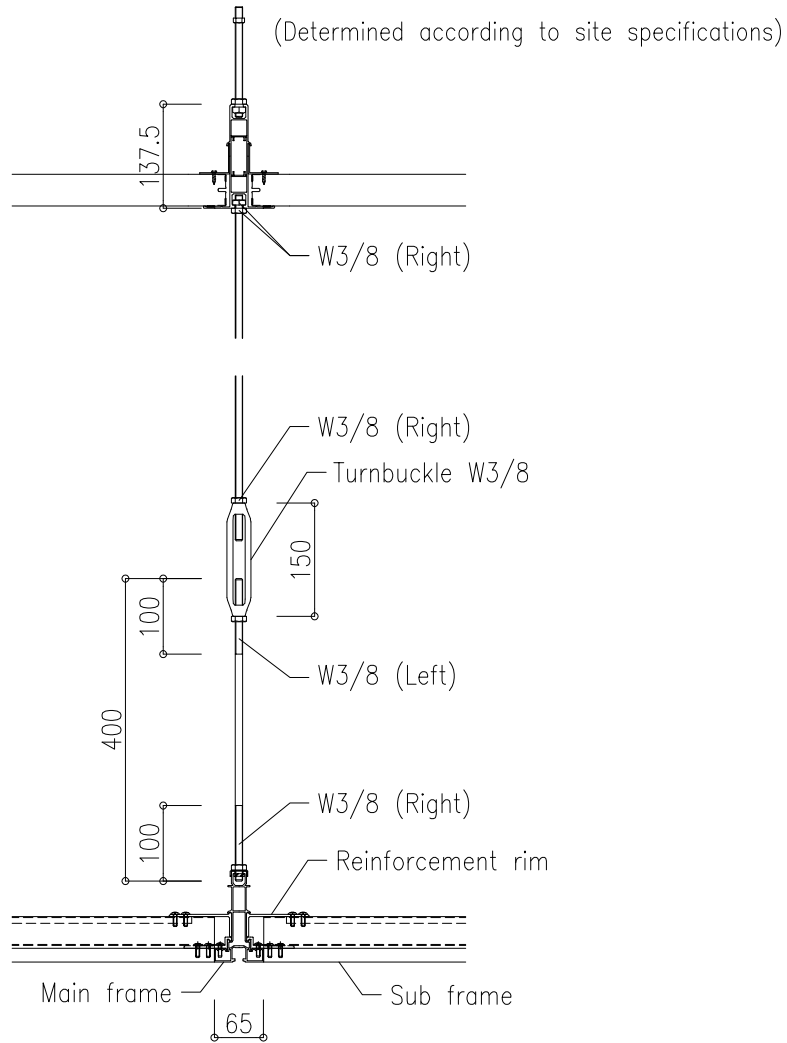
Alm. system ceiling overview figure (NS65)



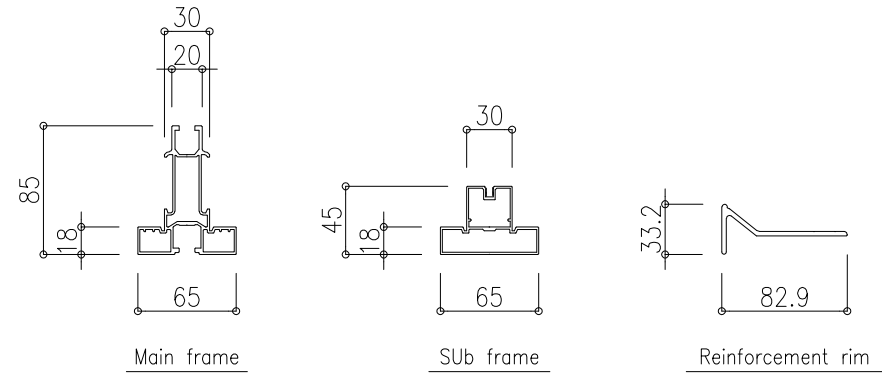
Drawing title	Scale	Drawing No.
Alm. system ceiling overview figure (NS65)	non scale	CR-15
 <b>NIKKI PANEL SYSTEM VIETNAM Co., Ltd.</b>		



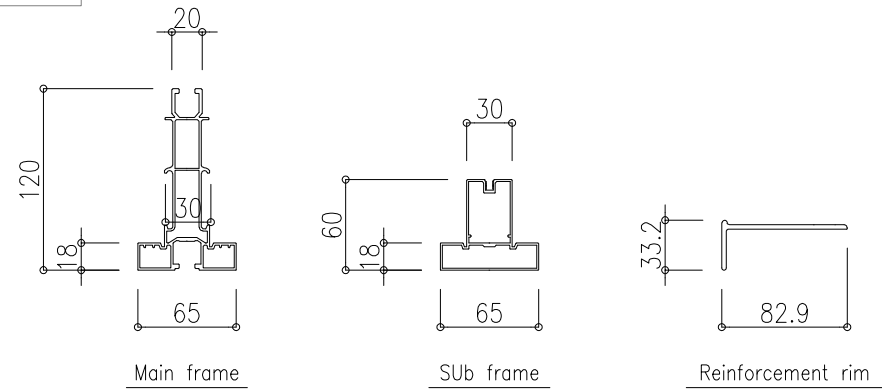
Alm. system ceiling lineup




NS65

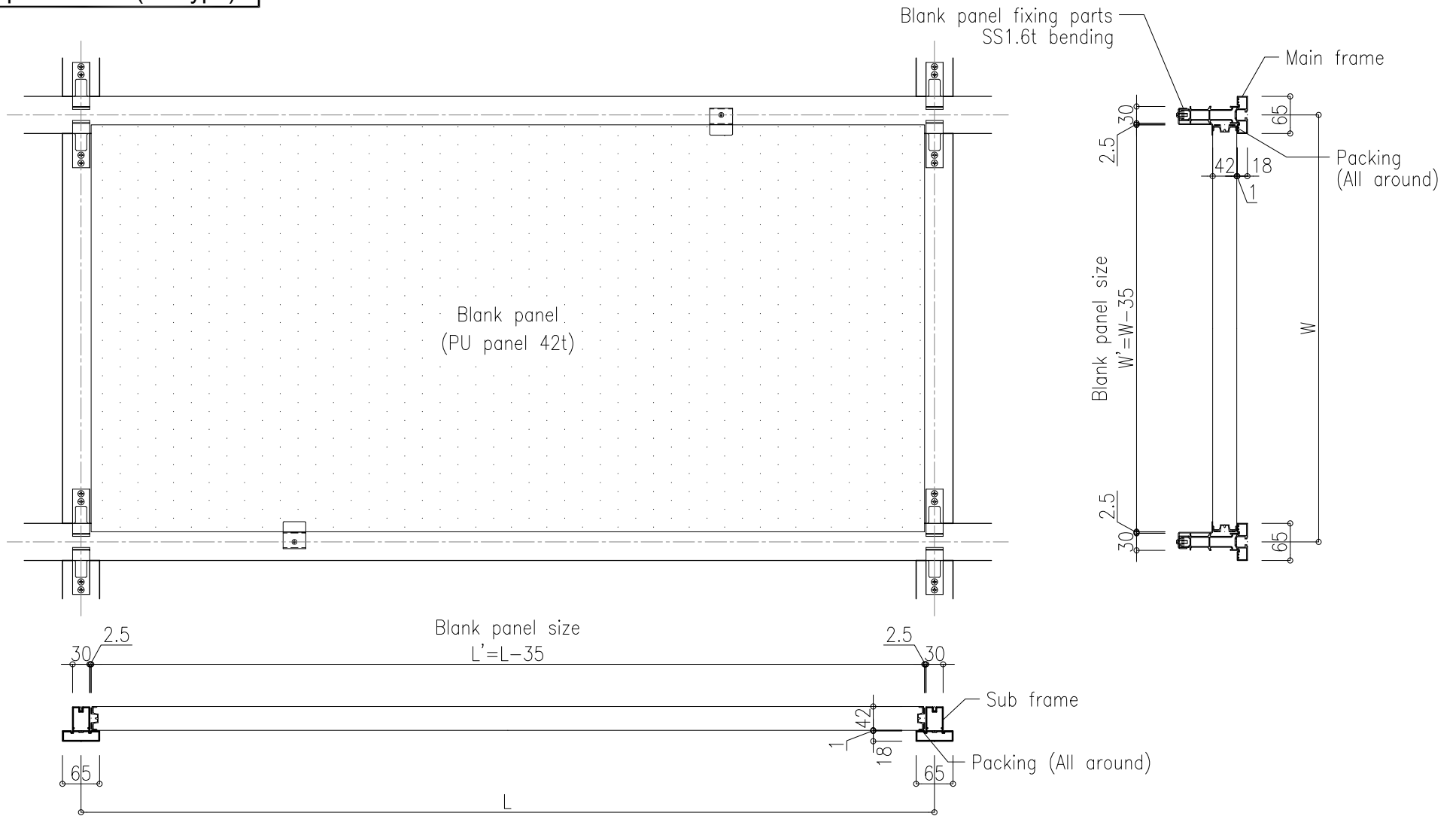



NS65H



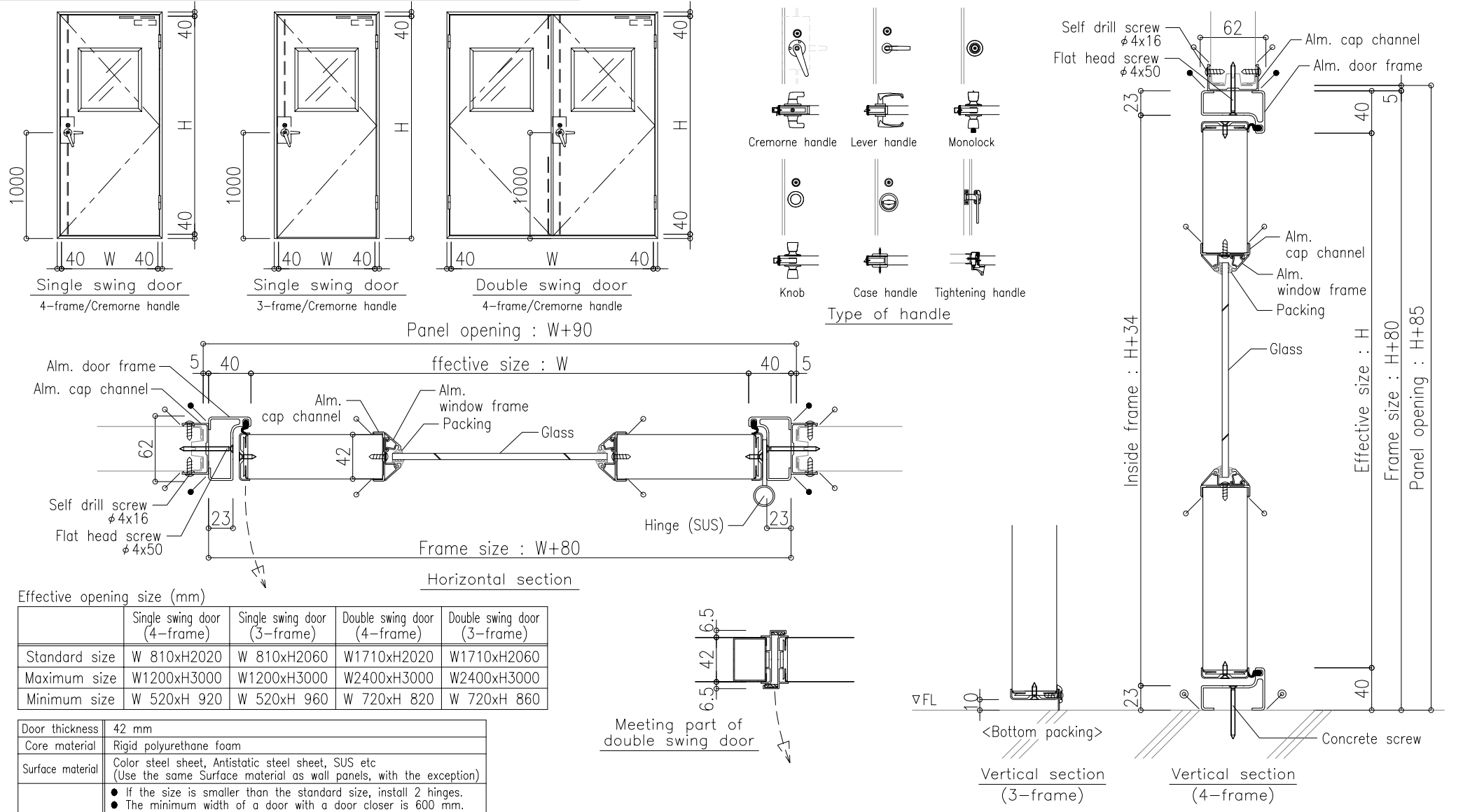
Drawing title	Scale	Drawing No.
Alm. system ceiling lineup	A4-1/5	CR-16
 <b>NIKKEI PANEL SYSTEM VIETNAM Co., Ltd.</b>		

Blank panel detail (42t type)



Drawing title	Scale	Drawing No.
Blank panel detail (42t type)	A4-1/10	CR-17
 <b>NIKKAI PANEL SYSTEM VIETNAM Co., Ltd.</b>		

# CR door detail (Alm. frame, single swing & double swing)



Effective opening size (mm)

	Single swing door (4-frame)	Single swing door (3-frame)	Double swing door (4-frame)	Double swing door (3-frame)
Standard size	W 810xH2020	W 810xH2060	W1710xH2020	W1710xH2060
Maximum size	W1200xH3000	W1200xH3000	W2400xH3000	W2400xH3000
Minimum size	W 520xH 920	W 520xH 960	W 720xH 820	W 720xH 860

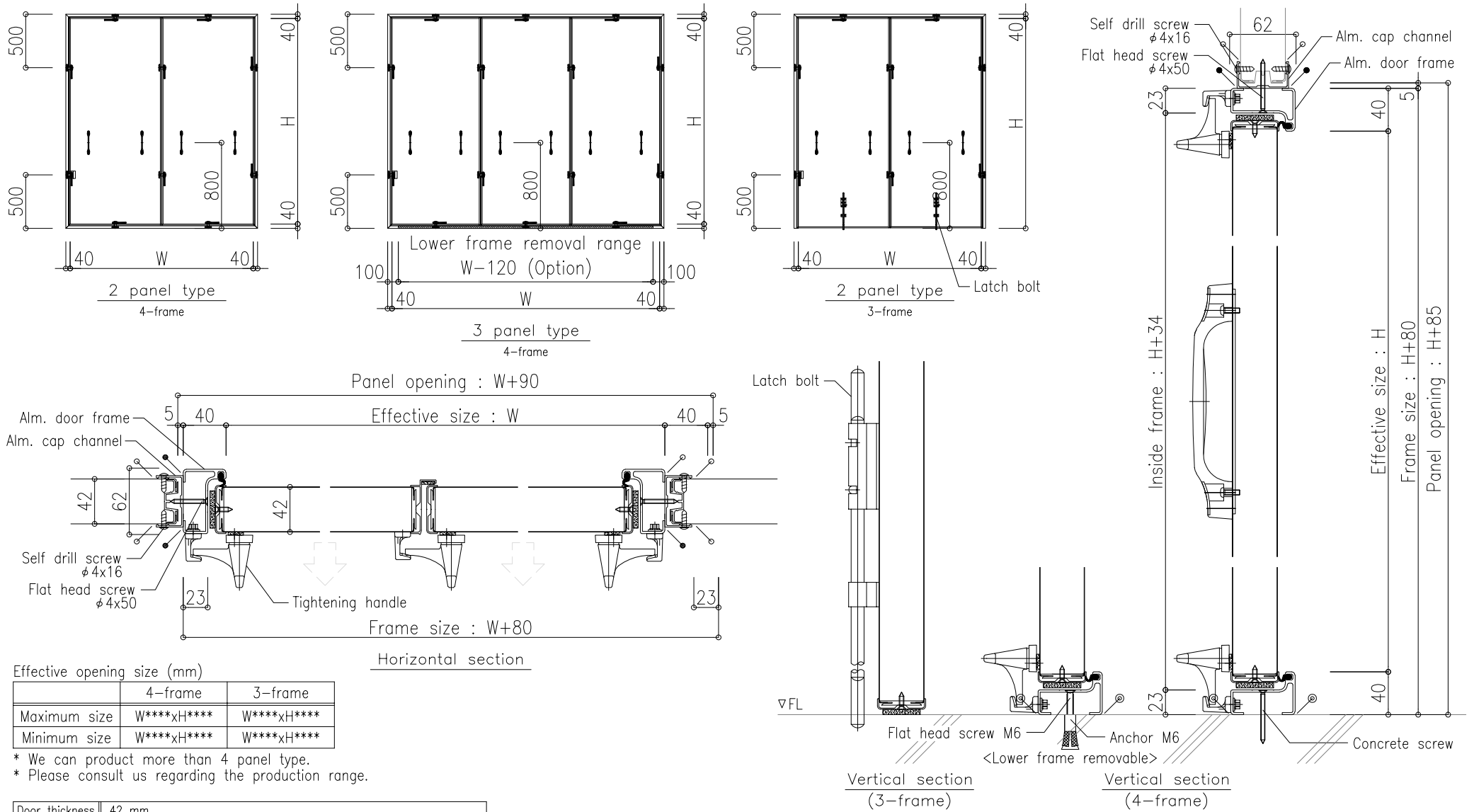
Door thickness	42 mm
Core material	Rigid polyurethane foam
Surface material	Color steel sheet, Antistatic steel sheet, SUS etc (Use the same Surface material as wall panels, with the exception)
Remarks	<ul style="list-style-type: none"> <li>● If the size is smaller than the standard size, install 2 hinges.</li> <li>● The minimum width of a door with a door closer is 600 mm.</li> <li>● For low height doors, the handle height is less than 1000mm.</li> <li>● The size and position of the window may be limited by the W and H dimensions of the door.</li> <li>● If <math>W &gt; H</math>, it's limited to <math>W : H = 1.5 : 1</math>.</li> <li>● If the effective W is wide, a joint line is inserted in the center of the door to connect the two surface materials.</li> <li>● It's possible to install an electric lock.</li> </ul>

Legend

- ... Sealing (Panel color)
- ... Sealing (Light gray color)
- ... Sealing with the floor requires consultation

<b>Drawing title</b> CR door detail (Alm. frame, single swing & double swing)	<b>Scale</b> A4-1/5	<b>Drawing No.</b> <b>CR-18</b>
<b>NIKKEI PANEL SYSTEM VIETNAM Co., Ltd.</b>		

# CR door detail (Alm. frame, removable panel)




Effective opening size (mm)

	4-frame	3-frame
Maximum size	W****xH****	W****xH****
Minimum size	W****xH****	W****xH****

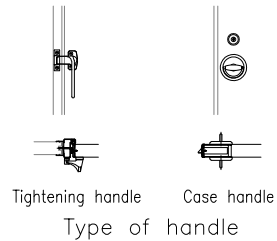
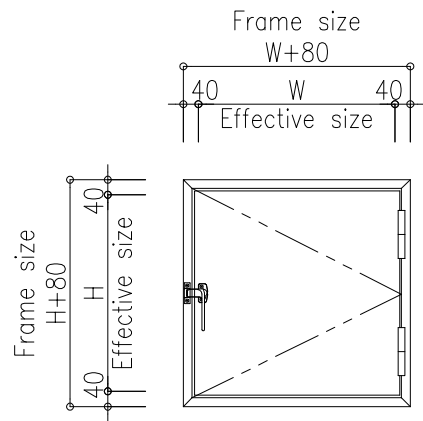
\* We can product more than 4 panel type.  
 \* Please consult us regarding the production range.

Door thickness	42 mm
Core material	Rigid polyurethane foam
Surface material	Color steel sheet, Antistatic steel sheet, SUS etc (Use the same Surface material as wall panels, with the exception)
Remarks	● The lower frame of the 4-frame type can be removable.

- Legend
- ... Sealing (Panel color)
  - ... Sealing (Light gray color)
  - ⊙ ... Sealing with the floor requires consultation

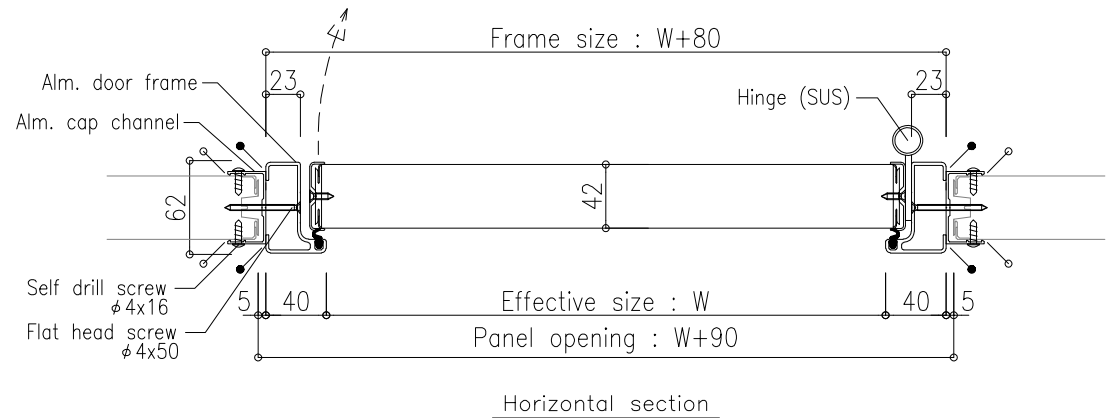
<b>Drawing title</b> CR door detail (Alm. frame, removable panel)	<b>Scale</b> A4-1/5	<b>Drawing No.</b> <b>CR-19</b>
 <b>NIKKEI PANEL SYSTEM VIETNAM Co., Ltd.</b>		

# CR door detail (Alm. frame, inspection door)



Effective opening size (mm)

Standard size	W 520xH 520
Maximum size	W1200xH 920
Minimum size (For case handle)	W 270xH 320 (W 370xH 320)




When installing on the ceiling

Basically, it's installed so that it opens to the back of the ceiling.

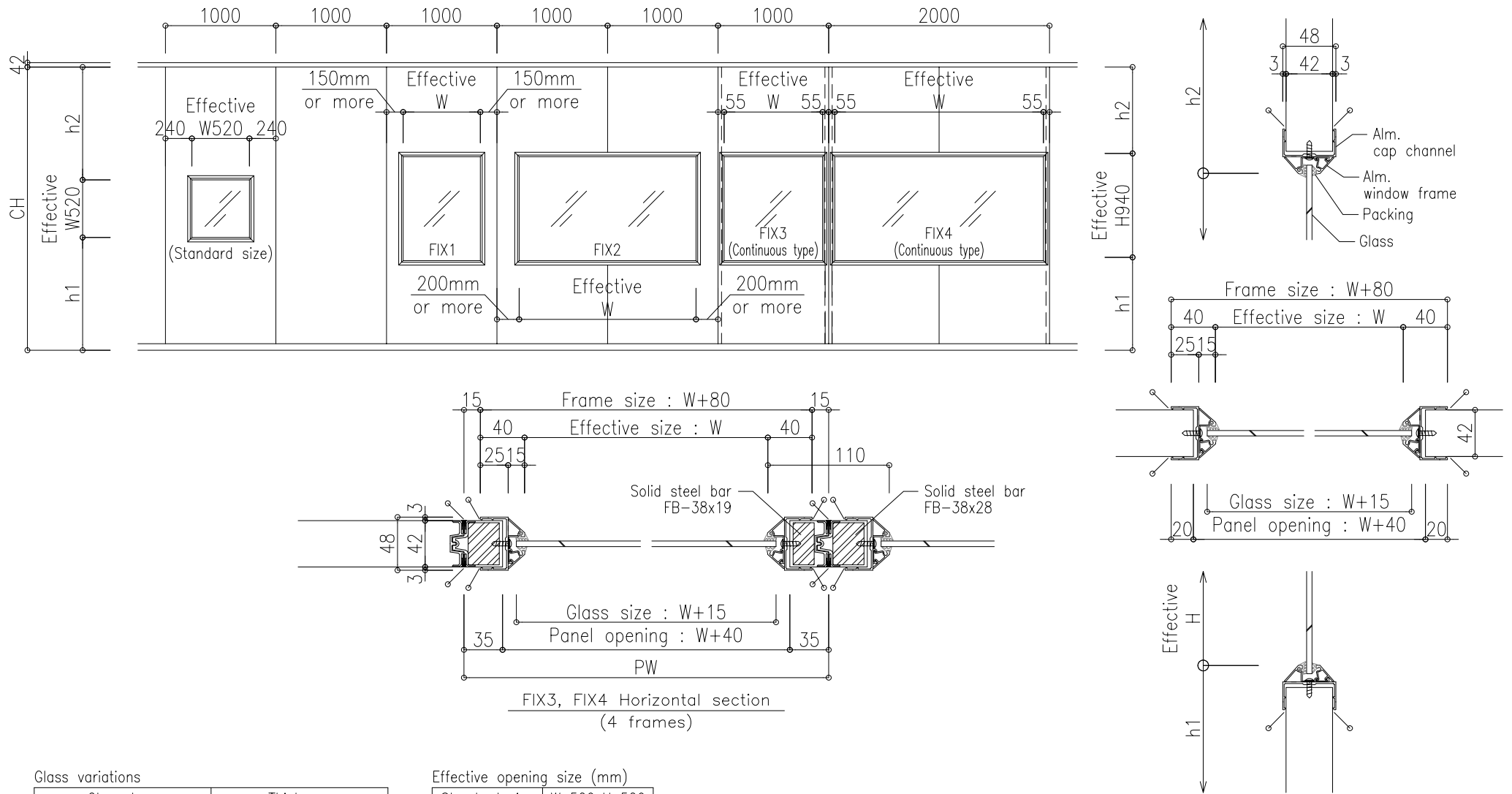
Do not ride on the inspection door.  
An accident may occur due to the product falling over or falling.  
In addition, the product may be damaged.

Legend

	Sealing (Panel color)
	Sealing (Light gray color)

<b>Drawing title</b> CR door detail (Alm. frame, inspection door)	<b>Scale</b> A4-1/5	<b>Drawing No.</b> <b>CR-20</b>
 <b>NIKKEI PANEL SYSTEM VIETNAM Co., Ltd.</b>		

# Window detail (Alm. frame)



### Glass variations

Glass type	Thickness
Transparent float glass	(3.0t) 4.0t, 5.0t, 6.0t
Tempered glass	(3.0t) 4.0t, 5.0t, 6.0t
Laminated glass	6.38t (3+0.38+3)

\* Combination with various films is also possible.  
 \* For other types, please contact us.

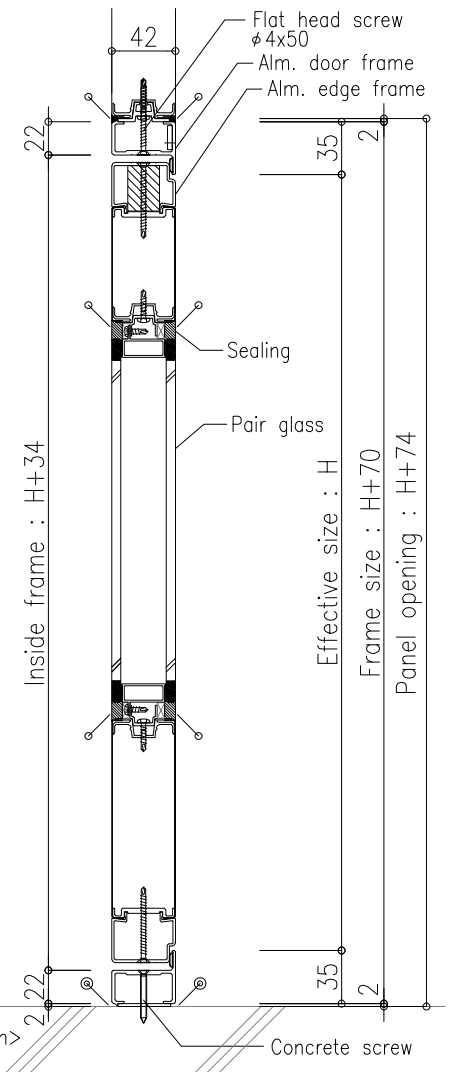
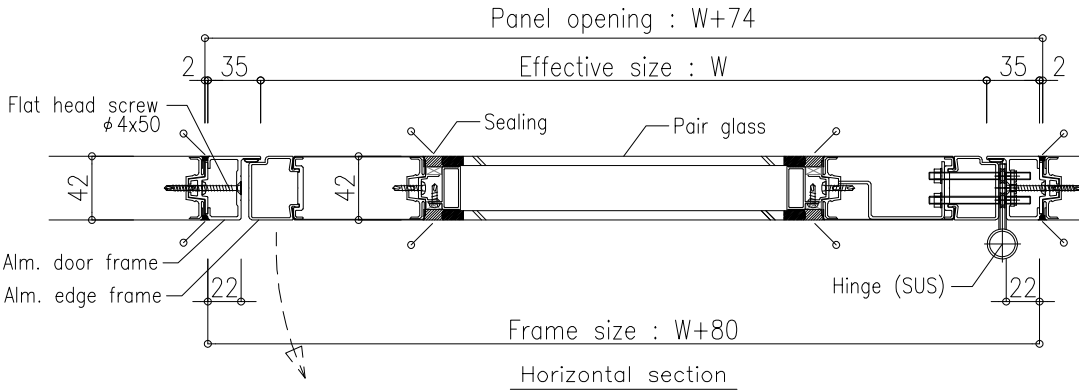
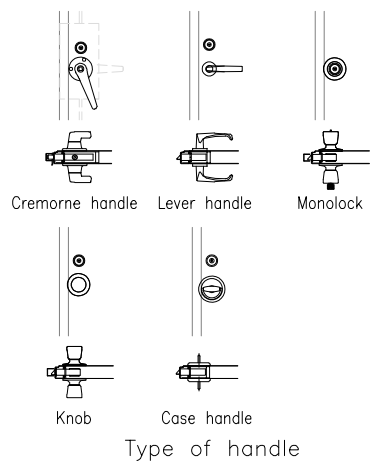
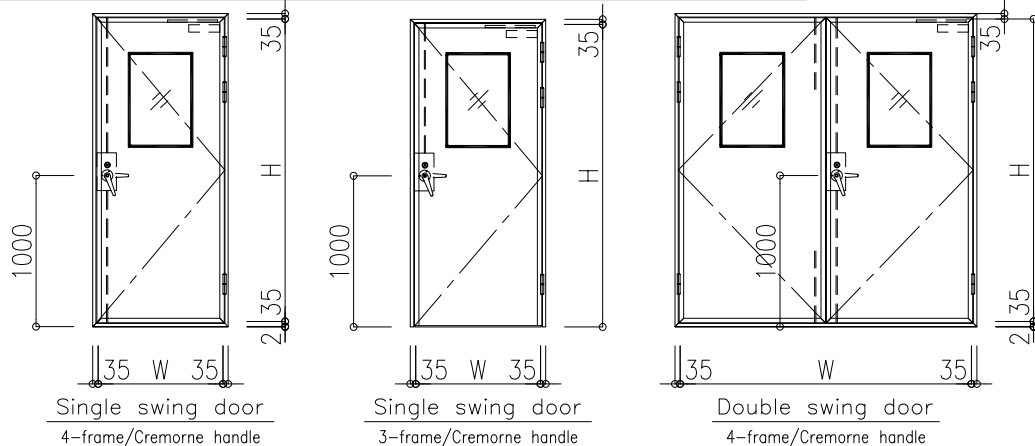
### Effective opening size (mm)

Standard size	W 520xH 520
Maximum size	W****xH****
Minimum size	W ***xH ***

Legend  
 ... Sealing (Panel color)

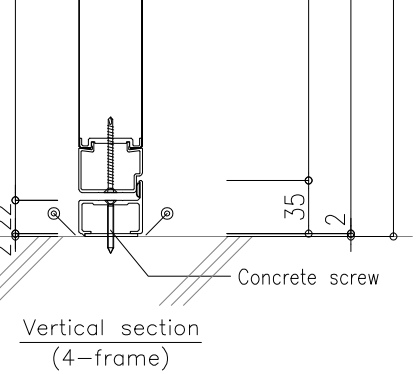
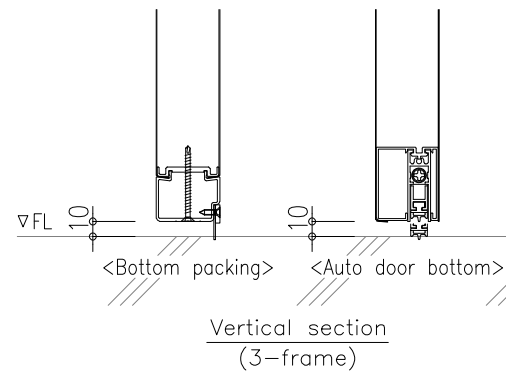
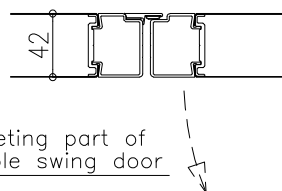
<b>Drawing title</b> Window detail (Alm. frame)	<b>Scale</b> A4-1/5	<b>Drawing No.</b> <b>CR-21</b>
<b>NIKKEI PANEL SYSTEM VIETNAM Co., Ltd.</b>		

# Flat door detail (Alm. frame, single swing & double swing)



Effective opening size (mm)

	Single swing door (4-frame / 3-frame)	Double swing door (4-frame / 3-frame)
Standard size	W 826xH2000	W1926xH2000
Maximum size	W1200xH2500	W2400xH2500
Minimum size	W 600xH 900	W 800xH 900



Door thickness	42 mm
Core material	Rigid polyurethane foam
Surface material	Color steel sheet, Antistatic steel sheet, SUS etc (Use the same Surface material as wall panels, with the exception)
Remarks	<ul style="list-style-type: none"> <li>The minimum width of a door with a door closer is 600 mm.</li> <li>For low height doors, the handle height is less than 1000mm.</li> <li>The size and position of the window may be limited by the W and H dimensions of the door.</li> <li>If <math>W &gt; H</math>, it's limited to <math>W : H = 1.5 : 1</math>.</li> <li>If the effective W is wide, a joint line is inserted in the center of the door to connect the two surface materials.</li> <li>It's possible to install an electric lock.</li> </ul>

Legend

- ... Sealing (Panel color)
- ... Sealing (Light gray color)
- ⊙ ... Sealing with the floor requires consultation

<b>Drawing title</b> Flat door detail (Alm. frame, single swing & double swing)	<b>Scale</b> A4-1/5	<b>Drawing No.</b> CR-22







